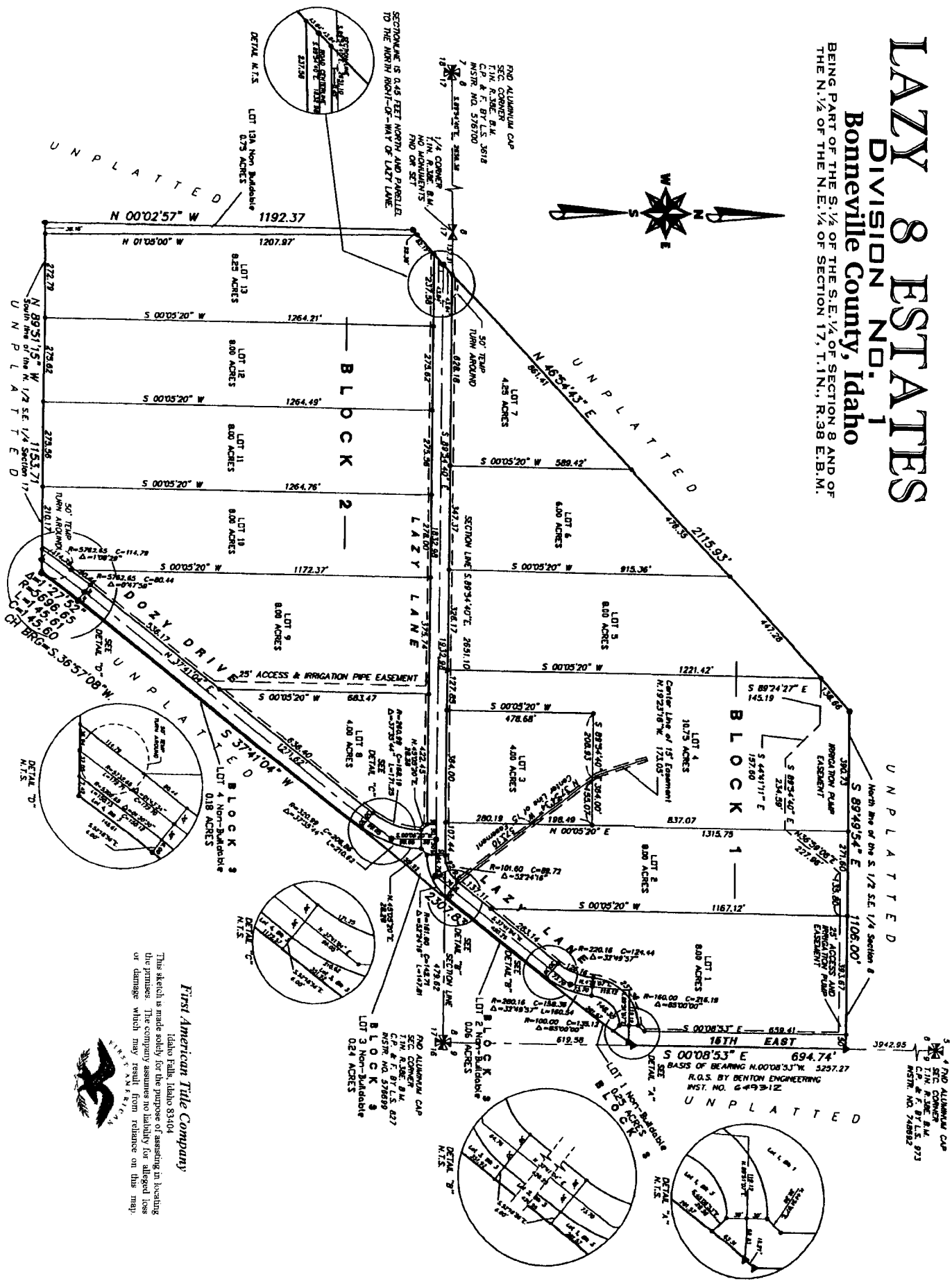


LAZY 8 ESTATES

DIVISION NO. 1

Bonneville County, Idaho

BEING PART OF THE S. 1/2 OF THE S.E. 1/4 OF SECTION 8 AND OF THE N. 1/2 OF THE N.E. 1/4 OF SECTION 17, T.1N., R.38 E.B.M.



This sketch is made solely for the purpose of assisting in locating the premises. The company assumes no liability for alleged loss or damage which may result from reliance on this map.

First American Title Company

Idaho Falls, Idaho 83404

