

LAZY 8 ESTATES

DIVISION NO. 2

BONNEVILLE COUNTY, IDAHO
 BEING PART OF THE SOUTH 1/2 OF THE NORTHEAST 1/4, THE NORTHWEST 1/4 OF THE SOUTHEAST 1/4
 AND THE EAST 1/2 OF THE SOUTHWEST 1/4 OF SECTION 17, T.1N., R.30E., B.1M.

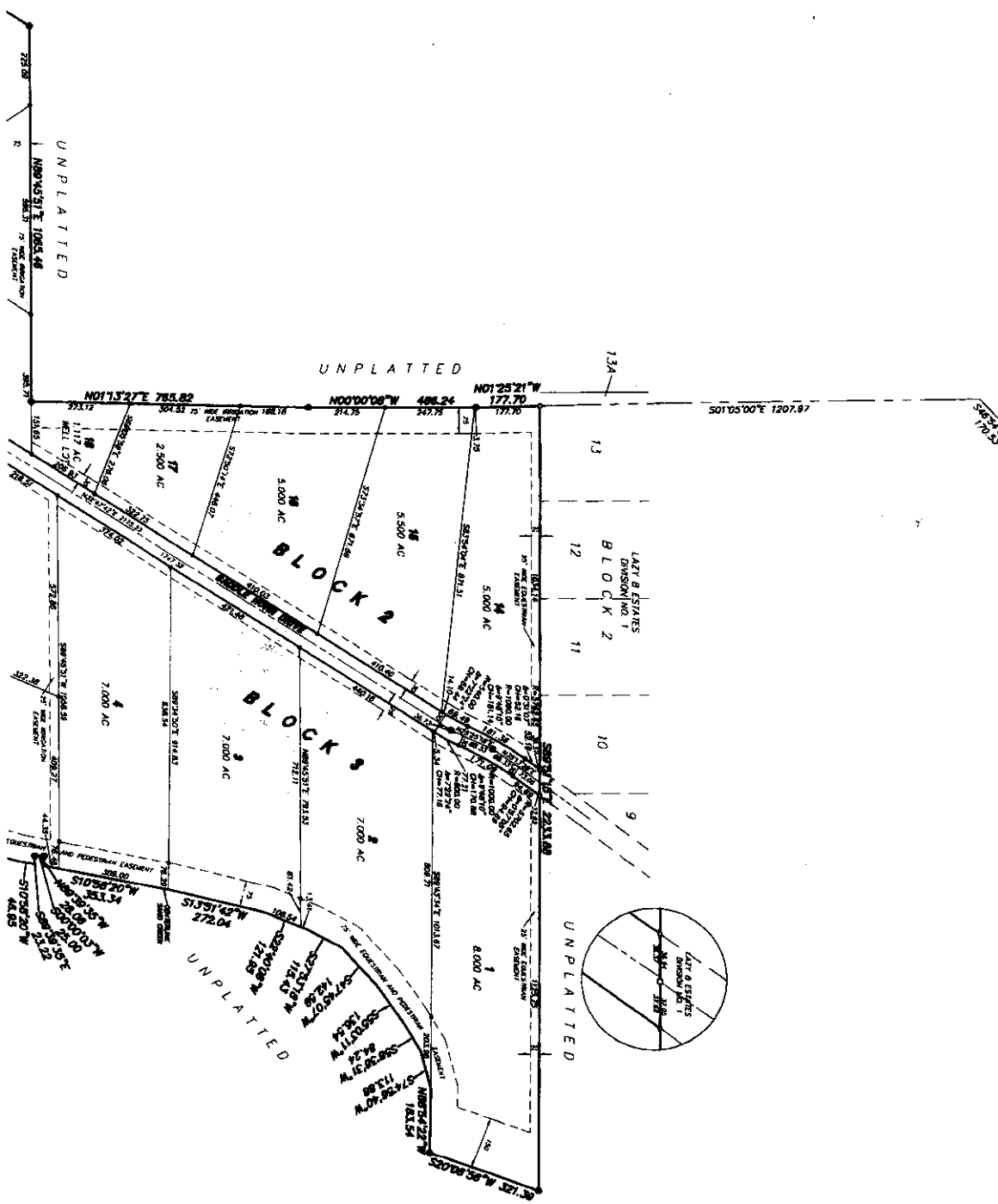
FOUND ALUMINUM CAP
 N.E. COR. SECTION 17
 T.1N., R.30E., B.1M.
 DIST. 100 FT. FROM
 N. 1/4 COR. SECTION 17
 N. 1/4 COR. SECTION 17
 N. 1/4 COR. SECTION 17
 N. 1/4 COR. SECTION 17

SECTION 17 (BASE OF BEARING)
 LAZY 8 ESTATES, DIVISION NO. 1
 AREA 407.43 AC. (11.11)

2797.79

2513.82

FOUND ALUMINUM CAP
 N.E. COR. SECTION 17
 T.1N., R.30E., B.1M.
 DIST. 100 FT. FROM
 N. 1/4 COR. SECTION 17
 N. 1/4 COR. SECTION 17
 N. 1/4 COR. SECTION 17



First American Title Company
 Idaho Falls, Id 83404
 While this is a photographic
 reproduction of the recorded
 plat, the company assumes
 no liability for variations,
 if any, with a re-survey.