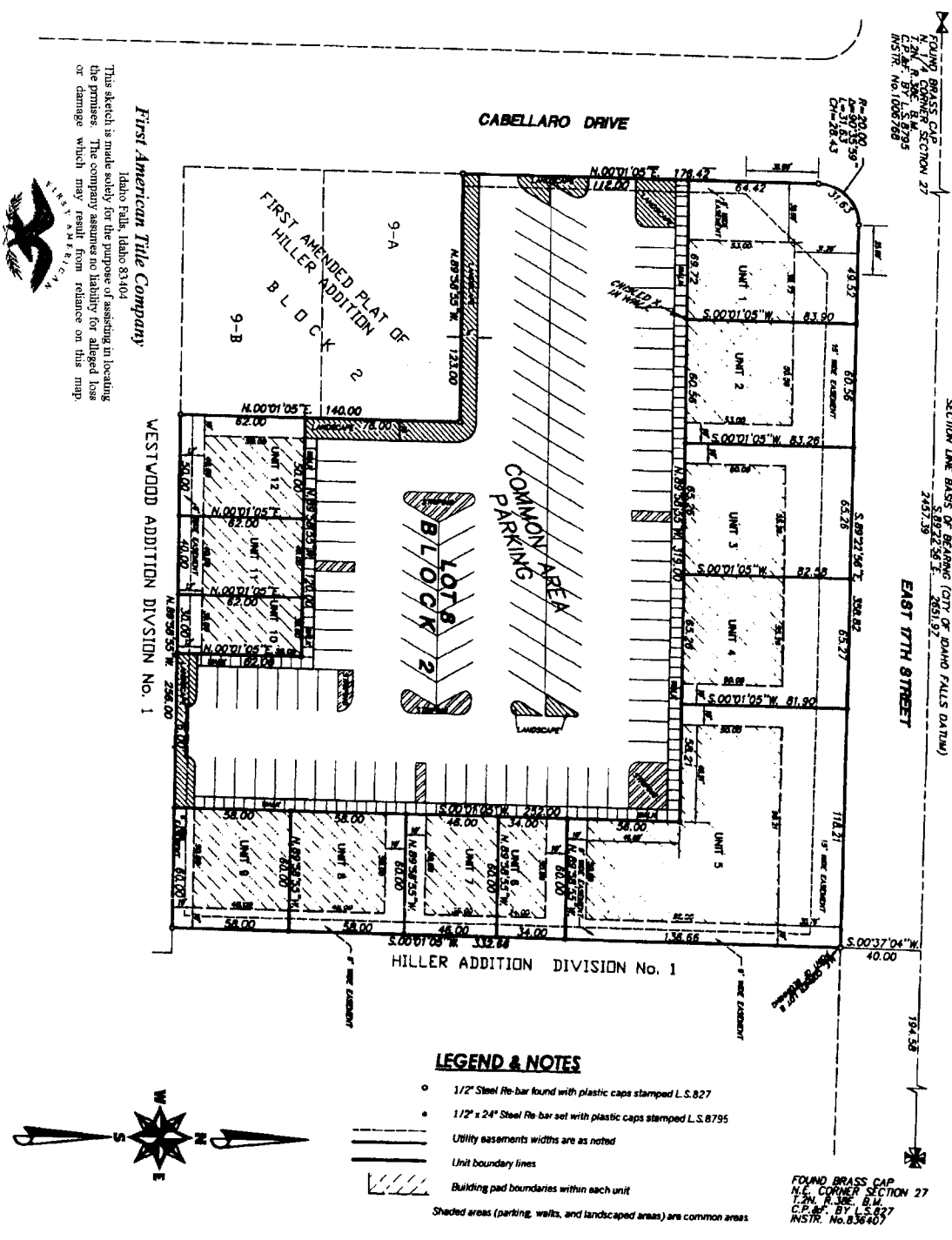


# LEGACY PROFESSIONAL PARK

PURSUANT TO IDAHO CODE, TITLE 55, CHAPTER 15  
CITY OF AMMON, BONNEVILLE COUNTY, IDAHO



**First American Title Company**  
 Idaho Falls, Idaho 83404

This sketch is made solely for the purpose of assisting in locating the premises. The company assumes no liability for alleged loss or damage which may result from reliance on this map.



### LEGEND & NOTES

- 1/2" Steel Re-bar found with plastic caps stamped L.S.827
  - 1/2" x 24" Steel Re-bar set with plastic caps stamped L.S.8795
  - Utility easements widths are as noted
  - Unit boundary lines
  - ▨ Building pad boundaries within each unit
- Shaded areas (parking, walks, and landscaped areas) are common areas



FOUND BRASS CAP  
 N.E. CORNER SECTION 27  
 T.2N. R.3E. B.M.  
 C.P.M. BY L.S.827  
 INSTR. No. 836407

FOUND BRASS CAP  
 N.E. CORNER SECTION 27  
 T.2N. R.3E. B.M.  
 C.P.M. BY L.S.827  
 INSTR. No. 1008788

SECTION LINE BASIS OF BEARING (CITY OF IDAHO FALLS DATUM)  
 2437.39  
 S.89°22'58"E 2651.97  
 EAST 17TH STREET

WESTWOOD ADDITION DIVISION No. 1

HILLER ADDITION DIVISION No. 1