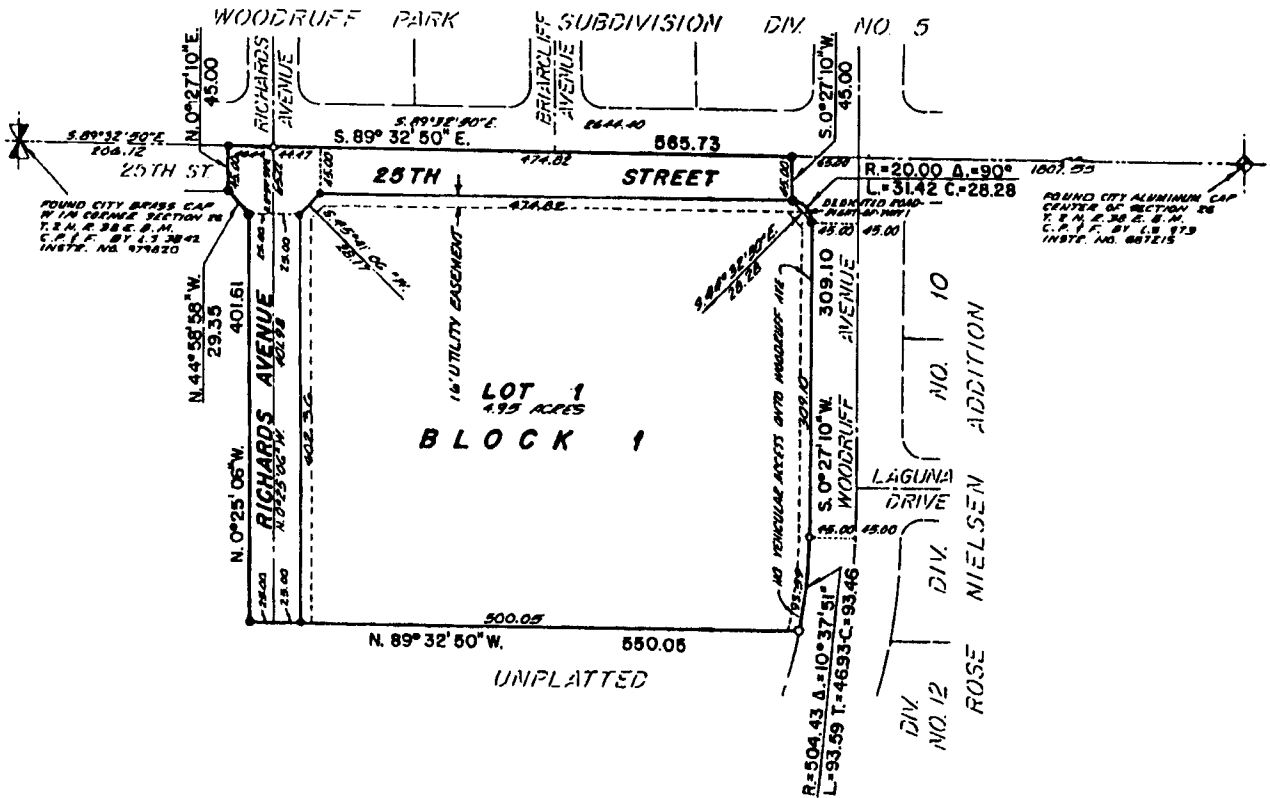


LEGENDS

DIVISION NO. 1

AN ADDITION TO THE CITY OF IDAHO FALLS,
 BONNEVILLE COUNTY, IDAHO
 BEING PART OF THE S.W. 1/4 OF SECTION 28, T. 2 N., R. 38 E., B. M.



LEGEND & NOTES

- 5/8" x 30" Steel Re-bar set with plastic cap stamped L.S.877
- 1/2" x 24" Steel Re-bar set with plastic cap stamped L.S.877
- 5/8" Steel Re-bar found with no cap
- 1/2" Steel Re-bar found with no cap
- △ Aluminum cap found with •

--- Public utility easements are ten feet wide unless otherwise shown.

First American Title Company

Idaho Falls, Idaho 83404

This sketch is made solely for the purpose of assisting in locating the premises. The company assumes no liability for alleged loss or damage which may result from reliance on this map

