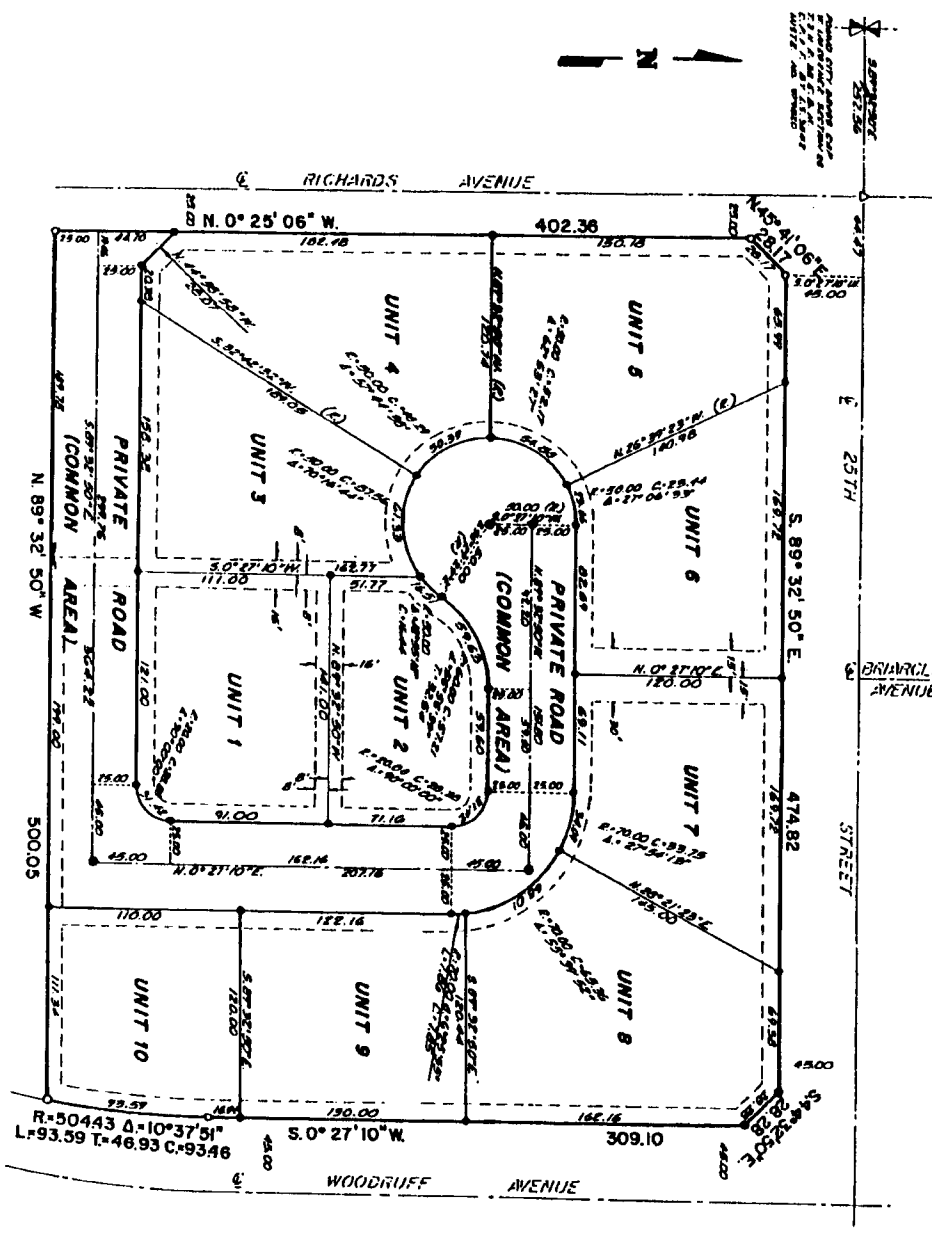


LEGENDS

PURSUANT TO IDAHO CODE, TITLE 35, CHAPTER 15
CITY OF IDAHO FALLS, BONNEVILLE COUNTY, IDAHO



LEGEND & NOTES

- 1/2" Round Rebar set with double end removed (L.S.217)
- 1/2" Round Rebar set with double end removed (L.S.217)
- 1/2" Round Rebar hand with on top
- 1/2" Round Rebar hand with on top
- △ Adornment and hand with

This sketch is made solely for the purpose of assisting in locating the premises. The company assumes no liability for alleged loss or damage which may result from reliance on this map.

First American Title Company
Idaho Falls, Idaho 83404

