

# LINCOLN PARK SUBDIVISION

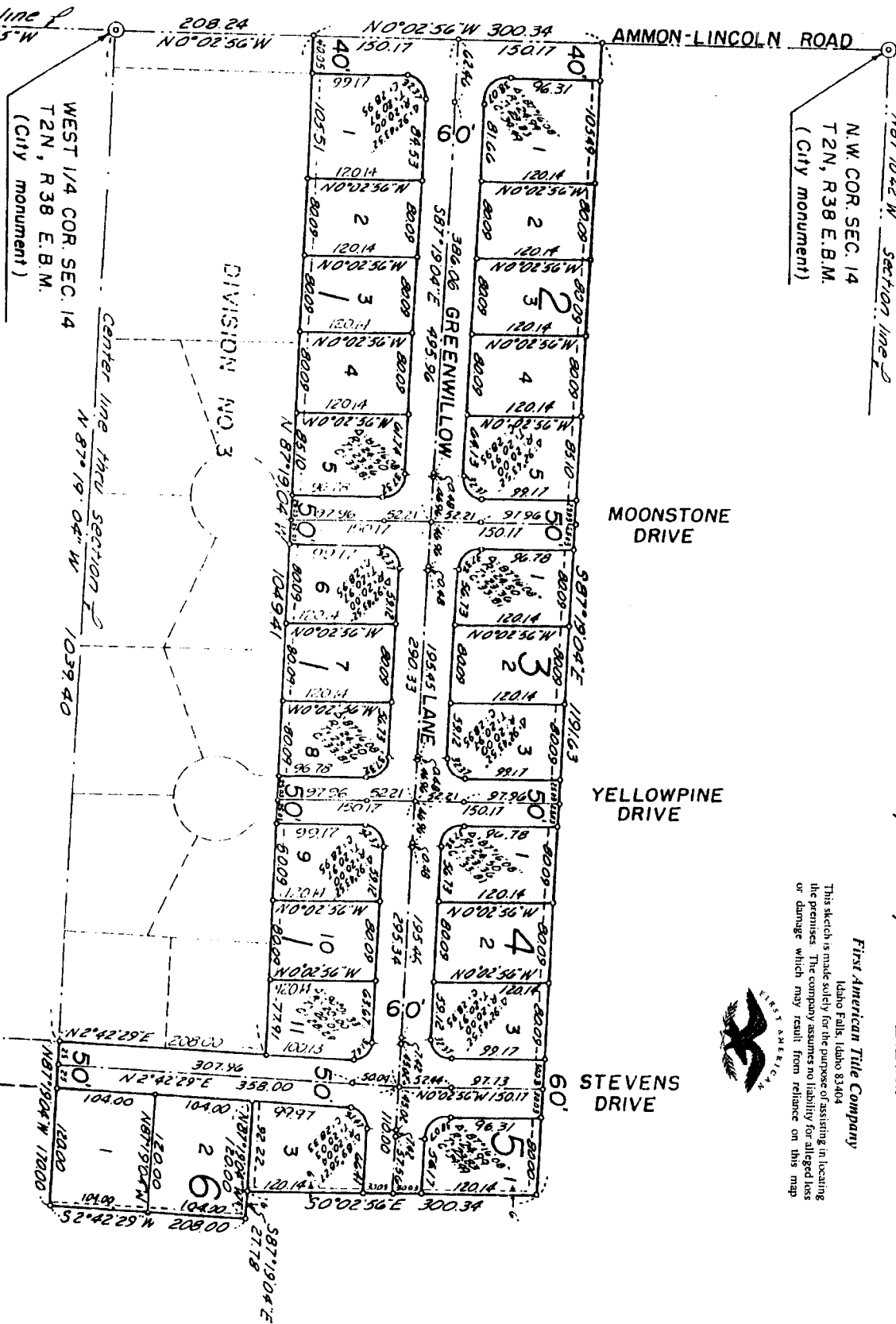
## DIVISION NO. 1

BONNEVILLE COUNTY, IDAHO

PART OF

THE N.W. 1/4 SECTION 14, T2N, R38 E.B.M.

N.W. COR. SEC. 14  
T2N, R38 E.B.M.  
(City monument)



**First American Title Company**  
Idaho Falls, Idaho 83404  
This sketch is made solely for the purpose of assisting in locating the premises. The company assumes no liability for alleged loss or damage which may result from reliance on this map.

