

LINCOLN PARK SUBDIVISION

DIVISION NO. 4

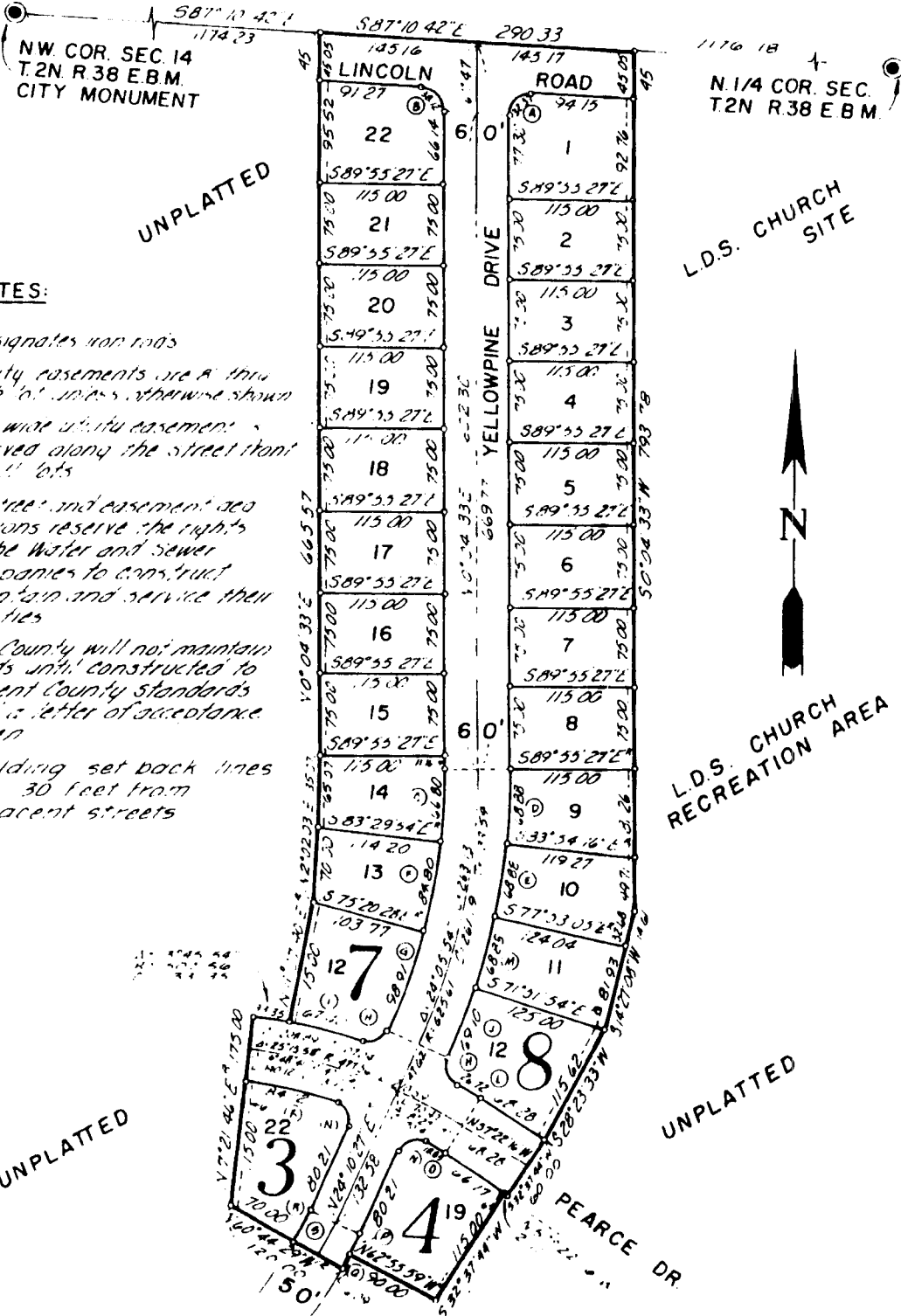
BONNEVILLE COUNTY, IDAHO

Part of the N.W. 1/4 of Section 14 T.2N., R.38 E.B.M.

First American Title Company

Idaho Falls, Idaho 83404

This sketch is made solely for the purpose of assisting in locating the premises. The company assumes no liability for alleged loss or damage which may result from reliance on this map.



NOTES:

- o- designates iron rods
- utility easements are shown each lot unless otherwise shown
- A 10' wide utility easement is reserved along the street front of all lots
- All street and easement dedications reserve the rights to the Water and Sewer Companies to construct, maintain and service their utilities
- The County will not maintain roads until constructed to current County Standards and a letter of acceptance given
- Building set back lines are 30 feet from adjacent streets