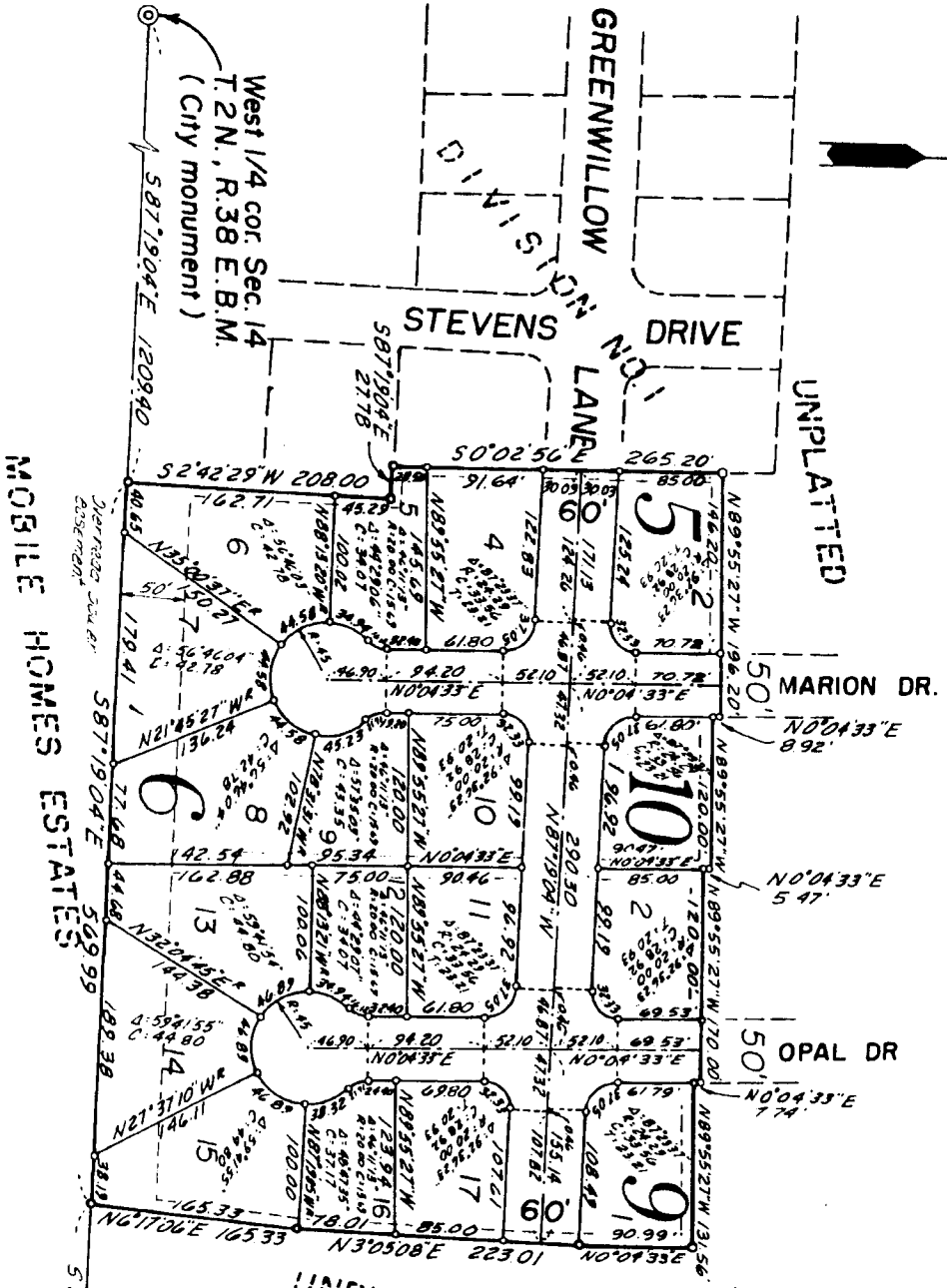
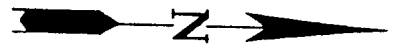


LINCOLN PARK SUBDIVISION

DIVISION NO. 5
 BONNEVILLE COUNTY, IDAHO
 PART OF
 THE N.W. 1/4 SECTION 14, T.2N, R.38 E.B.M.

First American Title Company
 Idaho Falls, Idaho 83404

This sketch is made solely for the purpose of assisting in locating the premises. The company assumes no liability for alleged loss or damage which may result from reliance on this map



NOTES:

- designates iron rods
- Utility easements are 8' through each lot unless otherwise shown
- A 10' wide utility easement is reserved along oil streets.
- The County will not maintain roads until constructed to their standards and a letter of acceptance is given.
- Building set-back line is 30 feet from adjacent streets.

MOBILE HOMES ESTATES

West 1/4 cor. Sec. 14
 T.2N, R.38 E.B.M.
 (City monument)

East 1/4 cor. Sec. 14
 T.2N, R.38 E.B.M.
 (Recorded corner)