

# FIRST AMENDED PLAT

(LOT 1, 2, LOTS 21-28 INCLUSIVE & PARK AREA, BLOCK 5)

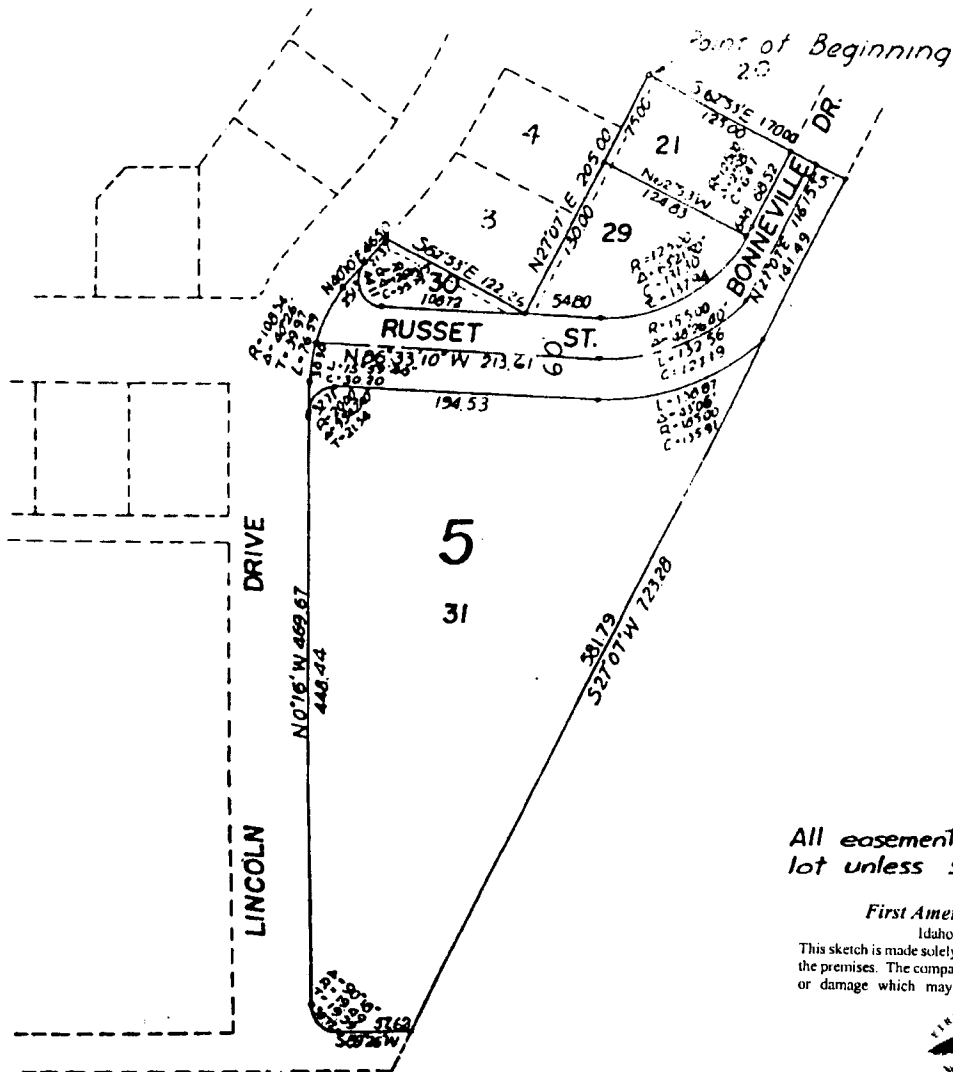
## LINDEN PARK ADDITION

### DIVISION NO. 1

TO THE CITY OF IDAHO FALLS IDAHO

Part of

NE 1/4 of Sec 20 T2N R38 E. B. M.



All easements are 8' thru each lot unless shown otherwise.

First American Title Company

Idaho Falls, Idaho 83404

This sketch is made solely for the purpose of assisting in locating the premises. The company assumes no liability for alleged loss or damage which may result from reliance on this map.

