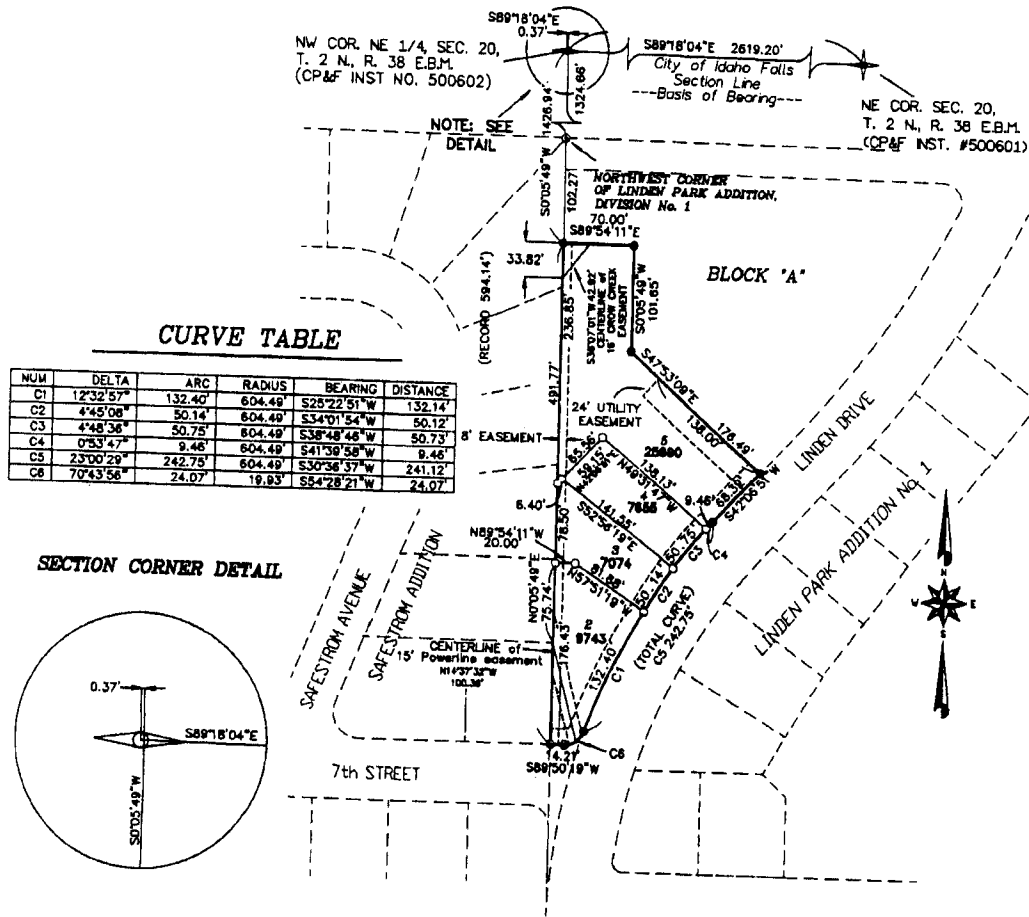


# Second Amended Plat of LINDEN PARK ADDITION Division No. 1

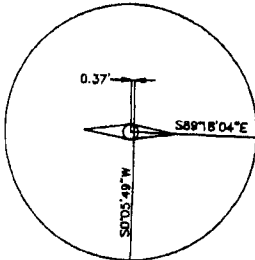
To the City of Idaho Falls, Bonneville County, Idaho  
Being a Replat of a portion of Block "A"  
of Linden Park Addition Division No. 1  
Part of The N.E. 1/4 of Section 20, T. 2 N., R. 38 E.B.M.



**CURVE TABLE**

NUM	DELTA	ARC	RADIUS	BEARING	DISTANCE
C1	12°32'57"	132.40'	604.49'	S28°22'51"W	132.14'
C2	4°45'08"	50.14'	604.49'	S34°01'54"W	50.12'
C3	4°48'36"	50.75'	604.49'	S38°48'46"W	50.73'
C4	0°53'47"	9.48'	604.49'	S41°39'58"W	9.46'
C5	23°00'29"	242.75'	604.49'	S30°38'37"W	241.12'
C6	70°43'56"	24.07'	19.93'	S54°28'21"W	24.07'

**SECTION CORNER DETAIL**



**NOTES**

- indicates a 1/2" x 24" iron rod placed with a yellow plastic cap marked L.S. 722.
- indicates a 1/2" x 24" iron rod found with a yellow plastic cap marked L.S. 722.
- indicates a 5/8" x 30" iron rod placed with a yellow plastic cap marked L.S. 722.
- indicates a 5/8" x 30" iron rod found with a yellow plastic cap marked L.S. 722.
- 15231** indicates lot area in square feet.
- a 15' wide utility and sidewalk easement is reserved along the street side of all lots; all other easement widths are as shown.

**First American Title Company**

Idaho Falls, Idaho 83404

This sketch is made solely for the purpose of assisting in locating the premises. The company assumes no liability for alleged loss or damage which may result from reliance on this map.

