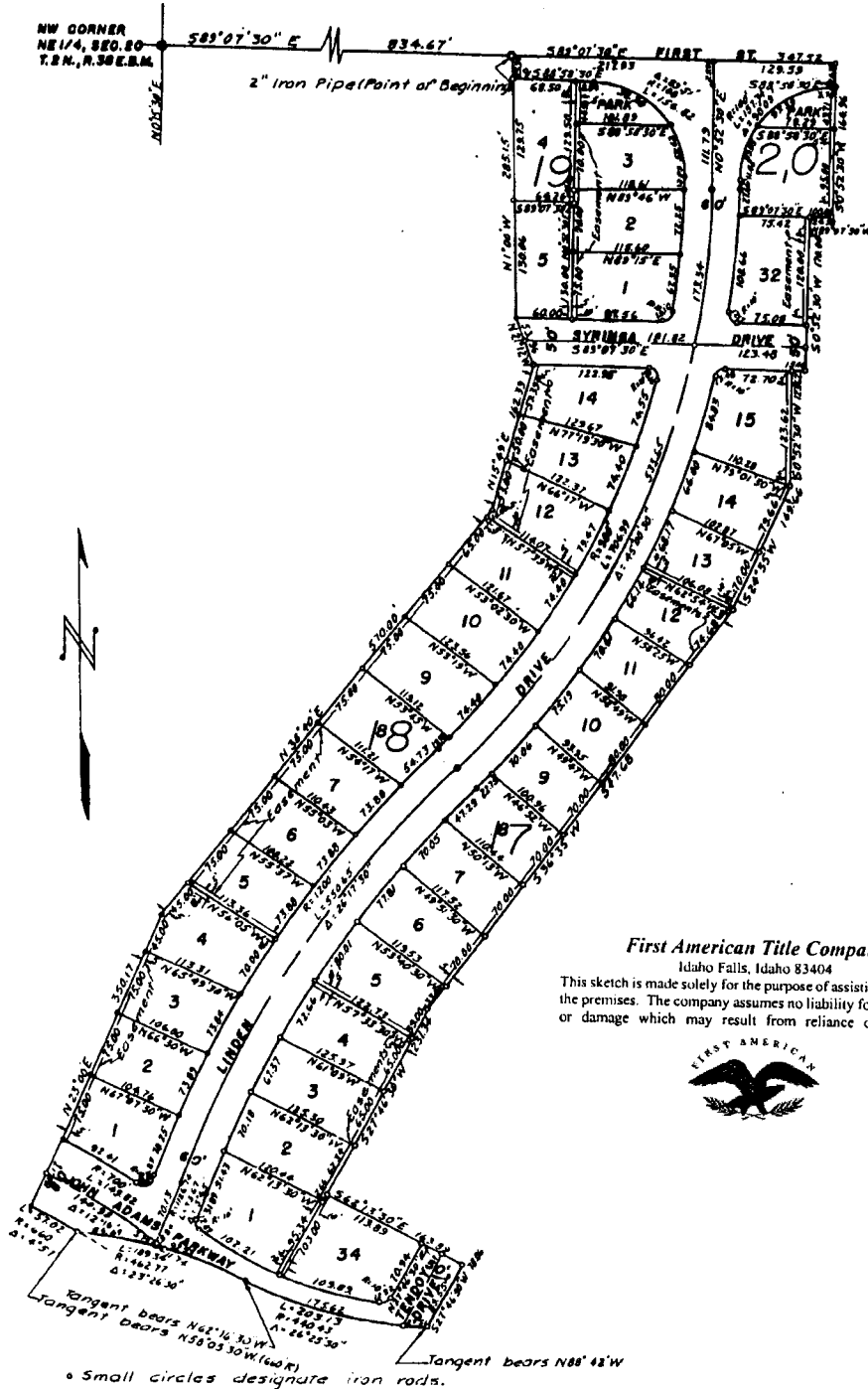


LINDEN PARK ADDITION
 DIVISION NO. 3
 TO
 THE CITY OF IDAHO FALLS, IDAHO
 Part of
 NE1/4 of Sec. 20, T.2N., R.38E.B.M.



First American Title Company
 Idaho Falls, Idaho 83404

This sketch is made solely for the purpose of assisting in locating the premises. The company assumes no liability for alleged loss or damage which may result from reliance on this map.



• Small circles designate iron rods.