

LINDEN PLACE CONDOMINIUM PHASE 4

INCLUDING THE FIRST AMENDMENT OF
UNITS 847, 849 & 851 OF PHASE 3

AN IDAHO CONDOMINIUM PROJECT

LOCATED IN BLOCK 1 OF LINDEN PARK ADDITION

DIVISION NO. 1

IDAHO FALLS, IDAHO

N 89° 44' 00" E

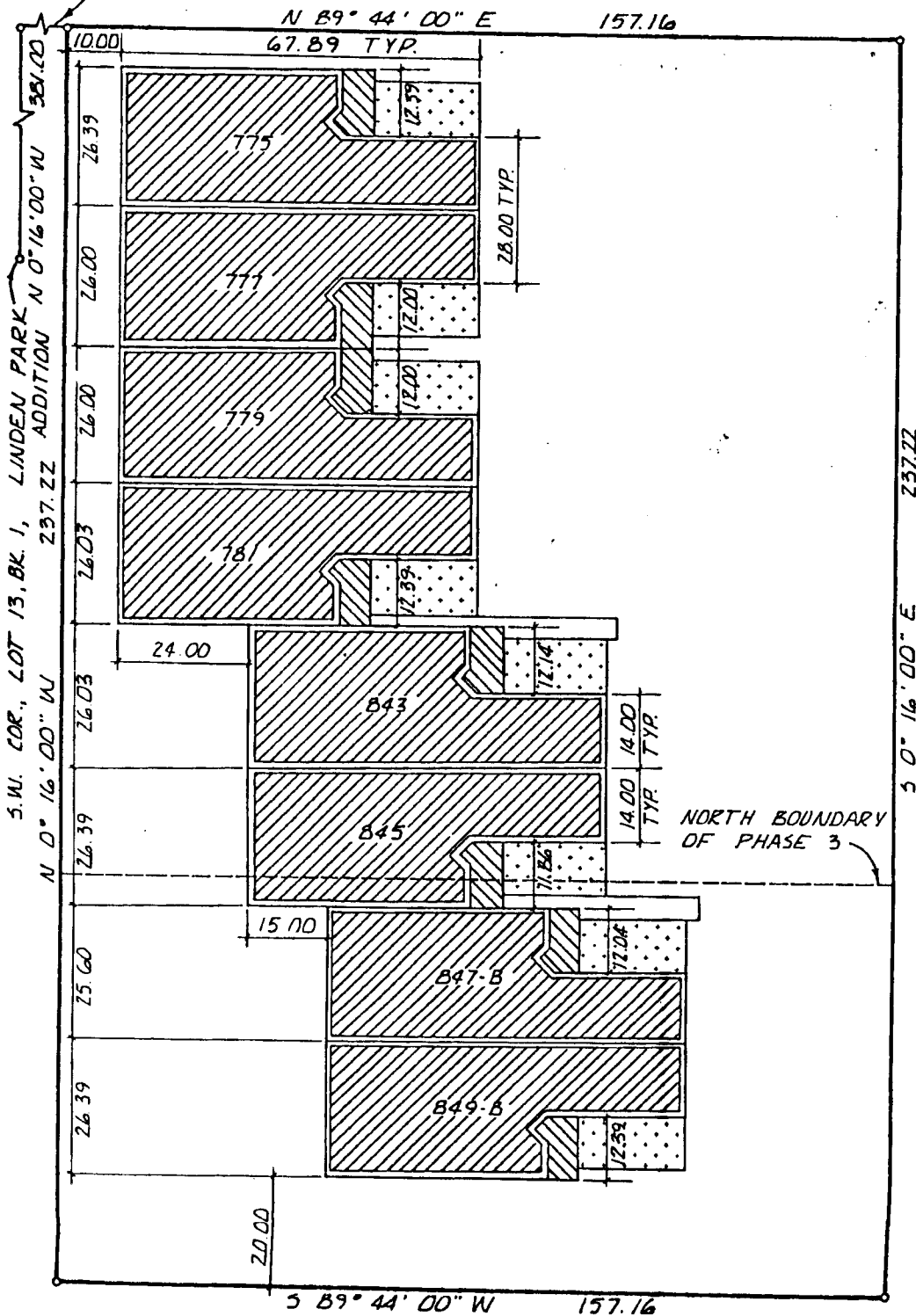
272.00



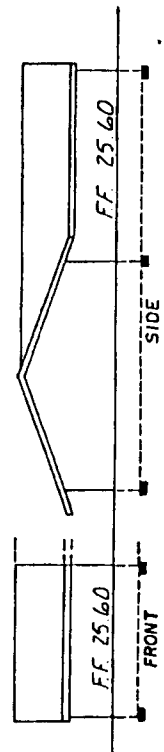
First American Title Company

Idaho Falls, Idaho 83404

This sketch is made solely for the purpose of assisting in locating the premises. The company assumes no liability for alleged loss or damage which may result from reliance on this map.



237.22
3 0° 16' 00" E



LINDEN ELEVATIONS