



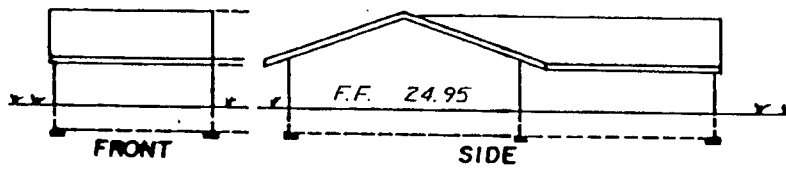
# LINDEN PLACE CONDOMINIUM

AMENDMENT TO UNITS  
853, 855 & 857 OF PHASE 3  
AN IDAHO CONDOMINIUM PROJECT  
LOCATED IN BLOCK I OF LINDEN PARK ADDITION  
DIVISION NO. 1 IDAHO FALLS, IDAHO

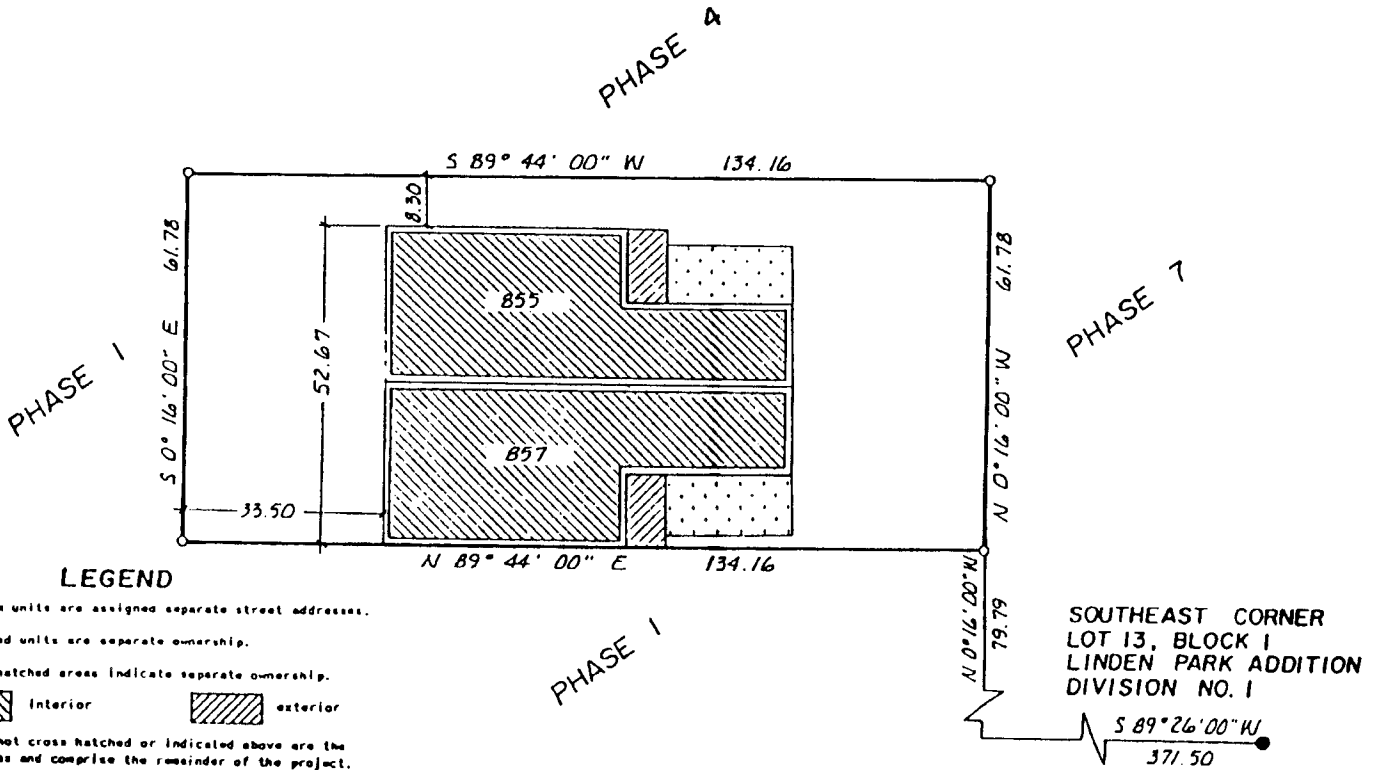
*First American Title Company*

Idaho Falls, Idaho 83404

This sketch is made solely for the purpose of assisting in locating the premises. The company assumes no liability for alleged loss or damage which may result from reliance on this map.



LINDEN ELEVATIONS



**LEGEND**

Condominium units are assigned separate street addresses.

All numbered units are separate ownership.

All cross hatched areas indicate separate ownership.

interior      exterior

All areas not cross hatched or indicated above are the common areas and comprise the remainder of the project.

common      restricted common

All elevations shown are to Idaho Falls City base.

SOUTHEAST CORNER  
LOT 13, BLOCK I  
LINDEN PARK ADDITION  
DIVISION NO. 1

S 89° 26' 00" W  
371.50