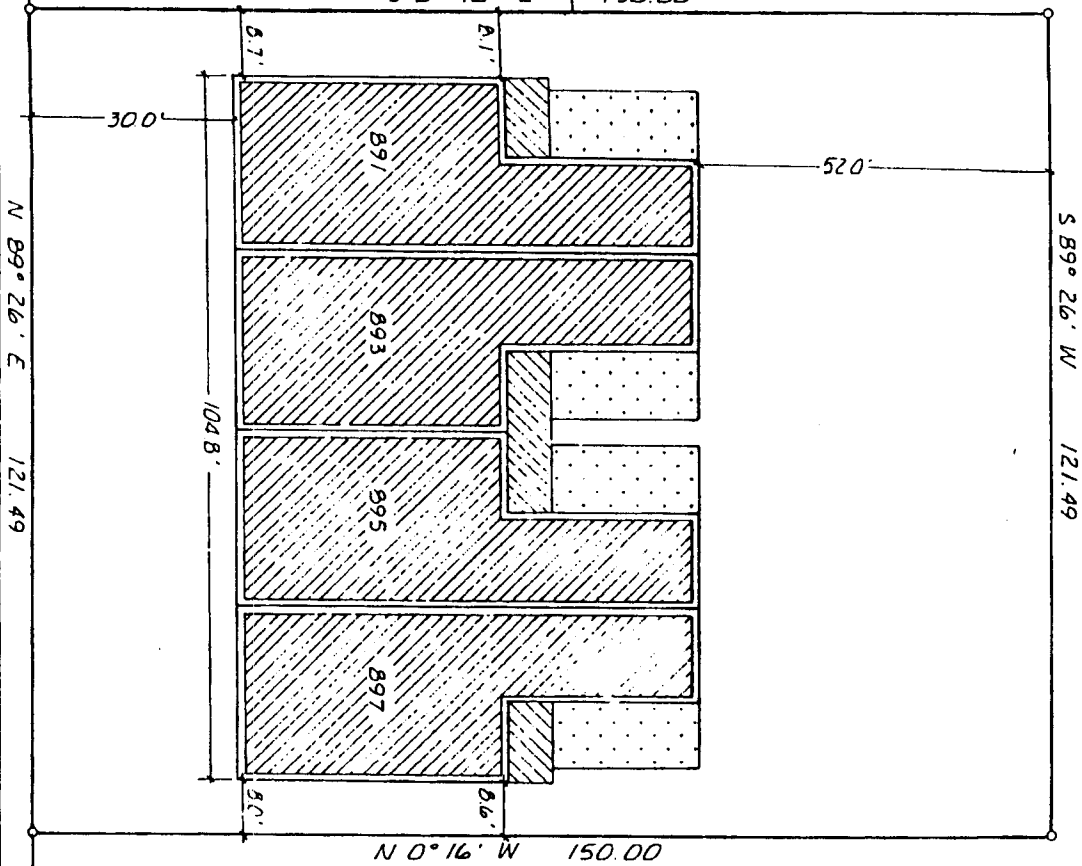




LINDEN PLACE PHASE 1
LINDEN PLACE PHASE 3

S 0° 16' E 150.00



CAMLU APARTMENTS

LINDEN PLACE CONDOMINIUM PHASE 7

AN IDAHO CONDOMINIUM PROJECT
LOCATED IN BLOCK 1 OF LINDEN PARK ADDITION
DIVISION NO. 1 IDAHO FALLS, IDAHO

First American Title Company

Idaho Falls, Idaho 83404

This sketch is made solely for the purpose of assisting in locating the premises. The company assumes no liability for alleged loss or damage which may result from reliance on this map.



LEGEND

Condominium units are assigned separate street addresses.
All numbered units are separate ownerships.

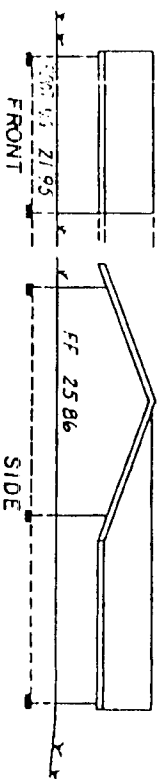
All cross hatched areas indicate separate ownerships.

Interior  exterior 

All areas not cross hatched or indicated above are the common areas and comprise the remainder of the project.

 restricted common

All elevations shown are to Idaho Falls City base.



LINDEN ELEVATIONS

9TH STREET

N 89° 26' E 121.49

S 89° 26' W 250.00

SOUTHEAST CORNER
LOT 13, BLOCK 1
LINDEN PARK ADDITION
DIVISION NO. 1