

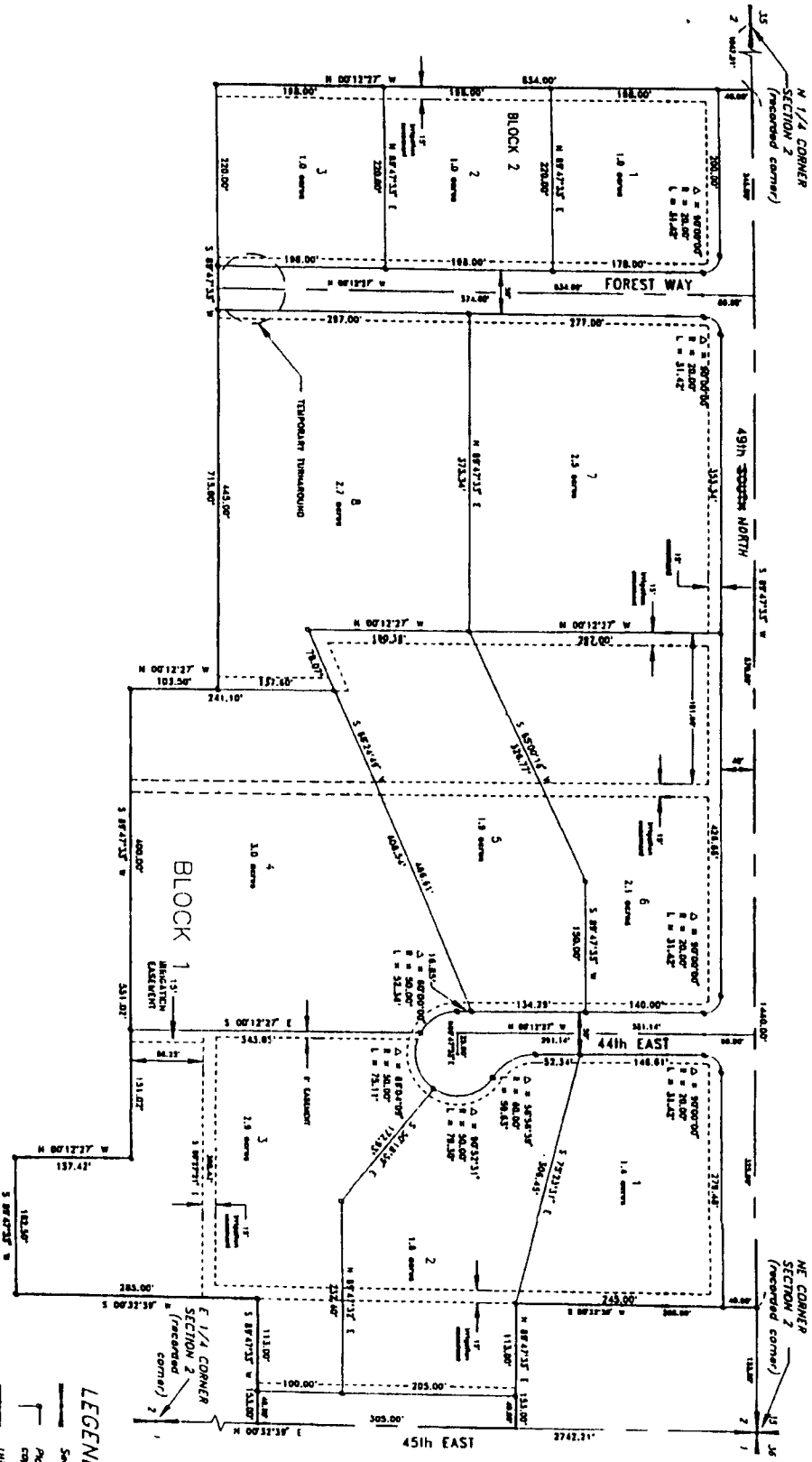
FIRST AMENDED PLAT OF LITTLE SAND CREEK FOREST ESTATES

Part of
Section 2, T.2N., R.38E., B.M.,
BONNEVILLE COUNTY, IDAHO

First American Title Company

Blaine Falls, Idaho 83404

This sketch is made solely for the purpose of assisting in locating the premises. The company assumes no liability for alleged loss or damage which may result from reliance on this map.



LEGEND

- Section control corners
- Plotted 1/2" iron rod with cap marked P.L.S. 4563
- Utility easements are 10' wide along the street side of all lots
- Side yard and rear yard easements are 5' unless otherwise shown.