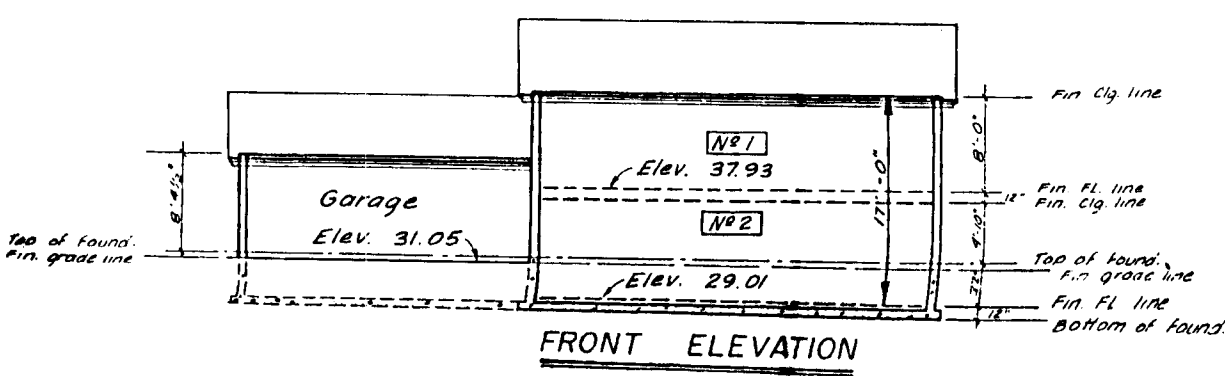
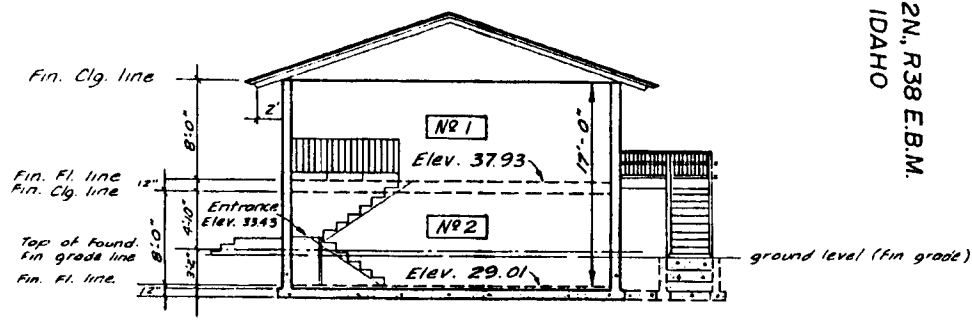
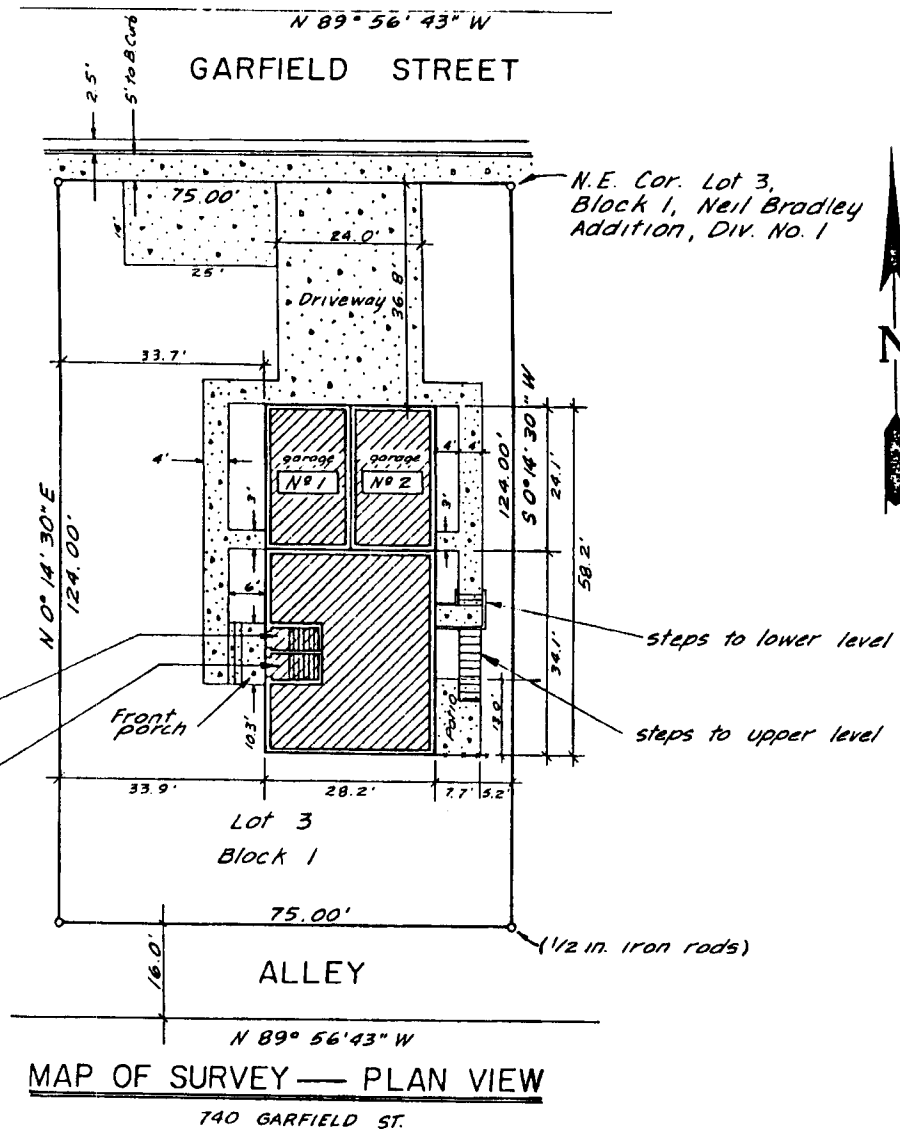


LYLE DOLVEN CONDOMINIUMS

AN IDAHO CONDOMINIUM PROJECT

PART OF THE SE1/4 OF THE SW1/4 SEC. 17 T2N, R38 E.B.M.
IDAHO FALLS, BONNEVILLE COUNTY, IDAHO



First American Tile Company
Idaho Falls, Idaho 83404

This sketch is made solely for the purpose of assisting in locating the premises. The company assumes no liability for alleged loss or damage which may result from reliance on this map.

