

LYNBROOKE SUBDIVISION DIVISION NO. 1 BONNEVILLE COUNTY, IDAHO PART OF THE S.W. 1/4, N.W. 1/4 SEC. 34 T. 2 N., R. 37 E., B.M.

LEGEND & NOTES

- 5/8" x 3/8" Steel rebar set with plastic cap stamped L.S.8785
- 1/2" x 24" Steel rebar set with plastic cap stamped L.S.8795
- 1/2" Steel rebar found with caps stamped L.S.8795

A fifteen foot wide Utility Easement is hereby reserved along all road frontages within each lot. All other utility easements are as shown.

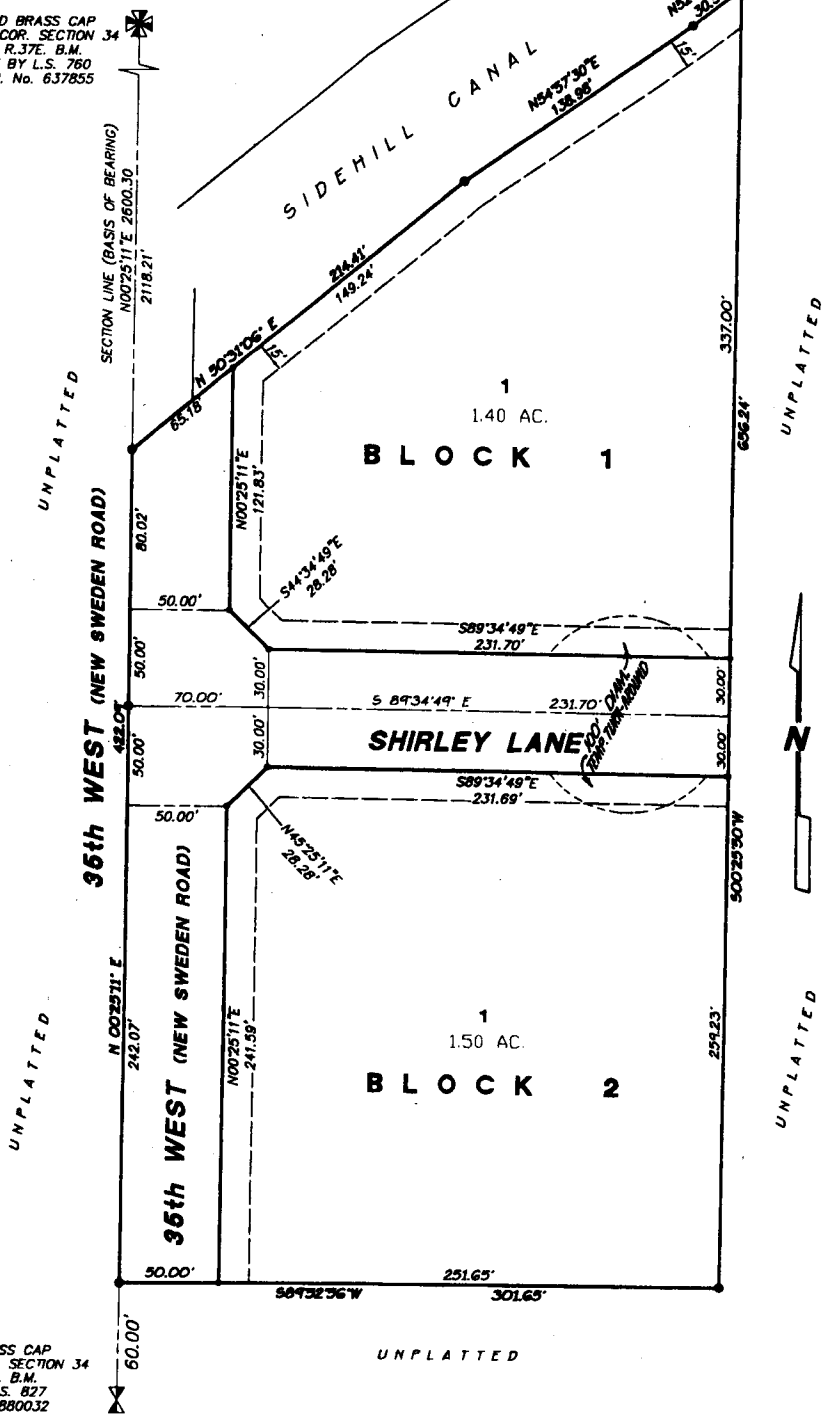
Bonneville County will not maintain roads until improved to County Standards and officially approved and accepted.

Private approaches shall be constructed as shown on the approved Improvement Drawings on file at the offices of the County Engineer and Mountain River Engineering and drainage swales shall be maintained by the lot owner.

No direct vehicular access allowed onto 35th West from Blocks 1 and 2.

First American Title Company
Idaho Falls, Idaho 83404
While this is a photographic reproduction of the recorded plat, the Company assumes no liability for variations, if any, with a re-survey.

FOUND BRASS CAP
N.W. COR. SECTION 34
T.2N. R.37E. B.M.
CP&F BY L.S. 760
INSTR. No. 637855



FOUND BRASS CAP
W 1/4 COR. SECTION 34
T.2N. R.37E. B.M.
CP&F BY L.S. 627
INSTR. No. 880032