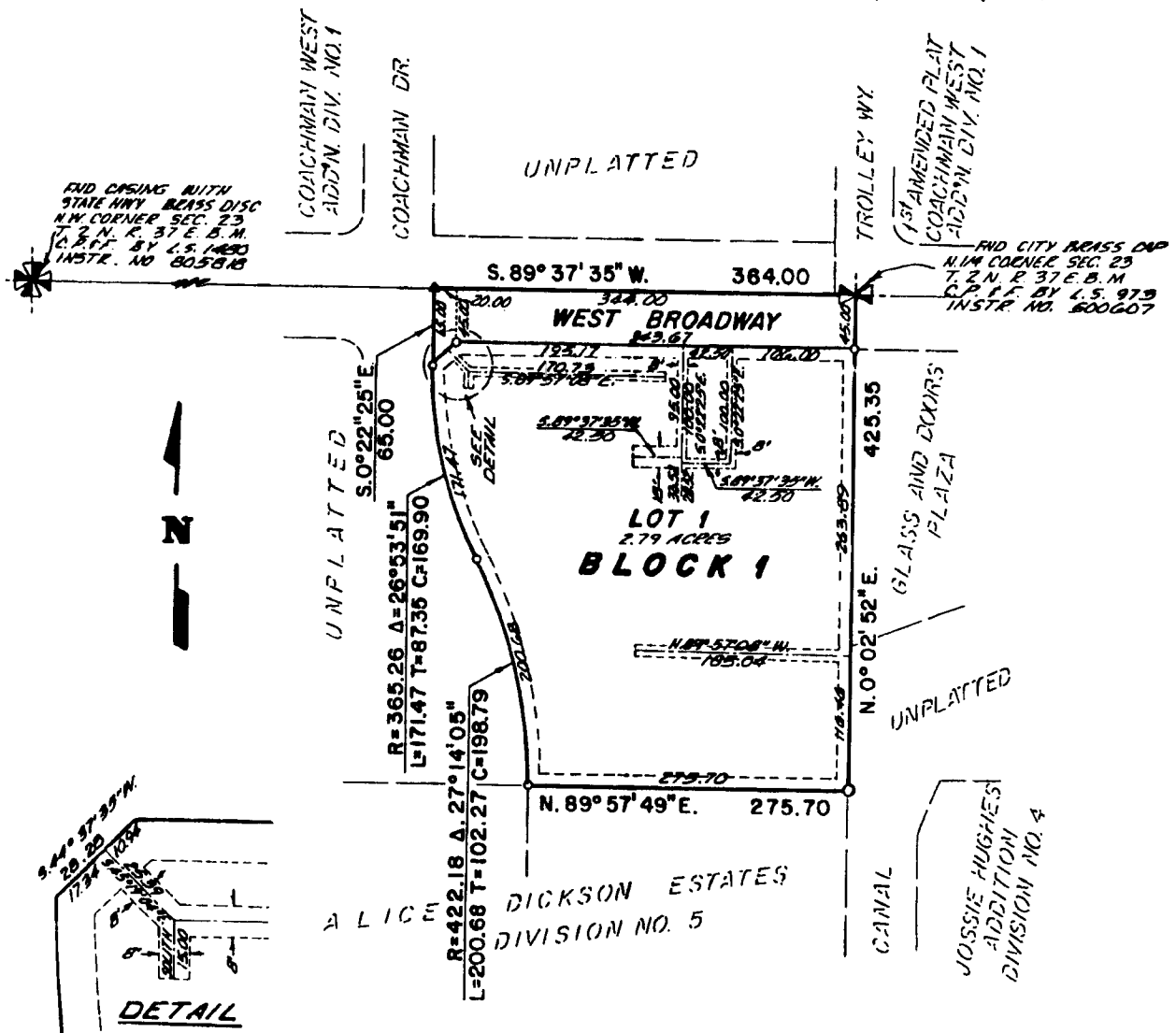


MADSEN ADDITION DIVISION NO. 1

TO THE CITY OF IDAHO FALLS, BONNEVILLE COUNTY, IDAHO
BEING PART OF THE N.E. 1/4 NW. 1/4 SECTION 23, T 2 N., R. 37 E., B.M.



First American Title Company

Idaho Falls, Idaho 83404

This sketch is made solely for the purpose of assisting in locating the premises. The company assumes no liability for alleged loss or damage which may result from reliance on this map.



LEGEND & NOTES

- ▲ Magnetic nail set in asphalt roadway
- 5/8" Steel re-bar found with no cap
- 1/2" Steel re-bar found with no caps

Utility Easements are ten feet wide unless otherwise noted.