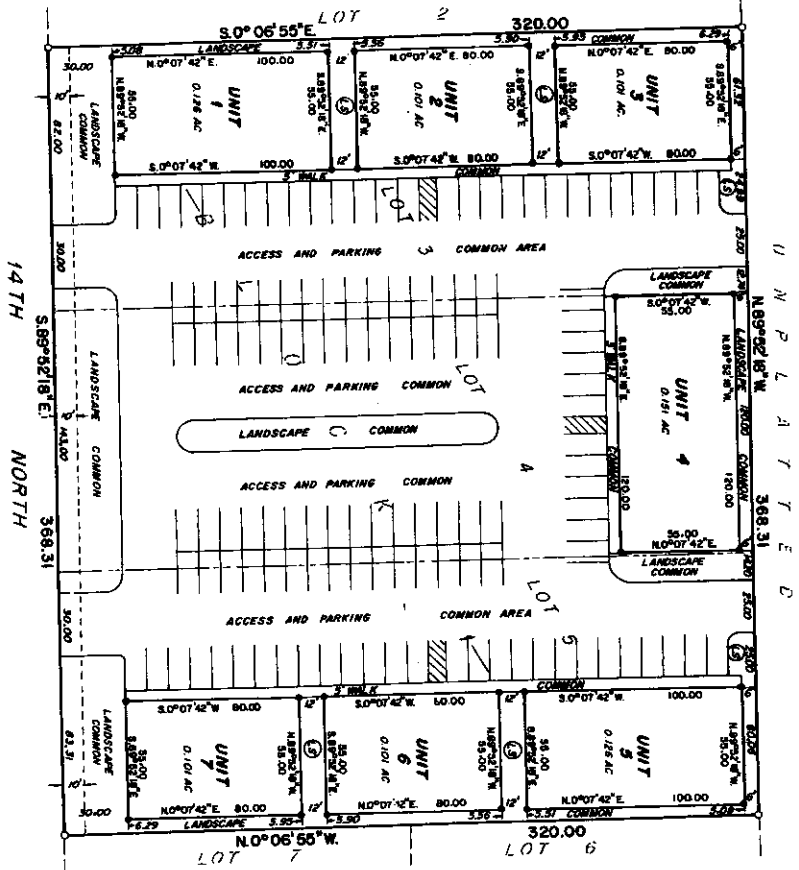


320' ALUMINUM CHD  
 1/2" X 1/2" X 1/2" S  
 1/2" X 1/2" X 1/2" S  
 1/2" X 1/2" X 1/2" S

S. 0°06'55"E 320.00' SECTION LINE- BM 19 OF BOUNDING CITY OF IDAHO FALLS DATUM  
 2031.83

SEE PLANNING MAP  
 WEST 1/4 CORNER 355C.15  
 OF 1/4 SECTION 15  
 T22N. R.38E. S.15W.  
 PLAT NO. 118294

**MAJESTIC ACRES OFFICE COMPLEX**  
 PURSUANT TO IDAHO CODE TITLE 88, CHAPTER 15  
**CITY OF ANMON, BONNEVILLE COUNTY, IDAHO**  
 LYING IN LOTS 3, 4, AND 5, BLOCK 1, MAJESTIC ACRES, DIVISION NO. 1  
 IN THE NW 1/4 OF THE NW 1/4 OF SECTION 15, T.22N., R.38E., S.15W.



First American Title Company  
 Idaho Falls, ID 83404  
 While this is a photographic  
 reproduction of the recorded  
 plat, the company assumes  
 no liability for variations,  
 if any, with a re-survey.

**LEGEND & NOTES**

- 1/2" Round Rebar, fixed with plastic caps spaced 15'-0" O.C.
  - 1/2" x 2" Stud Rebar set with plastic caps spaced 15'-0" O.C.
  - ⑤ Landscape (common area)
  - Lot Boundary
- There is an existing ten foot wide Public Utility Easement along 14th North within this project. All other easements would be as shown.
- There are 128' low curb by twenty foot parking stalls.
- Access, parking, walk, and landscape areas are common areas.
- Boundary of and boundaries are measured parallel with or perpendicular to the North and South plat boundary.
- Each unit consists of the walls, piping, fixtures by the Unit Boundary floor including the head in 3" all requirements normal, the support of the ceiling, landscape, and exterior, and easements set forth in the Declaration of Easements, Covenants and Restrictions of Majestic Acres Office Complex.
- The placement of buildings within each unit is governed by setback lines as required by the City of Anmon, and the Declaration of Covenants, Conditions and Restrictions of Majestic Acres Office Complex.
- For District 7 Health Department Approval and Program, View Right statement, see the Majestic Acres Division No. 1 plat recorded December 22, 2000 under instrument No. 1027552.