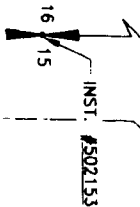


(HITT ROAD) 25th EAST

BASIS OF BEARING - CITY OF IDAHO FALLS DATUM



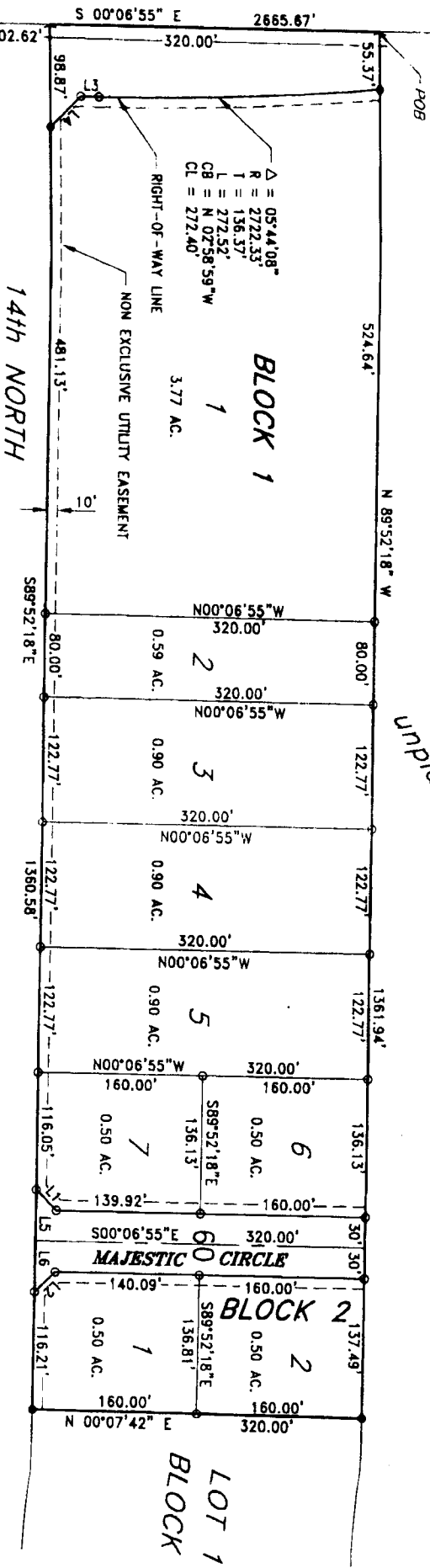
AN ADDITION TO THE CITY OF AMMON, BONNEVILLE COUNTY, IDAHO
PART OF THE SECTION 15, T 2 N., R. 38 E., B.M.

MAJESTIC ACRES
DIVISION NO. 1

First American Title Company

Idaho Falls, Idaho 83404

This sketch is made solely for the purpose of assisting in locating the premises. The company assumes no liability for alleged loss or damage which may result from reliance on this map.



LINE	DIRECTION	DISTANCE
L1	N45°00'23"E	28.34'
L2	S44°59'37"E	28.22'
L3	S00°06'55"W	18.12'
L4	S44°59'36"E	42.34'
L5	S89°52'18"E	50.09'
L6	S89°52'18"E	49.92'

LINCOLN INDUSTRIAL
PARK DIVISION NO. 1

LINCOLN INDUSTRIAL

LEGEND

- Section control corners
- Placed 5/8"x10" iron rod with cap marked P.L.S. 4563
- Placed 1/2"x24" iron rod with cap marked P.L.S. 4563
- Utility easements are 10' wide along the frontage of all lots. Side yard and rear yard easements are 8' unless otherwise shown.
- Monument to be placed after construction.
- Point of Beginning