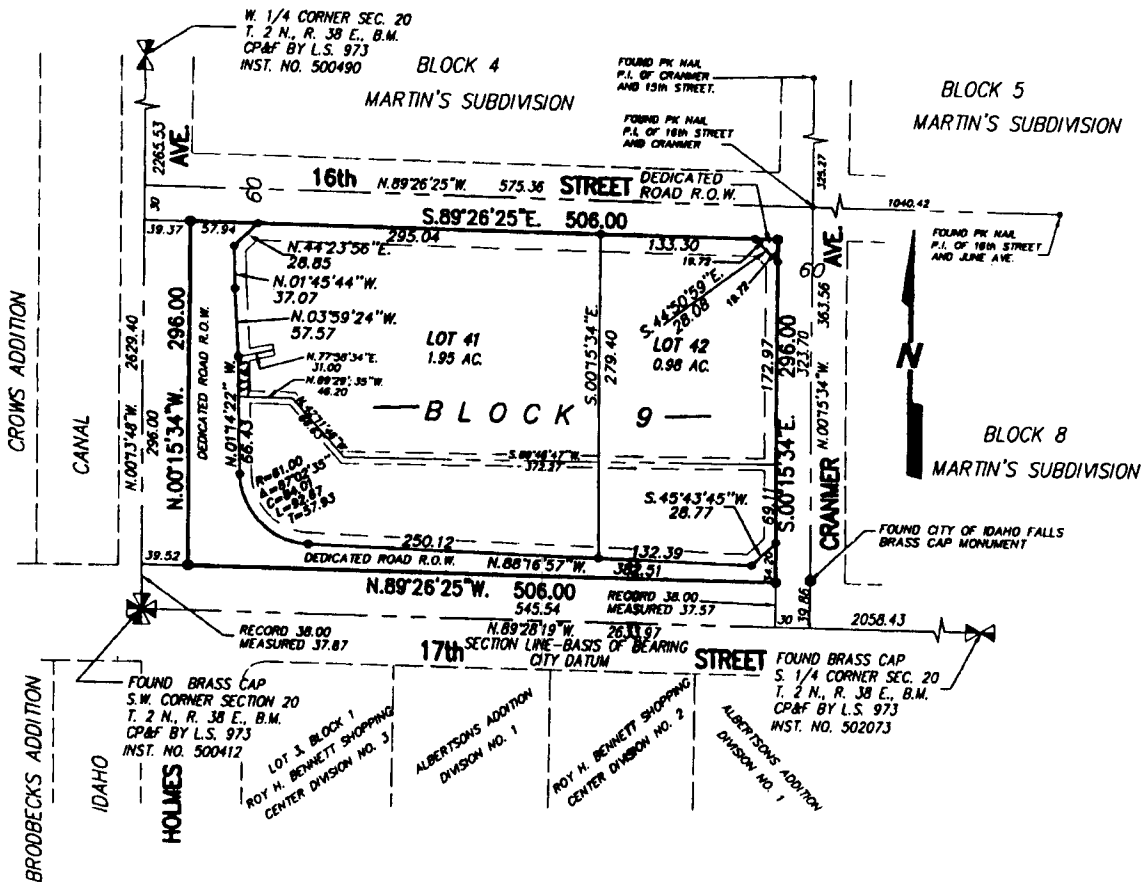


# THE FIRST AMENDED PLAT OF MARTIN'S SUBDIVISION

AN ADDITION TO THE CITY OF IDAHO FALLS, BONNEVILLE COUNTY, IDAHO  
 BEING A REPLAT OF , BLOCK 9 MARTIN'S SUBDIVISION  
 IN THE S.W. 1/4 S.W. 1/4, SECTION 20, T. 2 N., R. 38 E., B.M.



**First American Title Company**

Idaho Falls, Idaho 83404

This sketch is made solely for the purpose of assisting in locating the premises. The company assumes no liability for alleged loss or damage which may result from reliance on this map.



**LEGEND & NOTES**

- 5/8" x 30" Steel Re-bar set with plastic cap stamped L.S. 8798
- 1/2" x 24" Steel Re-bar set with plastic cap stamped L.S. 8798

Steel Re-bar found with caps stamped as shown

----- A Ten foot wide Utility Easement is hereby granted along all road frontages within each lot except along 16" Street which is 25' feet wide. All other easements are Eight feet wide unless otherwise noted.