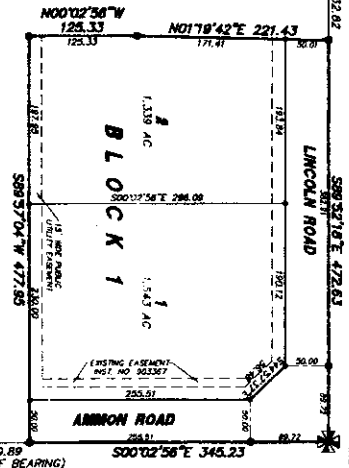


**MAVERIK SUBDIVISION**  
**DIVISION NO. 1**  
**AN ADDITION TO THE CITY OF AMMON,**  
**BONNEVILLE COUNTY, IDAHO**  
**BEING PART OF SECTION 15, T24N, R30E, B1M**

BRASS CAP  
 N 1/4 COR. SECTION 15  
 T24N, R30E, B1M  
 GRAN. BY L.S. 873  
 INSTR. NO. 200661

2760.19  
 S94°57'19"E 2633.82

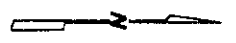


BRASS CAP  
 N.E. COR. SECTION 15  
 T24N, R30E, B1M  
 GRAN. BY L.S. 877  
 INSTR. NO. 201728

SECTION LINE (BASIS OF BEARING)  
 CITY OF IDAHO FALLS DATUM—PRE 2004  
 S00°02'56"E 2639.89

BRASS CAP  
 E 1/4 COR. SECTION 15  
 T24N, R30E, B1M  
 GRAN. BY L.S. 780  
 INSTR. NO. 201874

First American Title Company  
 Idaho Falls, ID 83404  
 While this is a photographic  
 reproduction of the recorded  
 plat, the company assumes  
 no liability for variations,  
 if any, with a re-survey.



**LEGEND & NOTES**

- 5/8" x 3/8" Steel nail set with plastic cap stamped L.S. 8795
- 1/2" x 24" Steel rebar set with plastic cap stamped L.S. 8795
- Survey spots with washer stamped L.S. 8795

----- A Blank lot with Public Utility Easement is hereby grandfathered along all road frontages within each 1/4. All other public utility easements are noted otherwise.  
 This division contains 2 lots. (144 lots average lot size.)

Unless stated to the right to install, maintain, and operate their equipment above and below ground and all other related facilities within the Public Utility Easement (PUE) identified on the plat map or may be necessary or desirable in providing utility services within and without the lots described herein, including the right of access to and from the plat to any equipment or structure within the PUE at the lot owner's expense, or the plat may impose such structures at the lot owner's expense. All of these may require structures be placed within the PUE or any other obstruction which interferes with the use of the PUE without the prior written approval of the utilities with facilities in the PUE.