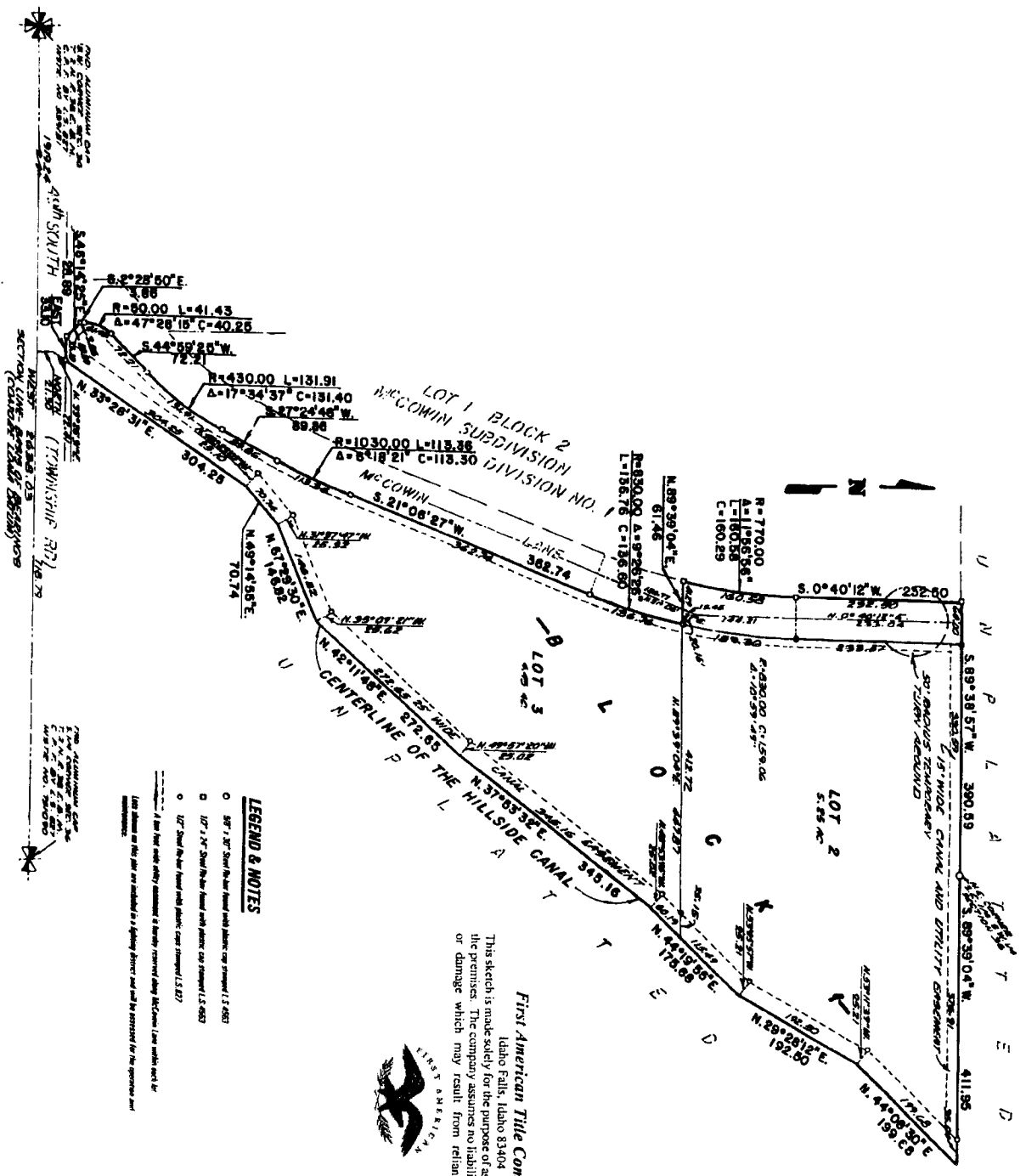


**FIRST AMENDED PLAT OF THE
MCCOWIN SUBDIVISION - DIVISION NO. 1
BONNEVILLE COUNTY, IDAHO**
BEING A REPLAT OF BLOCK 1, MCCOWIN SUBDIVISION, DIVISION NO. 1
IN THE S. 1/2 S. 1/2 SECTION 36 T. 2 N. R. 30 E. B.M.



LEGEND & NOTES

- 3/4" - 3/8" Steel Rebar Round road markers, cap stamped (12-4983)
- 1/2" - 1/4" Steel Rebar Round road markers, cap stamped (12-4983)
- 1/2" Steel Rebar Round road markers, cap stamped (12-4983)

1. This sketch is made solely for the purpose of assisting in locating the premises. The company assumes no liability for alleged loss or damage which may result from reliance on this map.



First American Title Company
Idaho Falls, Idaho 83404