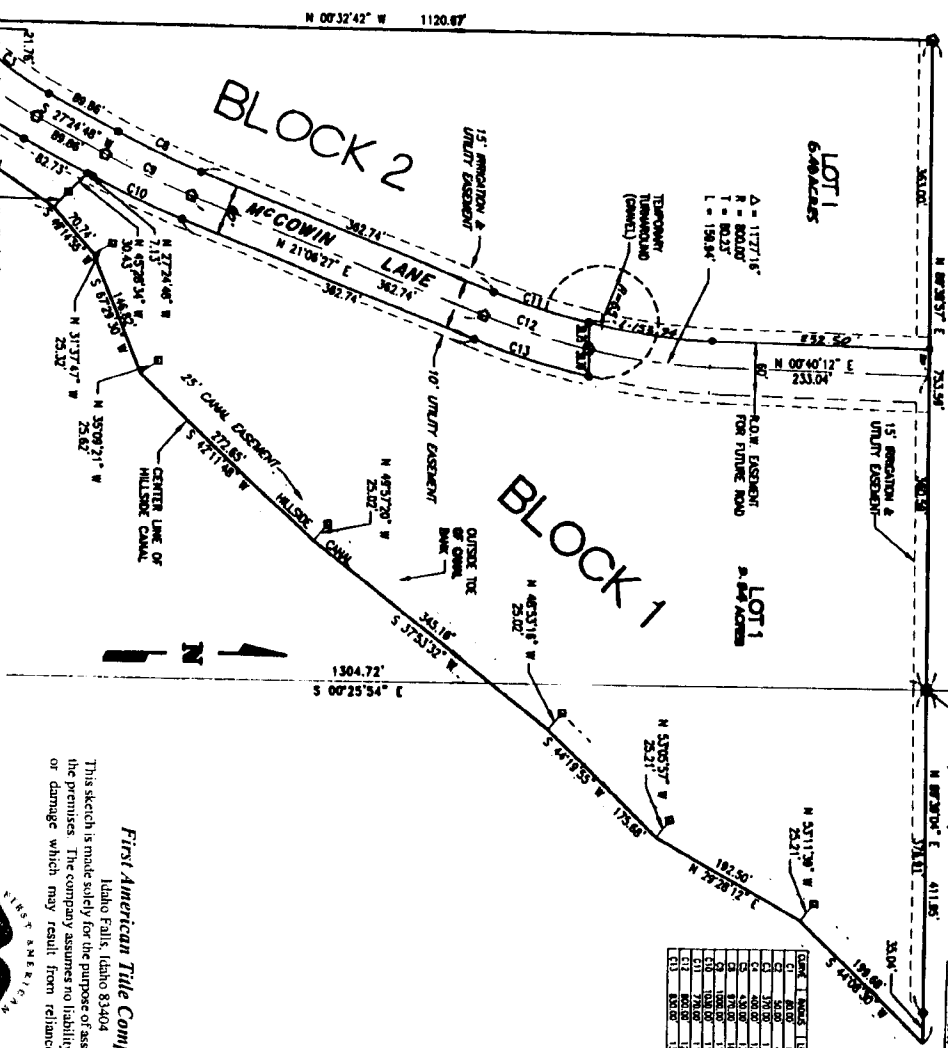


# MCCOWIN SUBDIVISION-DIVISION NO. 1 BONNEVILLE COUNTY, IDAHO BEING A REPEAT OF BLACK HAWK-DIVISION NO. 1 IN THE S 1/2 S 1/2 SECTION 36 T. 2 N. R. 38 E. R.M.

| LINE | BEARING         | DISTANCE | AREA    |
|------|-----------------|----------|---------|
| 1    | N 87° 30' 00" E | 1120.87  | 1120.87 |
| 2    | S 00° 32' 42" W | 1120.87  | 1120.87 |
| 3    | N 00° 40' 12" E | 233.04   | 233.04  |
| 4    | S 00° 25' 54" W | 1304.72  | 1304.72 |
| 5    | N 53° 11' 30" W | 25.21    | 25.21   |
| 6    | N 53° 11' 30" W | 25.21    | 25.21   |
| 7    | N 53° 11' 30" W | 25.21    | 25.21   |
| 8    | N 53° 11' 30" W | 25.21    | 25.21   |
| 9    | N 53° 11' 30" W | 25.21    | 25.21   |
| 10   | N 53° 11' 30" W | 25.21    | 25.21   |
| 11   | N 53° 11' 30" W | 25.21    | 25.21   |
| 12   | N 53° 11' 30" W | 25.21    | 25.21   |
| 13   | N 53° 11' 30" W | 25.21    | 25.21   |
| 14   | N 53° 11' 30" W | 25.21    | 25.21   |
| 15   | N 53° 11' 30" W | 25.21    | 25.21   |
| 16   | N 53° 11' 30" W | 25.21    | 25.21   |
| 17   | N 53° 11' 30" W | 25.21    | 25.21   |
| 18   | N 53° 11' 30" W | 25.21    | 25.21   |
| 19   | N 53° 11' 30" W | 25.21    | 25.21   |
| 20   | N 53° 11' 30" W | 25.21    | 25.21   |
| 21   | N 53° 11' 30" W | 25.21    | 25.21   |
| 22   | N 53° 11' 30" W | 25.21    | 25.21   |
| 23   | N 53° 11' 30" W | 25.21    | 25.21   |
| 24   | N 53° 11' 30" W | 25.21    | 25.21   |
| 25   | N 53° 11' 30" W | 25.21    | 25.21   |
| 26   | N 53° 11' 30" W | 25.21    | 25.21   |
| 27   | N 53° 11' 30" W | 25.21    | 25.21   |
| 28   | N 53° 11' 30" W | 25.21    | 25.21   |
| 29   | N 53° 11' 30" W | 25.21    | 25.21   |
| 30   | N 53° 11' 30" W | 25.21    | 25.21   |
| 31   | N 53° 11' 30" W | 25.21    | 25.21   |
| 32   | N 53° 11' 30" W | 25.21    | 25.21   |
| 33   | N 53° 11' 30" W | 25.21    | 25.21   |
| 34   | N 53° 11' 30" W | 25.21    | 25.21   |
| 35   | N 53° 11' 30" W | 25.21    | 25.21   |
| 36   | N 53° 11' 30" W | 25.21    | 25.21   |
| 37   | N 53° 11' 30" W | 25.21    | 25.21   |
| 38   | N 53° 11' 30" W | 25.21    | 25.21   |
| 39   | N 53° 11' 30" W | 25.21    | 25.21   |
| 40   | N 53° 11' 30" W | 25.21    | 25.21   |
| 41   | N 53° 11' 30" W | 25.21    | 25.21   |
| 42   | N 53° 11' 30" W | 25.21    | 25.21   |
| 43   | N 53° 11' 30" W | 25.21    | 25.21   |
| 44   | N 53° 11' 30" W | 25.21    | 25.21   |
| 45   | N 53° 11' 30" W | 25.21    | 25.21   |
| 46   | N 53° 11' 30" W | 25.21    | 25.21   |
| 47   | N 53° 11' 30" W | 25.21    | 25.21   |
| 48   | N 53° 11' 30" W | 25.21    | 25.21   |
| 49   | N 53° 11' 30" W | 25.21    | 25.21   |
| 50   | N 53° 11' 30" W | 25.21    | 25.21   |
| 51   | N 53° 11' 30" W | 25.21    | 25.21   |
| 52   | N 53° 11' 30" W | 25.21    | 25.21   |
| 53   | N 53° 11' 30" W | 25.21    | 25.21   |
| 54   | N 53° 11' 30" W | 25.21    | 25.21   |
| 55   | N 53° 11' 30" W | 25.21    | 25.21   |
| 56   | N 53° 11' 30" W | 25.21    | 25.21   |
| 57   | N 53° 11' 30" W | 25.21    | 25.21   |
| 58   | N 53° 11' 30" W | 25.21    | 25.21   |
| 59   | N 53° 11' 30" W | 25.21    | 25.21   |
| 60   | N 53° 11' 30" W | 25.21    | 25.21   |
| 61   | N 53° 11' 30" W | 25.21    | 25.21   |
| 62   | N 53° 11' 30" W | 25.21    | 25.21   |
| 63   | N 53° 11' 30" W | 25.21    | 25.21   |
| 64   | N 53° 11' 30" W | 25.21    | 25.21   |
| 65   | N 53° 11' 30" W | 25.21    | 25.21   |
| 66   | N 53° 11' 30" W | 25.21    | 25.21   |
| 67   | N 53° 11' 30" W | 25.21    | 25.21   |
| 68   | N 53° 11' 30" W | 25.21    | 25.21   |
| 69   | N 53° 11' 30" W | 25.21    | 25.21   |
| 70   | N 53° 11' 30" W | 25.21    | 25.21   |
| 71   | N 53° 11' 30" W | 25.21    | 25.21   |
| 72   | N 53° 11' 30" W | 25.21    | 25.21   |
| 73   | N 53° 11' 30" W | 25.21    | 25.21   |
| 74   | N 53° 11' 30" W | 25.21    | 25.21   |
| 75   | N 53° 11' 30" W | 25.21    | 25.21   |
| 76   | N 53° 11' 30" W | 25.21    | 25.21   |
| 77   | N 53° 11' 30" W | 25.21    | 25.21   |
| 78   | N 53° 11' 30" W | 25.21    | 25.21   |
| 79   | N 53° 11' 30" W | 25.21    | 25.21   |
| 80   | N 53° 11' 30" W | 25.21    | 25.21   |
| 81   | N 53° 11' 30" W | 25.21    | 25.21   |
| 82   | N 53° 11' 30" W | 25.21    | 25.21   |
| 83   | N 53° 11' 30" W | 25.21    | 25.21   |
| 84   | N 53° 11' 30" W | 25.21    | 25.21   |
| 85   | N 53° 11' 30" W | 25.21    | 25.21   |
| 86   | N 53° 11' 30" W | 25.21    | 25.21   |
| 87   | N 53° 11' 30" W | 25.21    | 25.21   |
| 88   | N 53° 11' 30" W | 25.21    | 25.21   |
| 89   | N 53° 11' 30" W | 25.21    | 25.21   |
| 90   | N 53° 11' 30" W | 25.21    | 25.21   |
| 91   | N 53° 11' 30" W | 25.21    | 25.21   |
| 92   | N 53° 11' 30" W | 25.21    | 25.21   |
| 93   | N 53° 11' 30" W | 25.21    | 25.21   |
| 94   | N 53° 11' 30" W | 25.21    | 25.21   |
| 95   | N 53° 11' 30" W | 25.21    | 25.21   |
| 96   | N 53° 11' 30" W | 25.21    | 25.21   |
| 97   | N 53° 11' 30" W | 25.21    | 25.21   |
| 98   | N 53° 11' 30" W | 25.21    | 25.21   |
| 99   | N 53° 11' 30" W | 25.21    | 25.21   |
| 100  | N 53° 11' 30" W | 25.21    | 25.21   |

| LINE | BEARING         | DISTANCE | AREA    |
|------|-----------------|----------|---------|
| 1    | N 87° 30' 00" E | 1120.87  | 1120.87 |
| 2    | S 00° 32' 42" W | 1120.87  | 1120.87 |
| 3    | N 00° 40' 12" E | 233.04   | 233.04  |
| 4    | S 00° 25' 54" W | 1304.72  | 1304.72 |
| 5    | N 53° 11' 30" W | 25.21    | 25.21   |
| 6    | N 53° 11' 30" W | 25.21    | 25.21   |
| 7    | N 53° 11' 30" W | 25.21    | 25.21   |
| 8    | N 53° 11' 30" W | 25.21    | 25.21   |
| 9    | N 53° 11' 30" W | 25.21    | 25.21   |
| 10   | N 53° 11' 30" W | 25.21    | 25.21   |
| 11   | N 53° 11' 30" W | 25.21    | 25.21   |
| 12   | N 53° 11' 30" W | 25.21    | 25.21   |
| 13   | N 53° 11' 30" W | 25.21    | 25.21   |
| 14   | N 53° 11' 30" W | 25.21    | 25.21   |
| 15   | N 53° 11' 30" W | 25.21    | 25.21   |
| 16   | N 53° 11' 30" W | 25.21    | 25.21   |
| 17   | N 53° 11' 30" W | 25.21    | 25.21   |
| 18   | N 53° 11' 30" W | 25.21    | 25.21   |
| 19   | N 53° 11' 30" W | 25.21    | 25.21   |
| 20   | N 53° 11' 30" W | 25.21    | 25.21   |
| 21   | N 53° 11' 30" W | 25.21    | 25.21   |
| 22   | N 53° 11' 30" W | 25.21    | 25.21   |
| 23   | N 53° 11' 30" W | 25.21    | 25.21   |
| 24   | N 53° 11' 30" W | 25.21    | 25.21   |
| 25   | N 53° 11' 30" W | 25.21    | 25.21   |
| 26   | N 53° 11' 30" W | 25.21    | 25.21   |
| 27   | N 53° 11' 30" W | 25.21    | 25.21   |
| 28   | N 53° 11' 30" W | 25.21    | 25.21   |
| 29   | N 53° 11' 30" W | 25.21    | 25.21   |
| 30   | N 53° 11' 30" W | 25.21    | 25.21   |
| 31   | N 53° 11' 30" W | 25.21    | 25.21   |
| 32   | N 53° 11' 30" W | 25.21    | 25.21   |
| 33   | N 53° 11' 30" W | 25.21    | 25.21   |
| 34   | N 53° 11' 30" W | 25.21    | 25.21   |
| 35   | N 53° 11' 30" W | 25.21    | 25.21   |
| 36   | N 53° 11' 30" W | 25.21    | 25.21   |
| 37   | N 53° 11' 30" W | 25.21    | 25.21   |
| 38   | N 53° 11' 30" W | 25.21    | 25.21   |
| 39   | N 53° 11' 30" W | 25.21    | 25.21   |
| 40   | N 53° 11' 30" W | 25.21    | 25.21   |
| 41   | N 53° 11' 30" W | 25.21    | 25.21   |
| 42   | N 53° 11' 30" W | 25.21    | 25.21   |
| 43   | N 53° 11' 30" W | 25.21    | 25.21   |
| 44   | N 53° 11' 30" W | 25.21    | 25.21   |
| 45   | N 53° 11' 30" W | 25.21    | 25.21   |
| 46   | N 53° 11' 30" W | 25.21    | 25.21   |
| 47   | N 53° 11' 30" W | 25.21    | 25.21   |
| 48   | N 53° 11' 30" W | 25.21    | 25.21   |
| 49   | N 53° 11' 30" W | 25.21    | 25.21   |
| 50   | N 53° 11' 30" W | 25.21    | 25.21   |
| 51   | N 53° 11' 30" W | 25.21    | 25.21   |
| 52   | N 53° 11' 30" W | 25.21    | 25.21   |
| 53   | N 53° 11' 30" W | 25.21    | 25.21   |
| 54   | N 53° 11' 30" W | 25.21    | 25.21   |
| 55   | N 53° 11' 30" W | 25.21    | 25.21   |
| 56   | N 53° 11' 30" W | 25.21    | 25.21   |
| 57   | N 53° 11' 30" W | 25.21    | 25.21   |
| 58   | N 53° 11' 30" W | 25.21    | 25.21   |
| 59   | N 53° 11' 30" W | 25.21    | 25.21   |
| 60   | N 53° 11' 30" W | 25.21    | 25.21   |
| 61   | N 53° 11' 30" W | 25.21    | 25.21   |
| 62   | N 53° 11' 30" W | 25.21    | 25.21   |
| 63   | N 53° 11' 30" W | 25.21    | 25.21   |
| 64   | N 53° 11' 30" W | 25.21    | 25.21   |
| 65   | N 53° 11' 30" W | 25.21    | 25.21   |
| 66   | N 53° 11' 30" W | 25.21    | 25.21   |
| 67   | N 53° 11' 30" W | 25.21    | 25.21   |
| 68   | N 53° 11' 30" W | 25.21    | 25.21   |
| 69   | N 53° 11' 30" W | 25.21    | 25.21   |
| 70   | N 53° 11' 30" W | 25.21    | 25.21   |
| 71   | N 53° 11' 30" W | 25.21    | 25.21   |
| 72   | N 53° 11' 30" W | 25.21    | 25.21   |
| 73   | N 53° 11' 30" W | 25.21    | 25.21   |
| 74   | N 53° 11' 30" W | 25.21    | 25.21   |
| 75   | N 53° 11' 30" W | 25.21    | 25.21   |
| 76   | N 53° 11' 30" W | 25.21    | 25.21   |
| 77   | N 53° 11' 30" W | 25.21    | 25.21   |
| 78   | N 53° 11' 30" W | 25.21    | 25.21   |
| 79   | N 53° 11' 30" W | 25.21    | 25.21   |
| 80   | N 53° 11' 30" W | 25.21    | 25.21   |
| 81   | N 53° 11' 30" W | 25.21    | 25.21   |
| 82   | N 53° 11' 30" W | 25.21    | 25.21   |
| 83   | N 53° 11' 30" W | 25.21    | 25.21   |
| 84   | N 53° 11' 30" W | 25.21    | 25.21   |
| 85   | N 53° 11' 30" W | 25.21    | 25.21   |
| 86   | N 53° 11' 30" W | 25.21    | 25.21   |
| 87   | N 53° 11' 30" W | 25.21    | 25.21   |
| 88   | N 53° 11' 30" W | 25.21    | 25.21   |
| 89   | N 53° 11' 30" W | 25.21    | 25.21   |
| 90   | N 53° 11' 30" W | 25.21    | 25.21   |
| 91   | N 53° 11' 30" W | 25.21    | 25.21   |
| 92   | N 53° 11' 30" W | 25.21    | 25.21   |
| 93   | N 53° 11' 30" W | 25.21    | 25.21   |
| 94   | N 53° 11' 30" W | 25.21    | 25.21   |
| 95   | N 53° 11' 30" W | 25.21    | 25.21   |
| 96   | N 53° 11' 30" W | 25.21    | 25.21   |
| 97   | N 53° 11' 30" W | 25.21    | 25.21   |
| 98   | N 53° 11' 30" W | 25.21    | 25.21   |
| 99   | N 53° 11' 30" W | 25.21    | 25.21   |
| 100  | N 53° 11' 30" W | 25.21    | 25.21   |



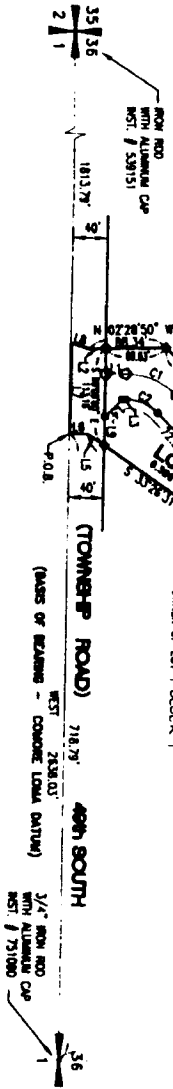
**LEGEND & NOTES**

- 5/8" x 3/8" Steel Rebar found with plastic cap stamped L.S. 4932
- 1/2" x 3/8" Steel Rebar found with plastic cap stamped L.S. 4932
- 1/2" Steel Rebar found with plastic cap stamped L.S. 4937

Notes: Safety concerns include use of these.

First American Title Company will be conducting an abstract on the ground improvement drawings on file in the office of the County Engineer and Planning Director and accepted recording. Property owner will be notified by mail and if they have comments and accepted recording is to be approved.

Lot shown on this plan are included in a platting project and will be recorded for the purposes and convenience.



**First American Title Company**  
 Idaho Falls, Idaho 83404

This sketch is made solely for the purpose of assisting in locating the premises. The company assumes no liability for alleged loss or damage which may result from reliance on this map.