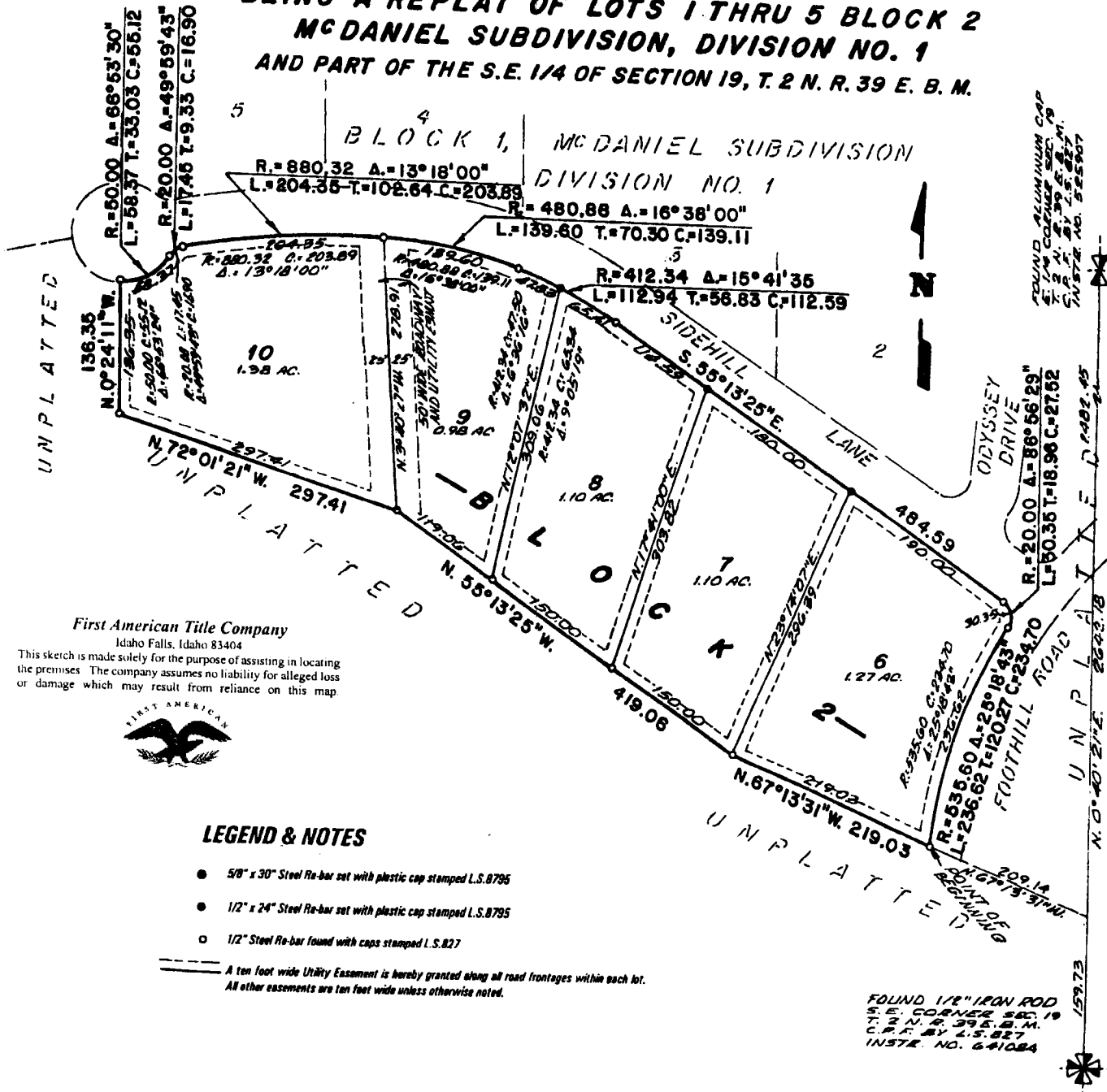


FIRST AMENDED PLAT OF THE MCDANIEL SUBDIVISION DIVISION NO. 1 BONNEVILLE COUNTY, IDAHO

BEING A REPLAT OF LOTS 1 THRU 5 BLOCK 2
MCDANIEL SUBDIVISION, DIVISION NO. 1
AND PART OF THE S.E. 1/4 OF SECTION 19, T. 2 N. R. 39 E. B. M.



First American Title Company
Idaho Falls, Idaho 83404

This sketch is made solely for the purpose of assisting in locating the premises. The company assumes no liability for alleged loss or damage which may result from reliance on this map.



LEGEND & NOTES

- 5/8" x 30" Steel Re-bar set with plastic cap stamped L.S. 8795
- 1/2" x 24" Steel Re-bar set with plastic cap stamped L.S. 8795
- 1/2" Steel Re-bar found with caps stamped L.S. 827

A ten foot wide Utility Easement is hereby granted along all road frontages within each lot.
All other easements are ten foot wide unless otherwise noted.

FOUND 1/2" IRON ROD
S. E. CORNER SEC. 19
T. 2 N. R. 39 E. B. M.
C.R.F. BY L.S. 827
INSTR. NO. 641084