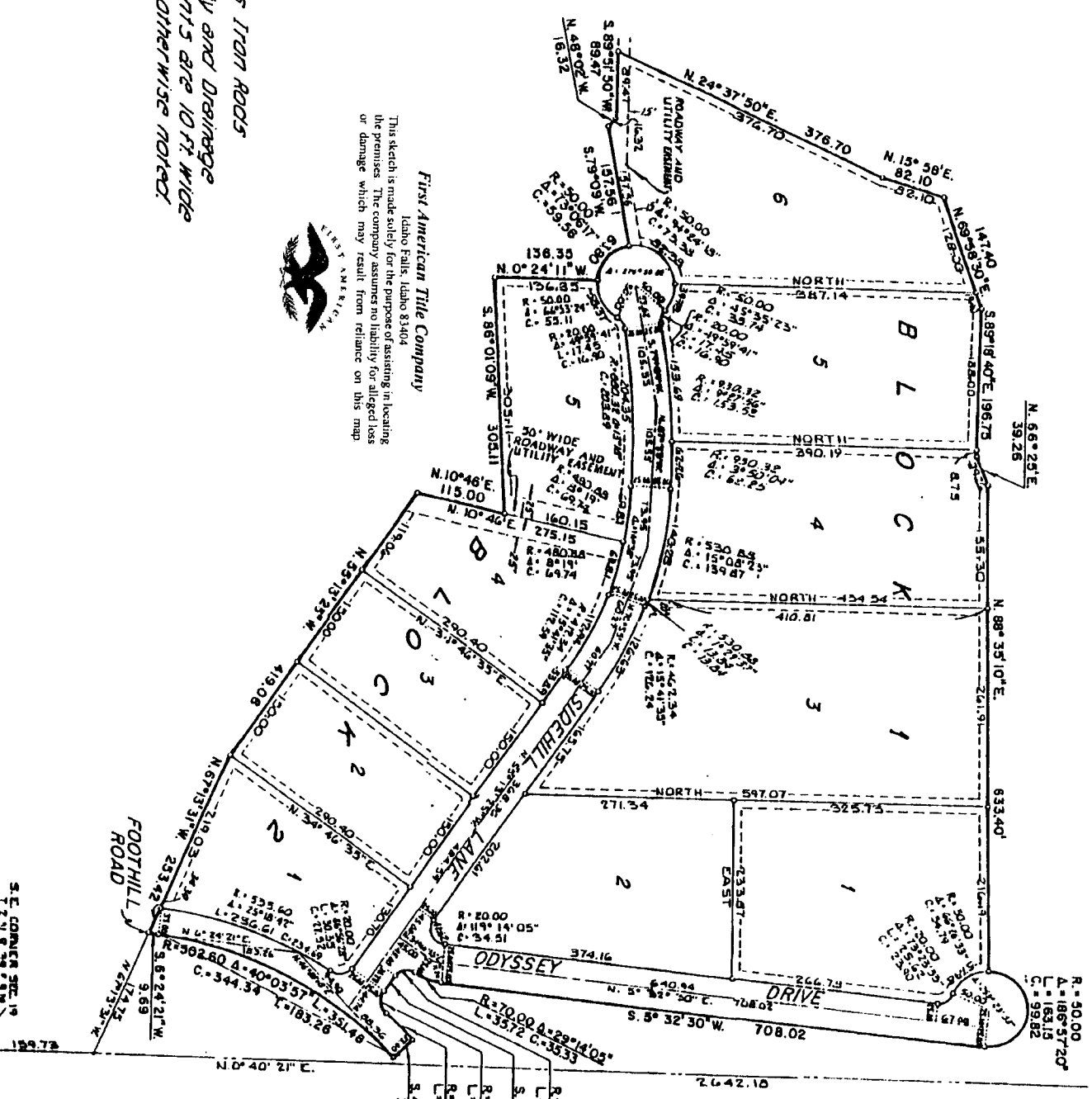


# MR. DANIEL SWBDIVISION

A PORTION OF THE S.E. 1/4 OF SECTION 19 T. 2 N. R. 39 E. B. M.  
 BONNEVILLE COUNTY, IDAHO  
 DIVISION NO. 1  
 ELLSWORTH ENGINEERING, INC.  
 IDAHO FALLS, IDAHO

E 1/4 CORNER SEC. 19  
 T. 2 N. R. 39 E. B. M.



First American Title Company  
 Idaho Falls, Idaho 83404

This sketch is made solely for the purpose of assisting in locating the premises. The company assumes no liability for alleged loss or damage which may result from reliance on this map.



## NOTES

Denotes Iron Roads  
 All Utility and Draining  
 Easements are 10 ft wide  
 Unless otherwise noted

S.E. CORNER SEC. 19  
 T. 2 N. R. 39 E. B. M.