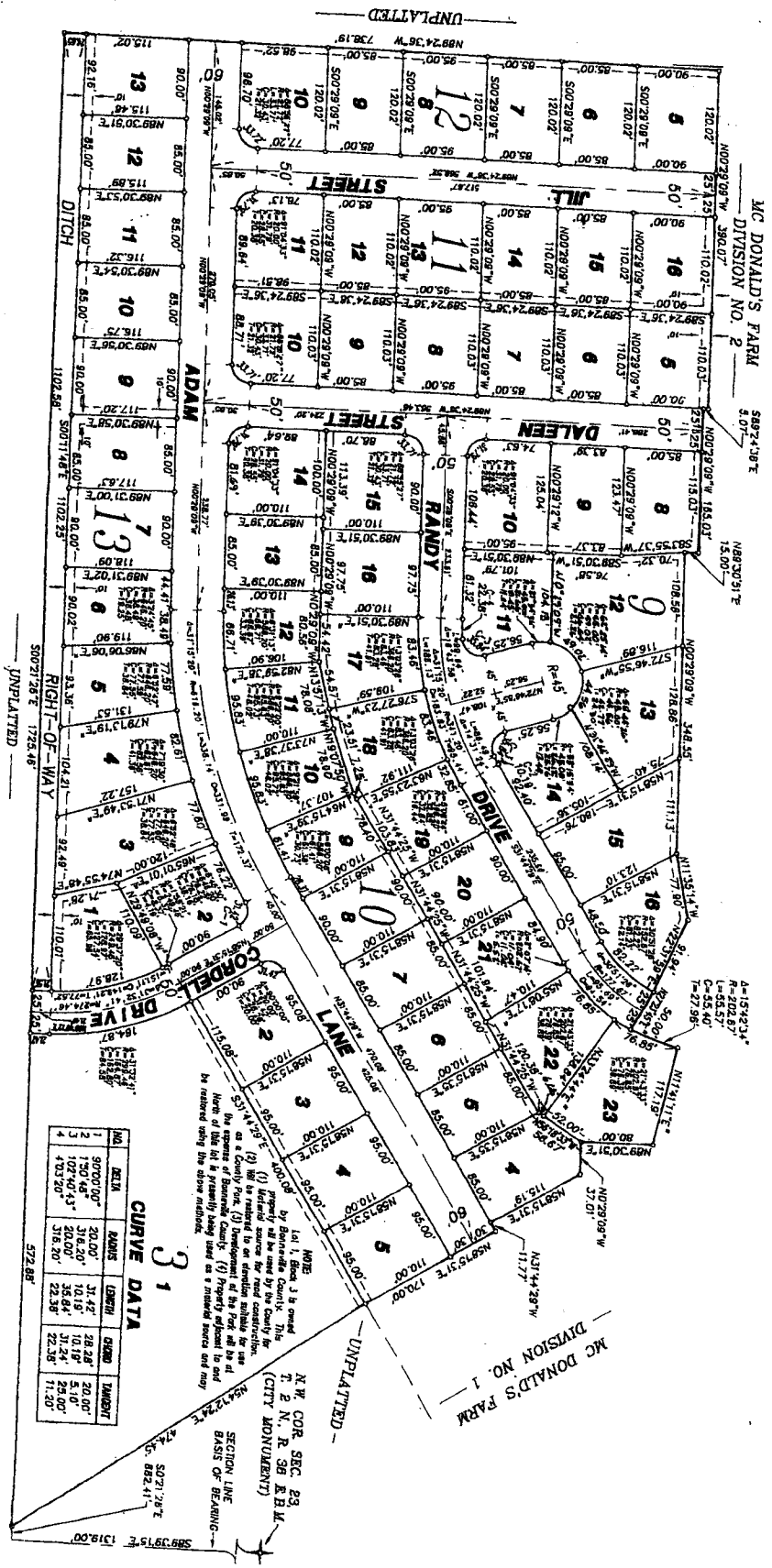


MC DONALD'S FARM

DIVISION NO. 3

PART OF THE WEST 1/2 OF THE N.W. 1/4 OF SECTION 23, T. 2 N., R. 38 E.B.M.



NOTES

Indicates a 1/2" x 24" iron rod placed with a yellow plastic cap marked L.S. 760.

utility easements are 8' through each lot unless otherwise shown.

a 10' wide utility easement is reserved along the street side of all lots.

All street and easement dedications reserve full rights to Falls Water Co. Inc. to construct, maintain and service their utilities.

Water Const. Co. is granted the control of right of occupancy and after assignment by Wilcox, these easements are for water, tel., teleable, gas and power.

CURVE DATA

NO.	BEHA.	RADIUS	CHORD	CHORD	ARC	PERCENT
1	9000.00"	20.00'	31.42'	28.28'	20.00'	20.00%
2	1500.00"	12.50'	15.71'	14.14'	10.00'	10.00%
3	1027.40"	20.00'	28.28'	25.13'	18.00'	18.00%
4	403.20"	37.50'	52.38'	47.12'	30.00'	30.00%

NOTE: Lot 1, Block 3 is owned by Bonnevill County. This property is not to be divided by the County for a County Park. (2) Development of the Plat will be at the North of the Plat of Bonnevill County. (3) Property adjacent to and bounded by the above plat.

N.W. COR. SEC. 23
T. 2 N., R. 38 E.B.M.
(CITY MONUMENT)

SECTION LINE
BASIS OF BEARING
S07°28' E
474.5' 882.41'

MC DONALD'S FARM
DIVISION NO. 1

UNPLATTED

First American Title Company
Idaho Falls, Idaho 83401

While this is a photographic reproduction of the recorded plat, the Company assumes no liability for variations, if any, with a re-survey.