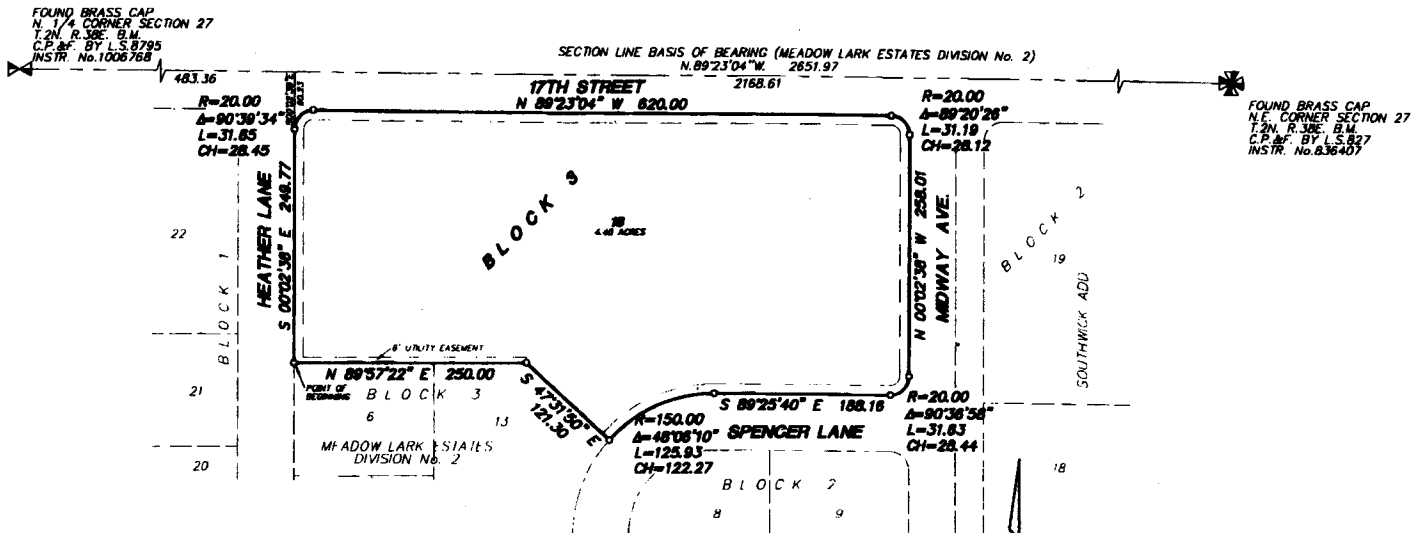


**FIRST AMENDED PLAT OF THE
MEADOW LARK ESTATES
DIVISION NO. 2
CITY OF AMMON, BONNEVILLE COUNTY, IDAHO**
BEING A REPLAT OF LOTS 7-12 BLOCK 3 MEADOW LARK ESTATES DIVISION No. 2
PART OF THE W. 1/2, NE. 1/4 SECTION 27 T.2N. R.38E-B.M.



First American Title Company
Idaho Falls, Idaho 83404
While this is a photographic reproduction of the recorded plat, the Company assumes no liability for variations, if any, with a re-survey.

LEGEND & NOTES

- 5/8" x 30" Steel rebar set with plastic cap stamped L.S. 8795
- 1/2" x 24" Steel rebar set with plastic cap stamped L.S. 8795
- 5/8" Steel rebar found with caps stamped L.S. unless noted otherwise
- 1/2" Steel rebar found with caps stamped L.S. unless noted otherwise

A 10 foot wide Utility Easement is hereby granted/reserved along all road frontages within each lot. All other utility easements are as note.