

MEADOW LARK ESTATES

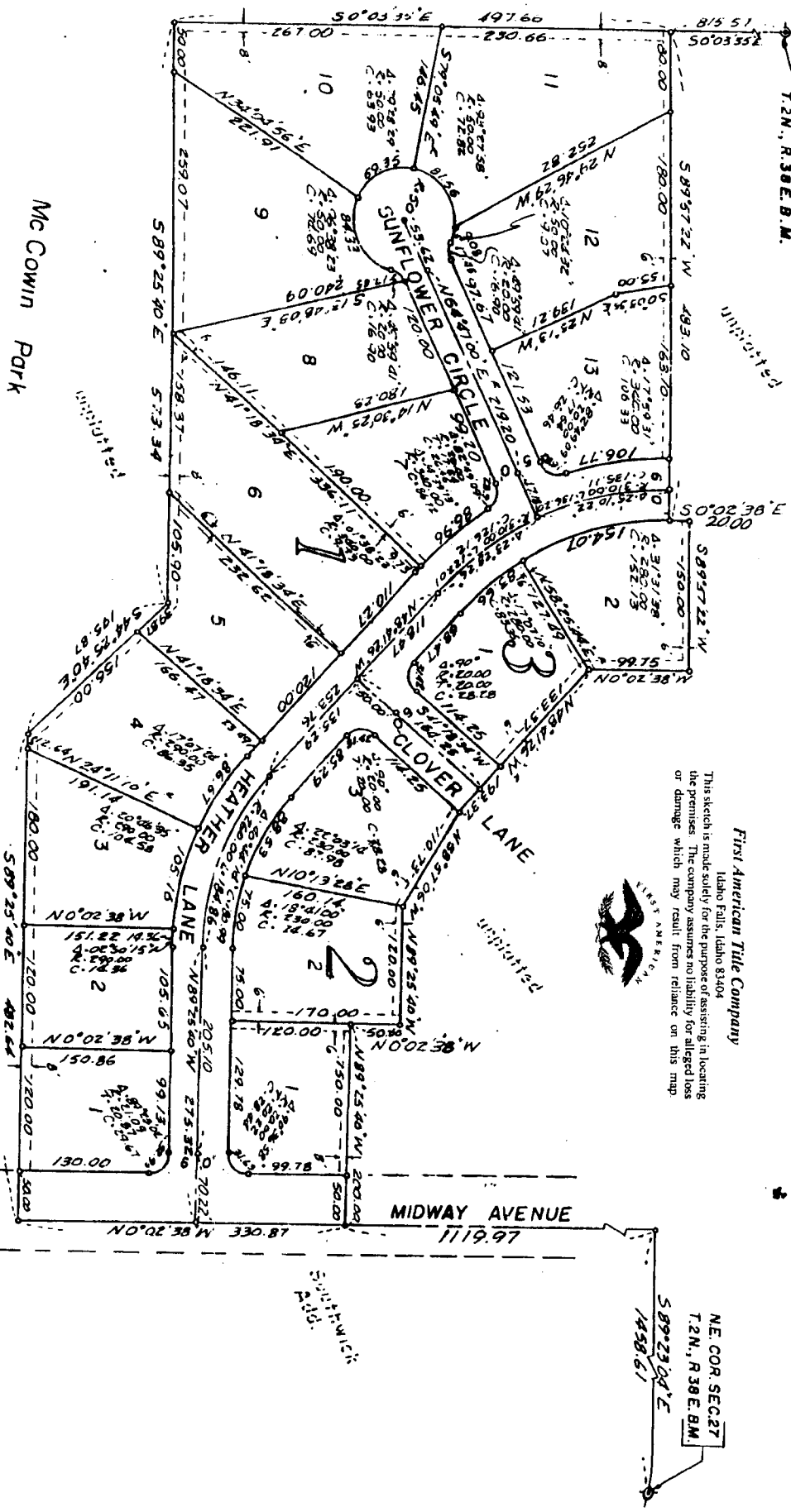
DIVISION NO. 1

CITY of AMMON, BONNEVILLE COUNTY, IDAHO
 Part of W. 1/2, NW. 1/4 Sec. 26 T. 2N., R. 38E. B.M.

First American Title Company

Idaho Falls, Idaho 83404

This sketch is made solely for the purpose of assisting in locating the premises. The company assumes no liability for alleged loss or damage which may result from reliance on this map.



Notes All easements are shown through each lot unless shown otherwise.

NE COR. SEC. 27
 T. 2N., R. 38E. B.M.

589° 23' 04" E
 1438.61

MIDWAY AVENUE
 69111

Mc Cowin Park