

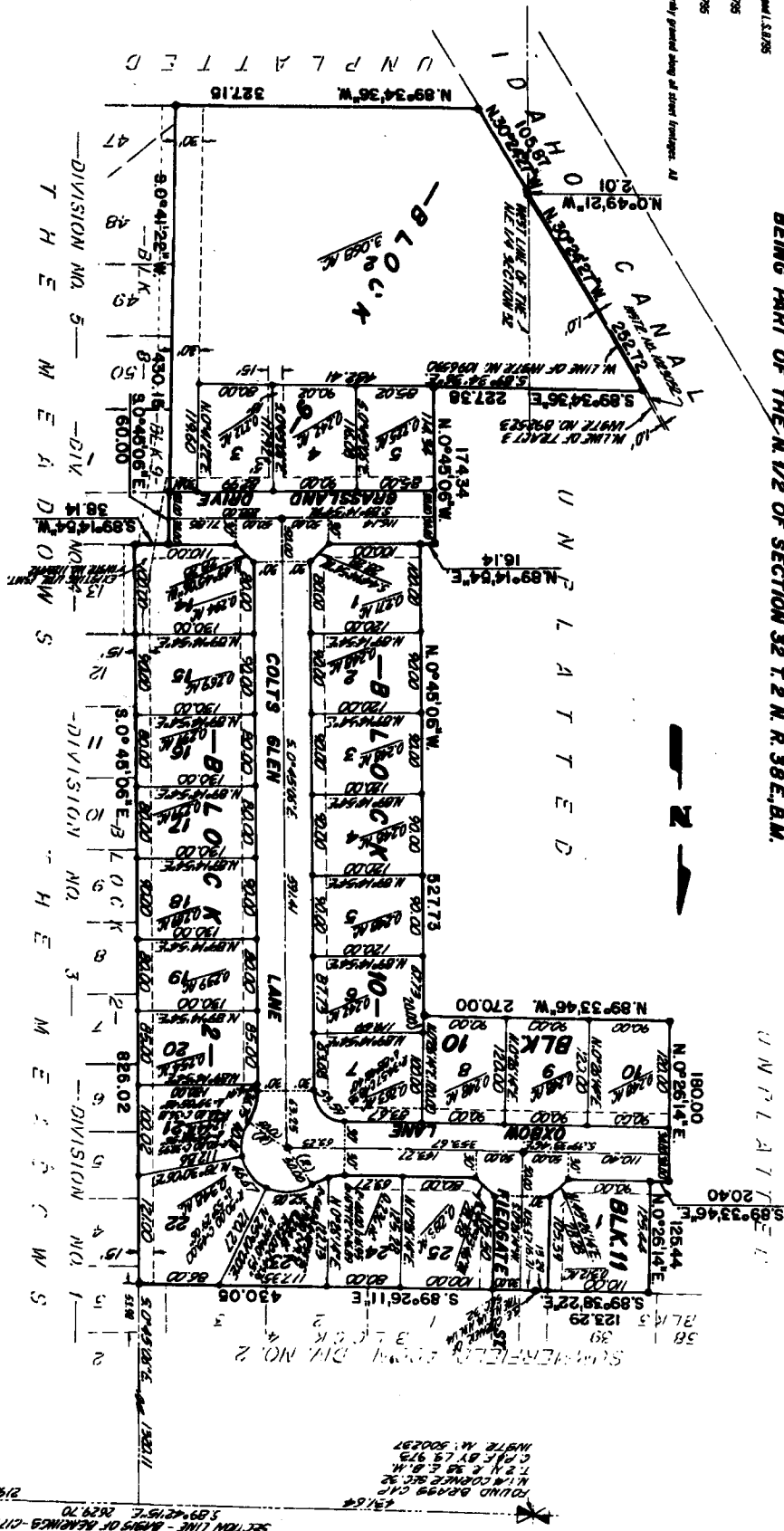
**LEGEND & NOTES**

- 3/4" x 3/4" Small Blue Ink with purple cap stamped L.S. 8795
- 1/2" x 2 1/2" Small Blue Ink with purple cap stamped L.S. 8795
- 3/4" Small Blue Ink with purple cap stamped L.S. 8795
- 1/2" Small Blue Ink with purple cap stamped L.S. 8795

A number four wide pencil utility easement is hereby granted along all street frontages. All public utility easements are as shown.

First American Title Company  
 Idaho Falls, Idaho 83404  
 While this is a photographic reproduction of the recorded plat, the Company assumes no liability for variations, if any, with a re-survey.

**THE MEADOWS**  
**DIVISION NO. 6**  
 AN ADDITION TO THE CITY OF IDAHO FALLS,  
 BONNEVILLE COUNTY, IDAHO  
 BEING PART OF THE N. 1/2 OF SECTION 32 T. 2 N. R. 38 E., B.M.



SECTION LINE - BOUNDS OF MEADOWS-CITY DRAIN (PRE 2004)  
 5.89° 21' 57\"/>

ROUND BEARS CIV  
 N. 1/4 CORNER SEC 32  
 T. 2 N. & 38 E. B.M.  
 C. 1/4 BY 13.973  
 2. 1/4 BY 13.973  
 1. 1/4 BY 13.973  
 ROUND BEARS CIV  
 WHITE M. 500236

