

THE MEADOWS DIVISION NO. 7

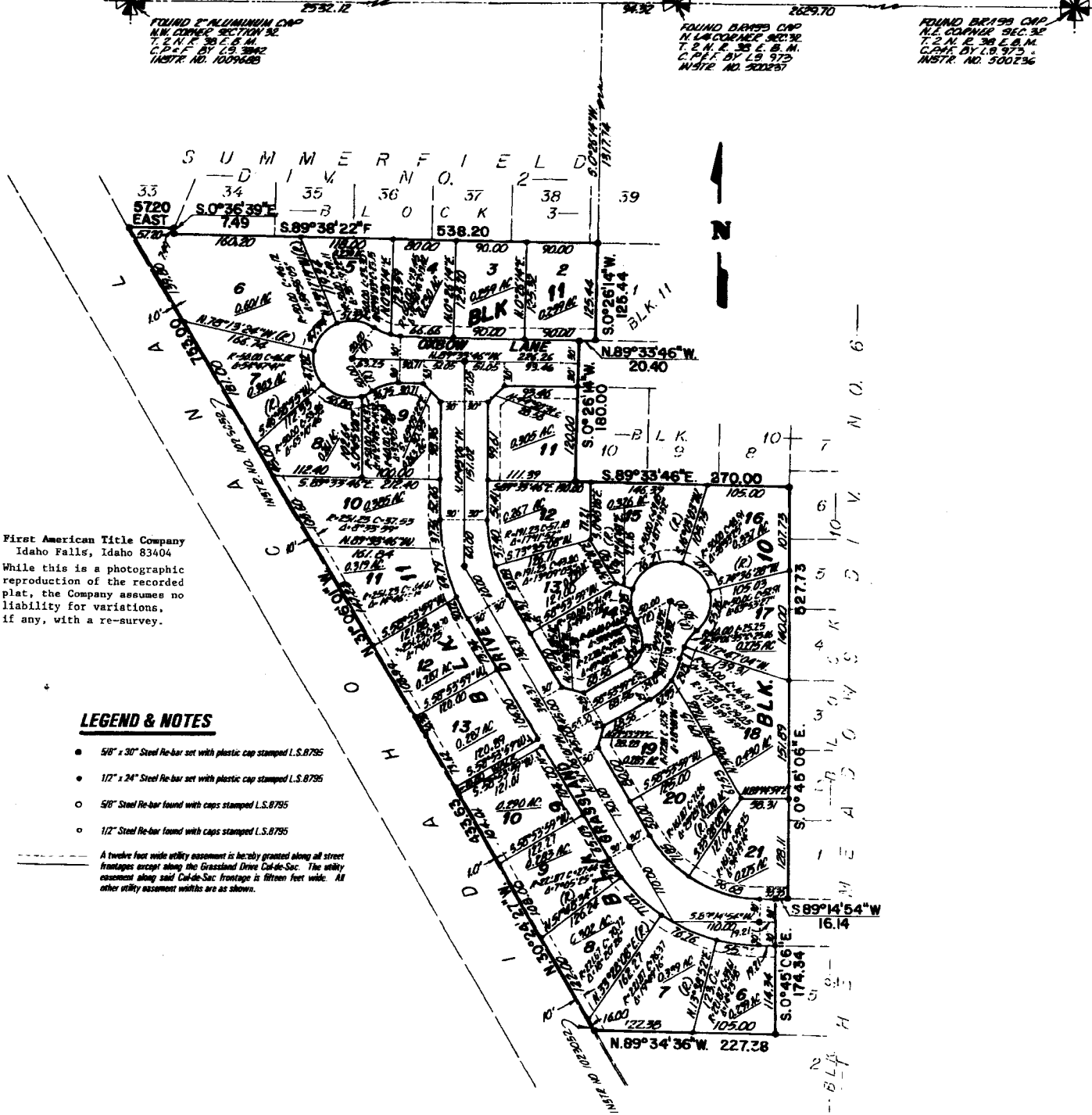
AN ADDITION TO THE CITY OF IDAHO FALLS,
BONNEVILLE COUNTY, IDAHO
BEING PART OF THE N.1/2 OF SECTION 32, T. 2 N., R. 38 E., B. M.

SECTION LINE - S. 89° 42' 15" E. 5256.14 - BASIS OF BEARINGS CITY DATUM (PRE 2004)

FOUND 5" ALUMINUM CAP
N.W. CORNER SECTION 32
T. 2 N. R. 38 E. B. M.
C.P. & F. BY C.S. 3002
INSTR. NO. 1009628

FOUND BRASS CAP
N.E. CORNER SECTION 32
T. 2 N. R. 38 E. B. M.
C.P. & F. BY L.B. 973
INSTR. NO. 500236

FOUND BRASS CAP
N.E. CORNER SECTION 32
T. 2 N. R. 38 E. B. M.
C.P. & F. BY L.B. 973
INSTR. NO. 500236



First American Title Company
Idaho Falls, Idaho 83404
While this is a photographic reproduction of the recorded plat, the Company assumes no liability for variations, if any, with a re-survey.

LEGEND & NOTES

- 5/8" x 30" Steel Re-bar set with plastic cap stamped L.S. 8795
- 1/2" x 24" Steel Re-bar set with plastic cap stamped L.S. 8795
- 5/8" Steel Re-bar found with caps stamped L.S. 8795
- 1/2" Steel Re-bar found with caps stamped L.S. 8795

A twelve foot wide utility easement is hereby granted along all street frontages except along the Grassland Drive Cal-de-Sac. The utility easement along said Cal-de-Sac frontage is fifteen feet wide. All other utility easement widths are as shown.