

THE MEADOWS

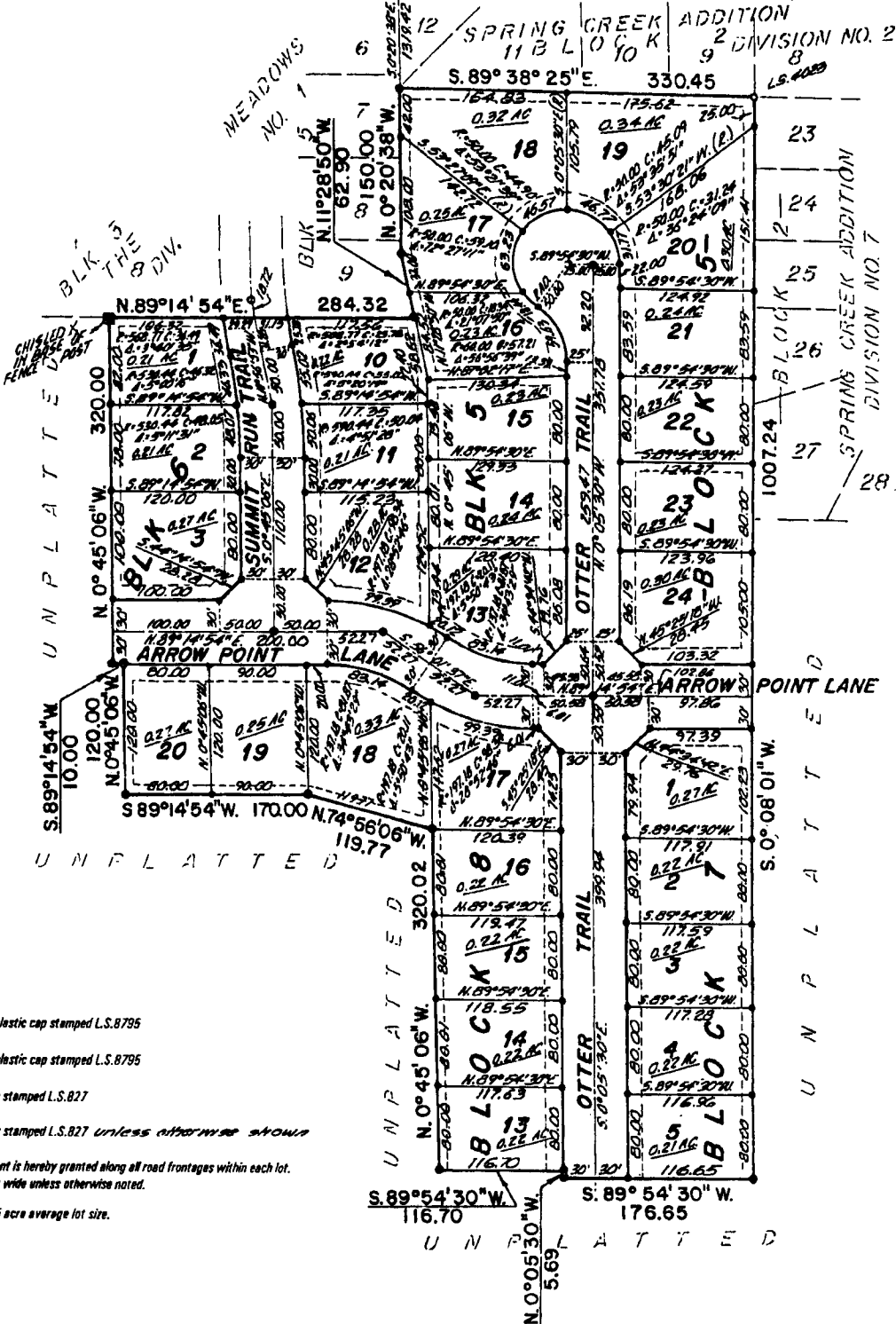
N. 89° 42' 15" W. 1314.85
SECTION LINE - BASIS OF BEARINGS

2629.70
1314.85 CITY DATUM

DIVISION NO. 2

AN ADDITION TO THE CITY OF IDAHO FALLS,
BONNEVILLE COUNTY, IDAHO

BEING PART OF THE N.E. 1/4 OF SECTION 32, T. 2 N., R. 38 E., B. M.



LEGEND & NOTES

- 5/8" x 30" Steel Re-bar set with plastic cap stamped L.S. 8795
- 1/2" x 24" Steel Re-bar set with plastic cap stamped L.S. 8795
- 5/8" Steel Re-bar found with caps stamped L.S. 827
- 1/2" Steel Re-bar found with caps stamped L.S. 827 unless otherwise shown

A fifteen foot wide Utility Easement is hereby granted along all road frontages within each lot.
All other easements are eight feet wide unless otherwise noted.

This addition consists of 31 lots, 0.25 acre average lot size.

First American Title Company

Idaho Falls, Idaho 83404

This sketch is made solely for the purpose of assisting in locating the premises. The company assumes no liability for alleged loss or damage which may result from reliance on this map.

