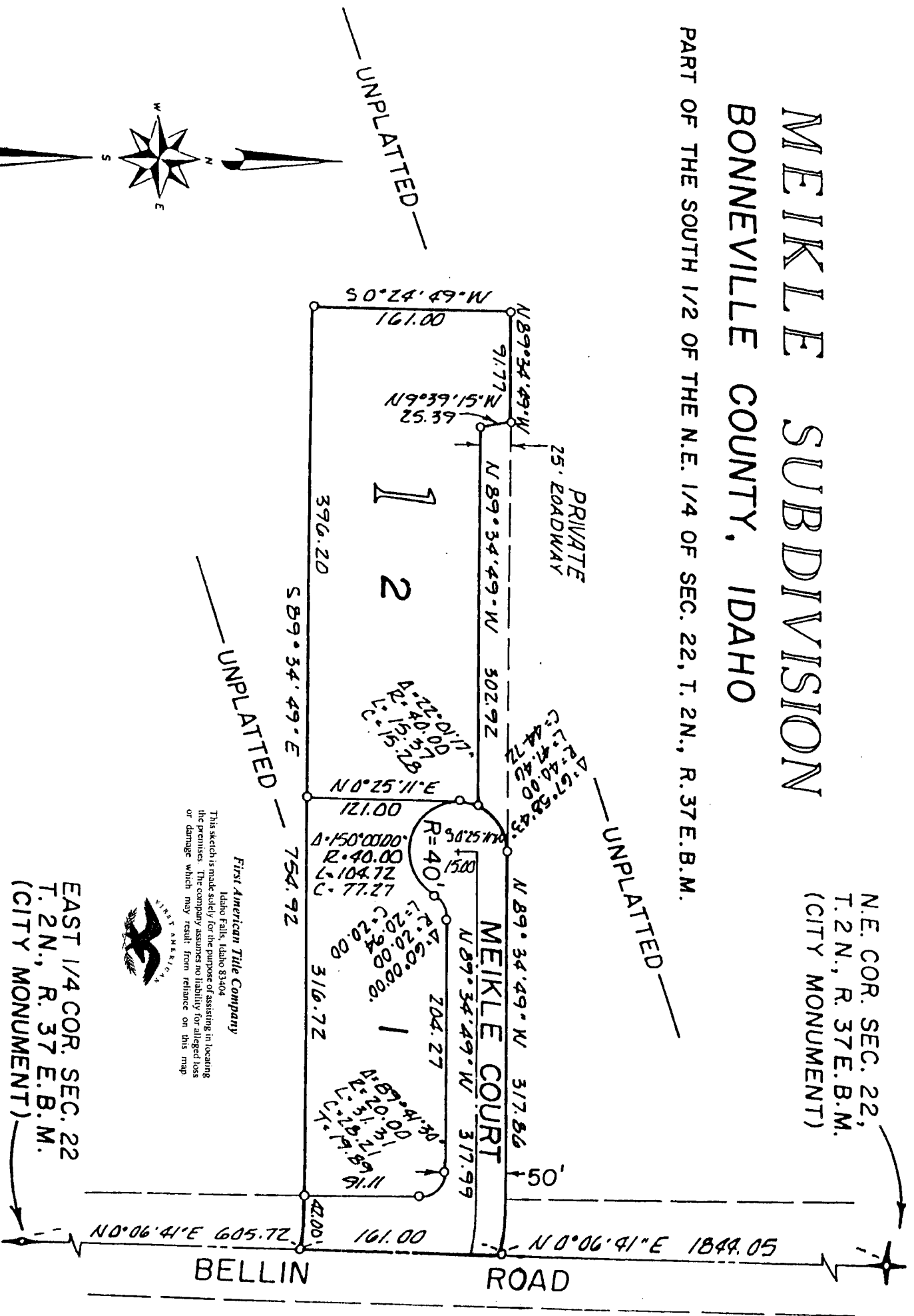


MEIKLE SUBDIVISION BONNEVILLE COUNTY, IDAHO

N.E. COR. SEC. 22,
T. 2 N., R. 37 E. B.M.
(CITY MONUMENT)

PART OF THE SOUTH 1/2 OF THE N.E. 1/4 OF SEC. 22, T. 2 N., R. 37 E. B.M.



First American Title Company
 Idaho Falls, Idaho 83404
 This sketch is made solely for the purpose of assisting in locating the premises. The company assumes no liability for alleged loss or damage which may result from reliance on this map.



EAST 1/4 COR. SEC. 22
 T. 2 N., R. 37 E. B.M.
 (CITY MONUMENT)