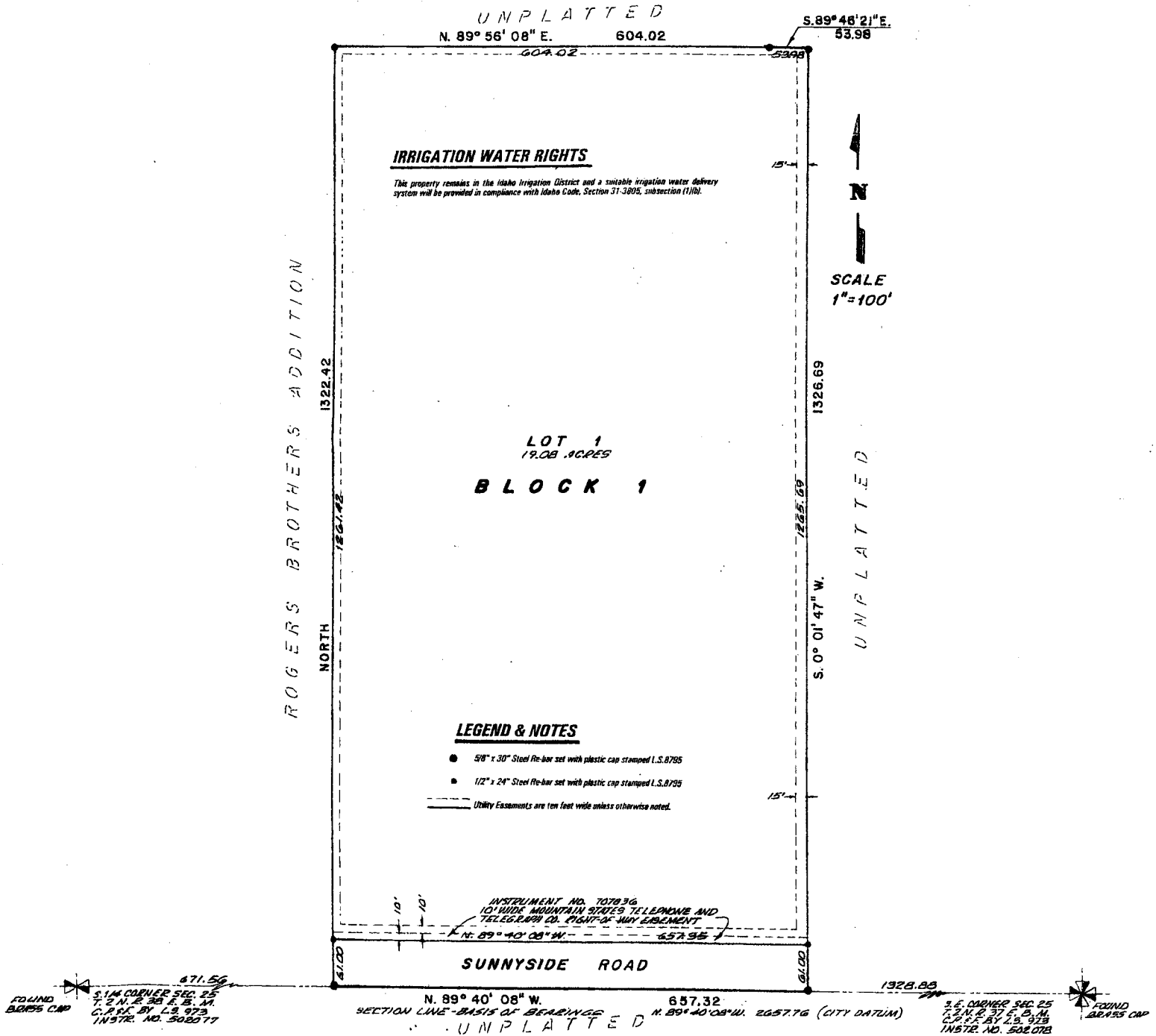


# MELALEUCA ADDITION DIVISION NO. 1

TO THE CITY OF IDAHO FALLS, BONNEVILLE COUNTY, IDAHO  
BEING PART OF THE E. 1/2 S.W. 1/4 S.E. 1/4 SECTION 25, T. 2 N., R. 37 E., B.M.



While this is a photographic reproduction of the recorded plat, the Company assumes no liability for variations, if any, with a re-survey.

**First American Title Company**  
Idaho Falls, Idaho 83401