

MELBOURNE PARK ADDITION, Div. No. 8

A Replat of Lots 17 thru 23, Block 16 and Lots 3 thru 9, Block 18

TO THE CITY OF IDAHO FALLS, BONNEVILLE COUNTY, IDAHO
 A PORTION OF SECTION 21, T. 2 N., R. 38 E. 8.M.

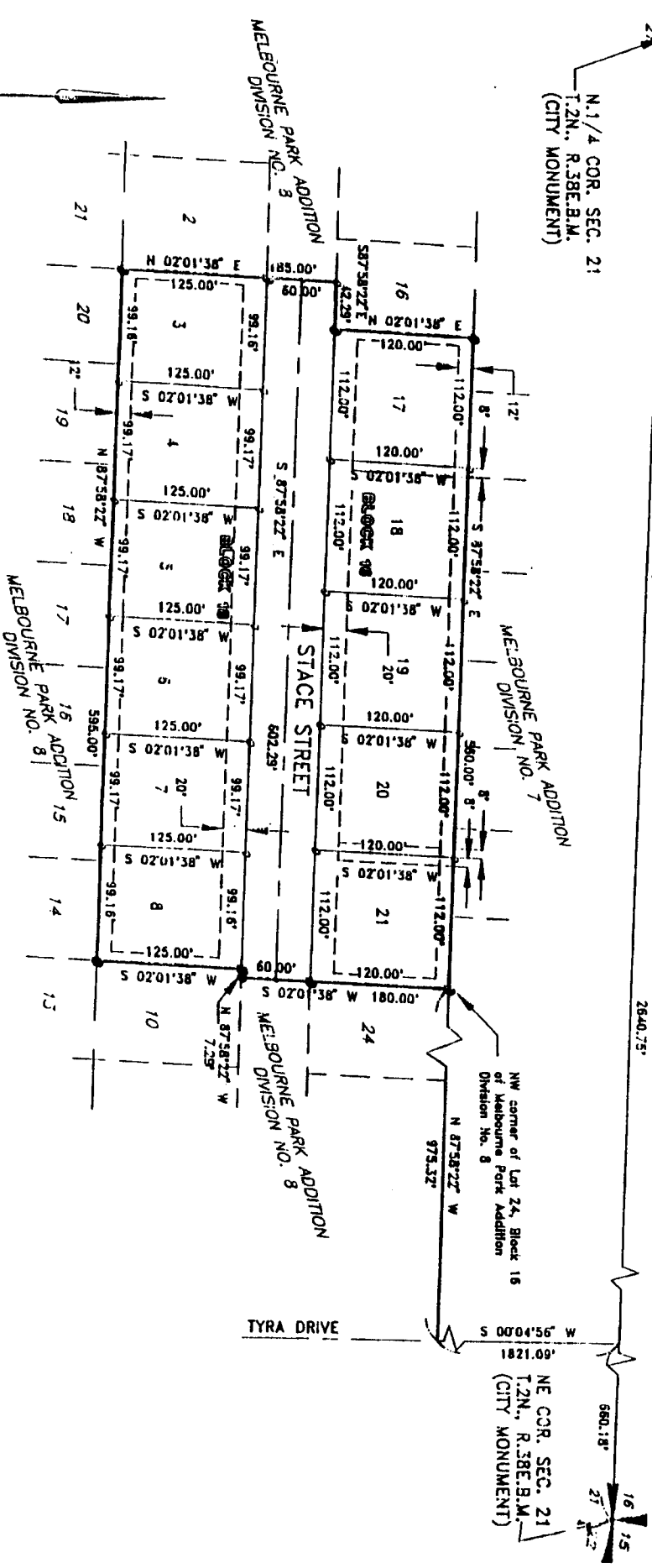
First American Title Company

Idaho Falls, Idaho 83404

This sketch is made solely for the purpose of assisting in locating the premises. The company assumes no liability for alleged loss or damage which may result from reliance on this map.



BASIS OF BEARING - CITY OF IDAHO FALLS
 S 87°58'22" E



N. 1/4 COR. SEC. 21
 T. 2N., R. 38E. 8.M.
 (CITY MONUMENT)

NW corner of Lot 24, Block 16
 of Melbourne Park Addition
 Division No. 8

NE COR. SEC. 21
 T. 2N., R. 38E. 8.M.
 (CITY MONUMENT)

