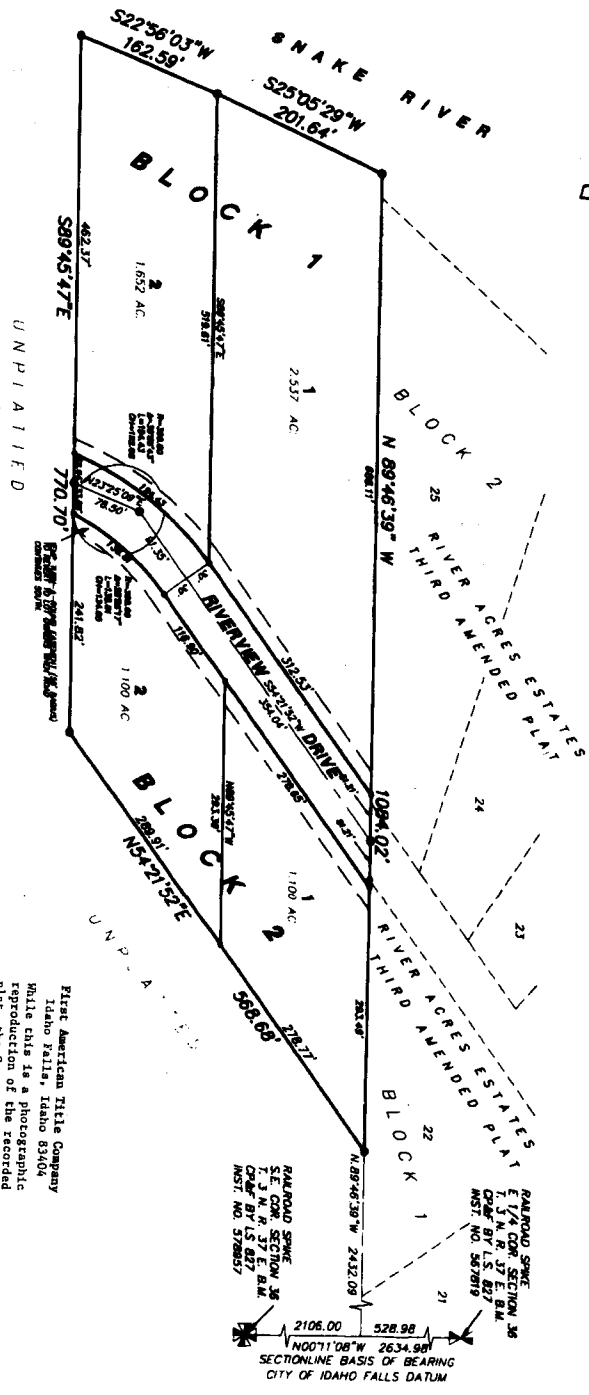
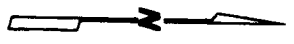


# MICKELSEN ACRES

## DIVISION NO. 1

BONNEVILLE COUNTY, IDAHO  
 BEING A PART OF GOVERNMENT LOT 9 AND  
 THE NW 1/4 OF THE SE 1/4 OF SECTION 36,  
 TOWNSHIP 3 NORTH, RANGE 37 EAST OF THE BOISE MERIDIAN



First American Title Company  
 Idaho Falls, Idaho 83404  
 While this is a photographic  
 reproduction of the recorded  
 plat, the Company assumes no  
 liability for variations,  
 if any, with a re-survey.

### LEGEND & NOTES

- 5/8" x 3/8" Steel rebar set with plastic cap stamped L.S. 8785
- 1/2" x 2" Steel rebar set with plastic cap stamped L.S. 8785
- 1/2" Steel rebar buried with no cap

A 15 foot wide Utility Easement is hereby reserved along all road frontages within each lot.  
 The division contains 4 lots (1.60 acres average lot size).  
 Bonneville County will not maintain roads until removed to County Standards and officially approved and accepted.  
 Maintenance of roads and private accesses is the responsibility of the lot owner.  
 Drainage swales (gullies), private driveways and sidewalk approaches will be constructed and maintained with the correct cross-section as shown on the approved improvement drawings on file in the office of the County Engineer and Mountain River Engineering.  
 Irrigation ditch easements (NOT SHOWN) are reserved and confined over existing ditches, wide enough to maintain the ditch and any other water carrying property downstream shall be kept open to flow.  
 According to the FEASIBILITY REPORT, Bonneville County Community Plan No. 180277, 0805C, effective November 4, 1981, a portion of this subdivision lies in Zone C or zone of narrow flooding. The approximate 50 feet of the West side of Lot 1 and 2, Block 1 lies in Zone A, some of 100 feet flood (base flood elevation) and flood hazard factors are not determined.  
 The steel rebar shown along the river are witness corners placed in a stable location on the bank of said river. The true lot corners are located on the mean high water line of the river on an extension of the side lot lines through said witness corners. Bearings and distances are shown along the witness corner lines and are referred to as true surveyed lines.