

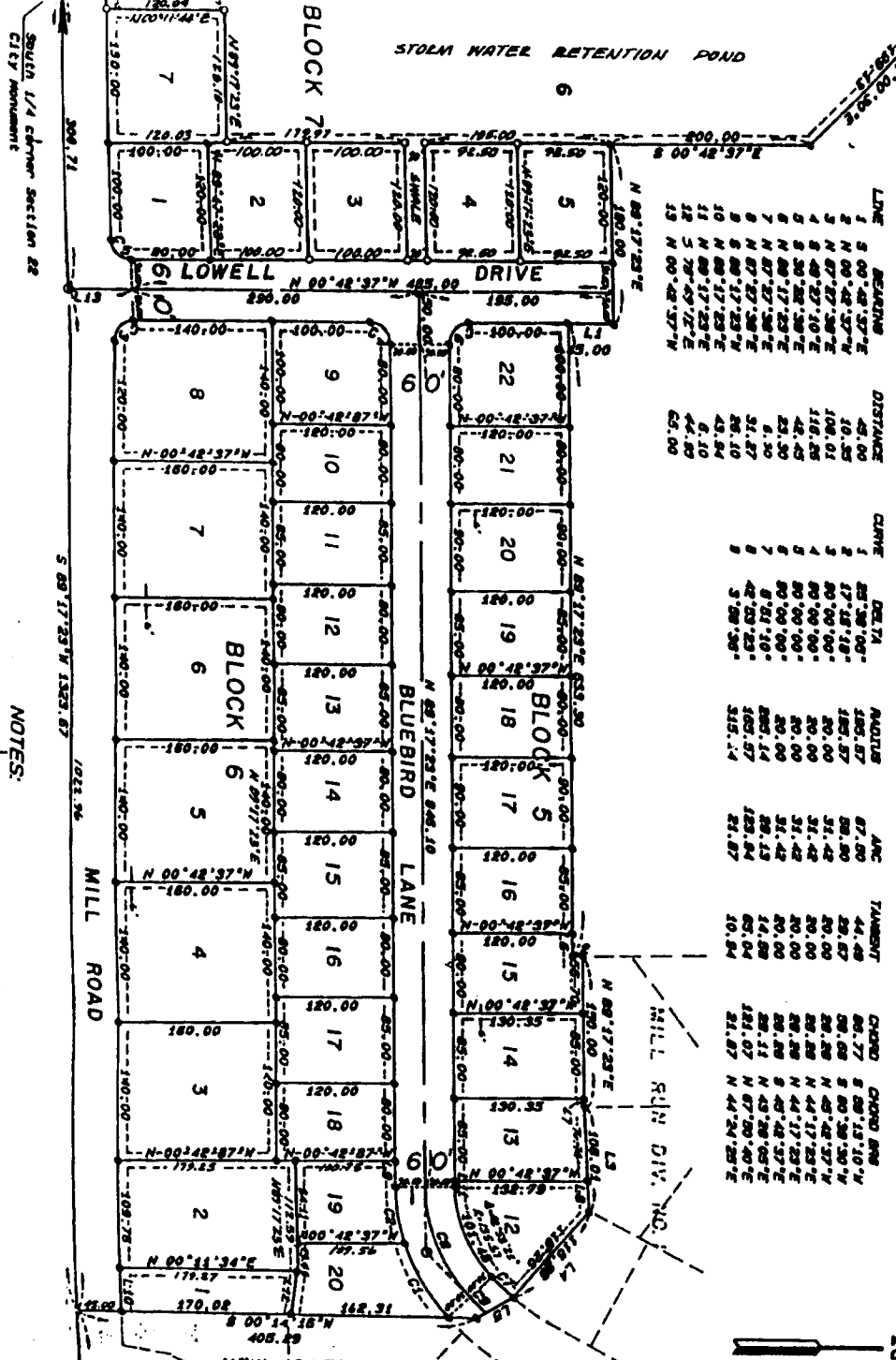
CENTER OF SECTION 22 CITY AMMUNITION

MILL RUN

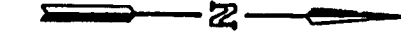
DIVISION NO. 2

AN ADDITION TO THE CITY OF IDAHO FALLS, BONNEVILLE COUNTY, IDAHO
 A PORTION OF THE S.E. 1/4 OF SECTION 22 T. 2N., R. 37E. B.M.

LINE	BEARING	DISTANCE	CURVE	DEG. TA.	RADIUS	ARC	THUMBST.	CHORD	CHORD BEG.
1	S 00° 48' 37" E	45.00	1	83° 38' 00"	185.87	87.00	44.48	86.77	S 88° 13' 10" W
2	N 00° 48' 37" W	10.25	2	17° 14' 18"	185.87	88.00	52.67	86.77	S 88° 13' 10" W
3	N 87° 27' 38" E	108.01	3	90° 10' 00"	20.00	31.42	20.00	86.77	N 43° 42' 37" W
4	S 80° 17' 23" E	116.85	4	80° 10' 00"	20.00	31.42	20.00	86.77	N 44° 17' 23" E
5	S 30° 28' 13" E	42.45	5	80° 10' 00"	20.00	31.42	20.00	86.77	N 44° 17' 23" E
6	N 88° 17' 23" E	25.30	6	80° 10' 00"	20.00	31.42	20.00	86.77	N 44° 17' 23" E
7	N 87° 27' 38" E	81.30	7	80° 10' 00"	20.00	31.42	20.00	86.77	N 44° 17' 23" E
8	N 87° 27' 38" E	31.87	8	42° 33' 23"	160.57	89.13	14.88	86.77	N 43° 28' 02" E
9	S 88° 17' 23" E	43.84	9	3° 28' 36"	315.14	123.84	10.84	86.77	N 44° 24' 28" E
10	N 88° 17' 23" E	43.84						86.77	N 44° 24' 28" E
11	N 88° 17' 23" E	43.84						86.77	N 44° 24' 28" E
12	S 78° 47' 12" E	44.80						86.77	N 44° 24' 28" E
13	N 00° 48' 37" W	65.00						86.77	N 44° 24' 28" E



NOTES:
 Designations 1/2" = 1" from plan.



First American Title Company
 Idaho Falls, Idaho 83404
 This sketch is made solely for the purpose of assisting in locating the premises. The company assumes no liability for alleged loss or damage which may result from reliance on this map.

S.E. CORNER SECTION 22
 CITY AMMUNITION

SOUTH 1/4 CORNER SECTION 22
 CITY AMMUNITION