

CONTINUE OF SEC. 22
T. 24, E. 37 S. M.

AN ADDITION TO THE CITY OF IDAHO FALLS, BONNEVILLE COUNTY, IDAHO
A PORTION OF THE S.E. 1/4 OF SECTION 22, TOWNSHIP 2 NORTH, RANGE 37 EAST B.M.

MILL RUN DIVISION NO. 5

First American Title Company

Idaho Falls, Idaho 83404

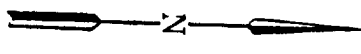
This sketch is made solely for the purpose of assisting in locating the premises. The company assumes no liability for alleged loss or damage which may result from reliance on this map.



CLAVE	DEL'TA	ACRUTUS	ARC	TAMBERT	CHORO	CHORD BNG
1	35.05.48"	60.00	36.75	18.57	36.18	5.73.08.43"E
2	34.08.55"	50.00	28.60	18.98	29.36	5.72.41.16"E
3	45.28.27"	50.00	38.68	20.85	38.65	N 67.30.02"E
4	45.28.27"	50.00	38.68	18.98	29.36	N 22.01.36"E
5	34.08.55"	50.00	28.60	18.98	29.36	N 17.47.05"W
6	35.05.48"	60.00	36.75	18.57	36.18	N 17.18.38"W
7	89.03.07"	60.00	31.42	18.18	70.12	S 44.45.49"W
8	90.00.00"	60.00	31.42	18.18	28.28	S 45.14.16"W
9	90.00.00"	60.00	31.42	20.00	28.28	S 44.45.44"E

UNPLATTED

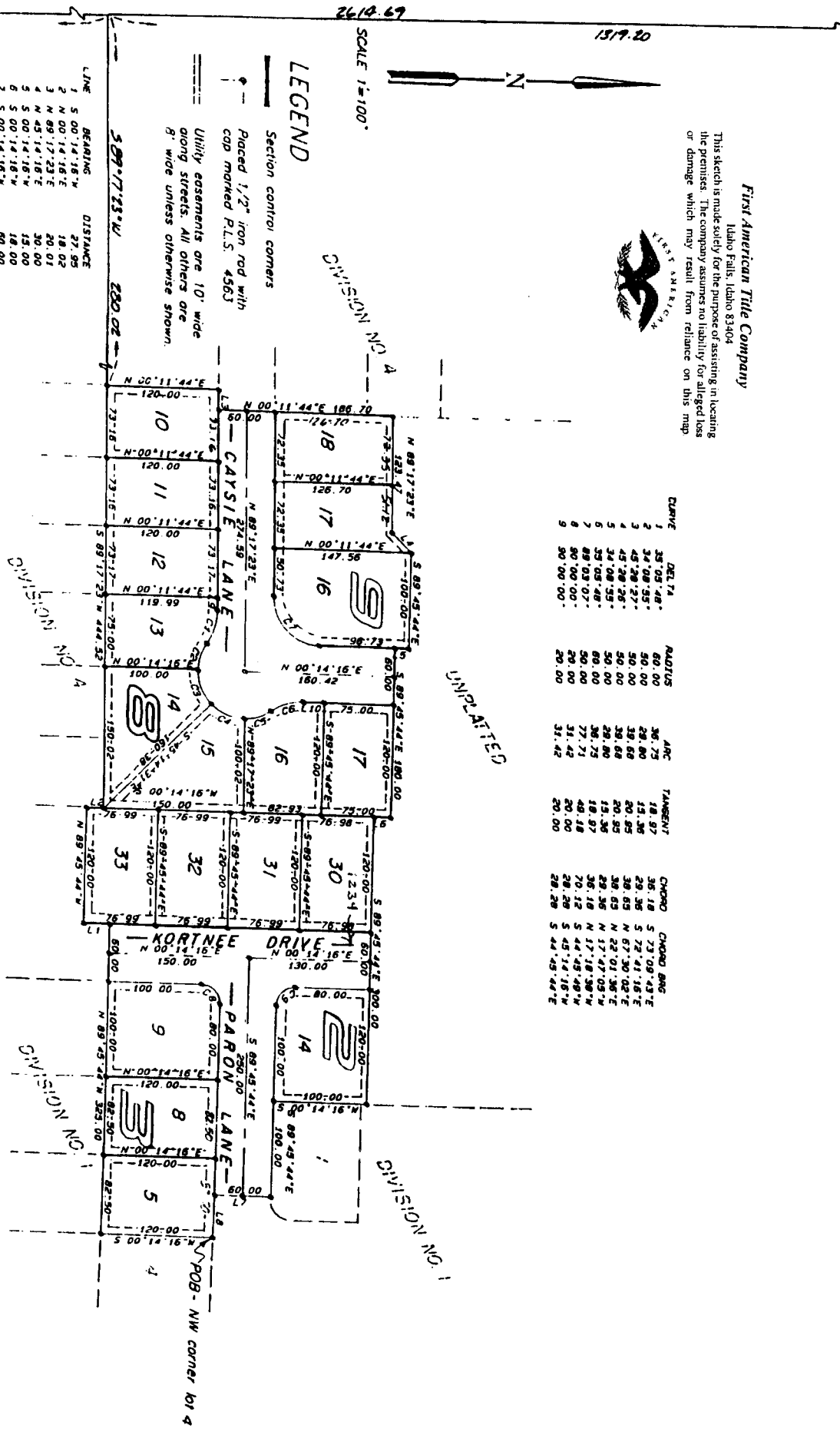
SCALE 1"=100'



LEGEND

- Section control corners
- Placed 1/2" iron rod with cap marked P.L.S. 4563
- Utility easements are 10' wide along streets. All others are 5' wide unless otherwise shown.

LINE	BEARING	DISTANCE
1	S 00° 14' 18" W	27.95
2	N 00° 14' 18" E	18.02
3	N 89° 17' 23" E	50.01
4	N 45° 14' 16" E	30.00
5	S 00° 14' 18" W	15.00
6	S 00° 14' 18" W	18.00
7	S 00° 14' 18" W	80.00
8	S 89° 45' 44" E	45.00
9	N 89° 17' 23" E	12.34
10	N 00° 14' 18" E	22.17



N 0° 11' 44" E
75.69

2619.69

1519.20