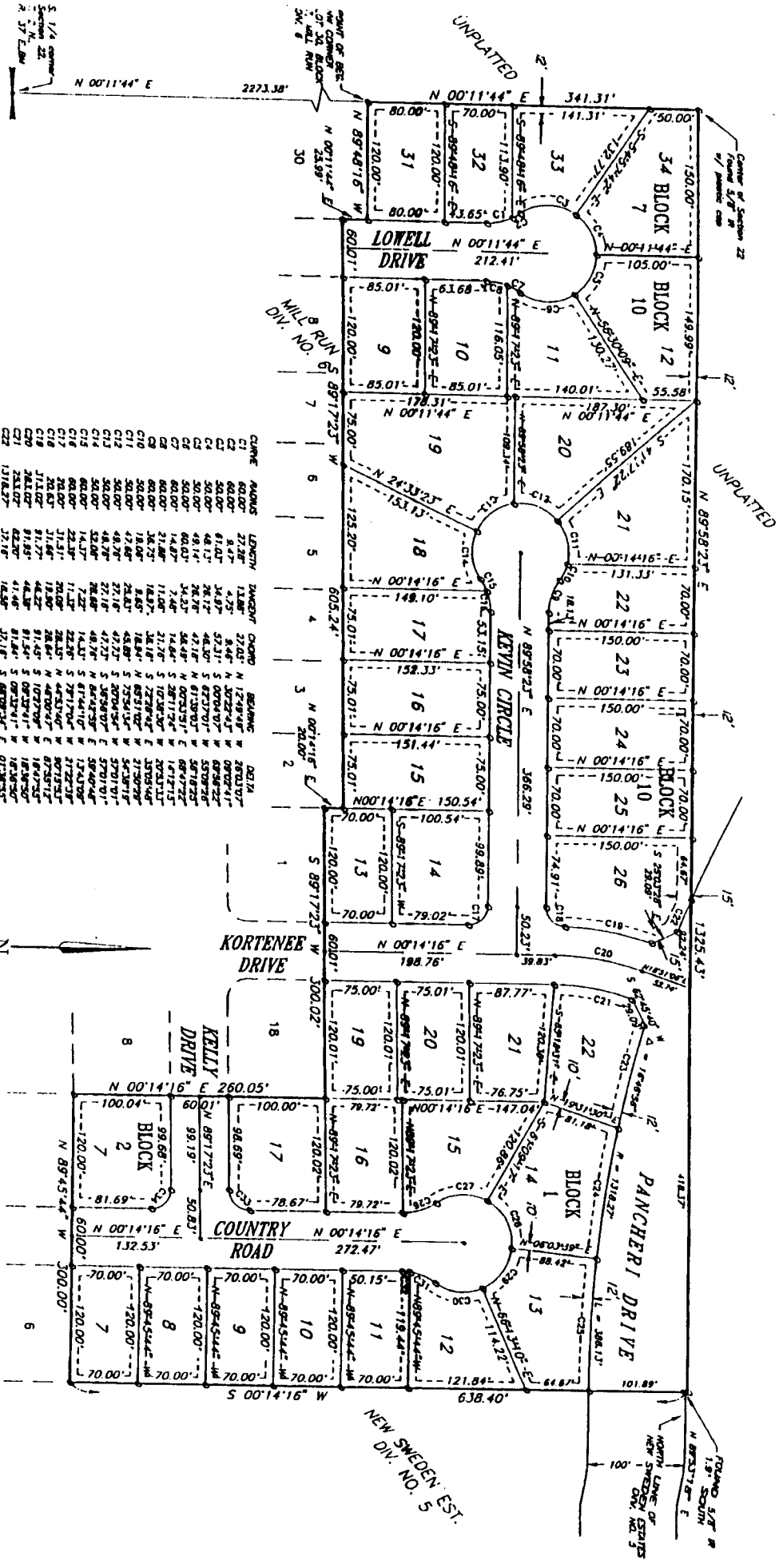


MILL RUN DIVISION NO. 7

AN ADDITION TO THE CITY OF IDAHO FALLS, BONNEVILLE COUNTY, IDAHO
A PORTION OF THE S.E. 1/4 OF SECTION 22, TOWNSHIP 2 NORTH, RANGE 37 EAST B.M.



CHAIN	LENGTH	THENCE	BEARING	CO. 1/2
C1	60.00	S 27.26°	N 12°14'16" E	2870.00
C2	60.00	S 4.47°	N 10°22'45" W	6872.41
C3	60.00	S 81.07°	N 00°04'07" W	6878.22
C4	60.00	S 48.13°	N 6°23'37" W	5378.25
C5	60.00	S 26.72°	N 8°12'30" W	5878.25
C6	60.00	S 48.14°	N 8°12'30" W	5878.25
C7	60.00	S 54.23°	N 00°23'21" E	6871.22
C8	60.00	S 17.48°	N 02°51'25" E	6871.22
C9	60.00	S 16.25°	N 10°28'20" E	10733.15
C10	60.00	S 18.00°	N 8°51'02" E	31703.89
C11	60.00	S 42.68°	N 7°25'41" E	5438.17
C12	60.00	S 48.78°	N 7°25'41" E	5701.01
C13	60.00	S 27.18°	N 8°45'29" E	5701.01
C14	60.00	S 48.78°	N 8°45'29" E	5840.44
C15	60.00	S 14.37°	N 7°25'41" E	17343.39
C16	60.00	S 11.22°	N 5°17'10" E	21723.39
C17	60.00	S 11.22°	N 5°17'10" E	8773.52
C18	60.00	S 18.00°	N 4°00'41" E	18471.52
C19	60.00	S 31.66°	N 4°00'41" E	18471.52
C20	60.00	S 44.82°	N 1°27'29" E	18471.52
C21	60.00	S 44.82°	N 1°27'29" E	18471.52
C22	60.00	S 23.07°	N 8°12'30" E	18471.52
C23	60.00	S 17.18°	N 5°07'03" E	07187.52
C24	60.00	S 17.18°	N 5°07'03" E	07187.52
C25	60.00	S 11.62°	N 1°10'25" E	08787.02
C26	60.00	S 11.62°	N 1°10'25" E	08787.02
C27	60.00	S 36.25°	N 8°12'30" E	03537.02
C28	60.00	S 36.25°	N 8°12'30" E	03537.02
C29	60.00	S 31.00°	N 5°17'10" E	6352.17
C30	60.00	S 31.00°	N 5°17'10" E	6352.17
C31	60.00	S 28.86°	N 6°23'37" E	6717.24
C32	60.00	S 28.86°	N 6°23'37" E	6717.24
C33	60.00	S 51.34°	N 0°54'47" E	6078.31
C34	60.00	S 51.34°	N 0°54'47" E	6078.31
C35	60.00	S 42.71°	N 2°14'09" W	07233.58
C36	60.00	S 42.71°	N 2°14'09" W	07233.58
C37	60.00	S 21.73°	N 4°45'56" E	8903.57
C38	60.00	S 21.73°	N 4°45'56" E	8903.57

LEGEND

- Section control corners
- Placed 1/2" iron rod with cap marked P.L.S. 4563
- Utility easements are 10' wide
- Streets are 40' wide unless otherwise shown.

This sketch is made solely for the purpose of assisting in locating the premises. The company assumes no liability for alleged loss or damage which may result from reliance on this map.



First American Title Company
Idaho Falls, Idaho 83404