

MILLBROOK OFFICE CENTER DIVISION NO. 1

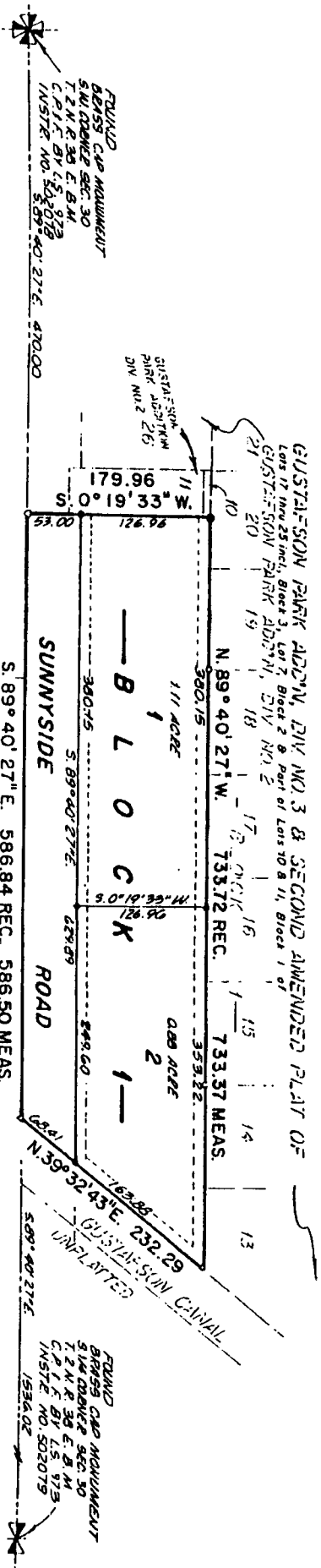
AN ADDITION TO THE CITY OF IDAHO FALLS,
BONNEVILLE COUNTY, IDAHO

PART OF THE S.W. 1/4 S.W. 1/4 SECTION 30, T.2N. R.38 E. B.M.

First American Title Company

Idaho Falls, Idaho 83404

This sketch is made solely for the purpose of assisting in locating the premises. The company assumes no liability for alleged loss or damage which may result from reliance on this map.



FIRST LUTHERAN
CHURCH ADDITION
DIV. NO. 1

UNPLATTED

GUSTAFSON CANNAL
UNPLATTED

LEGEND & NOTES

- 5/8" x 3/8" Steel Re-bar set with plastic cap stamped L.S. 827
- 1/2" x 24" Steel Re-bar set with plastic cap stamped L.S. 827
- ▽ MASCOTEC MARK SET BY A.9.94/6.17.2000/11/1
- Steel Re-bar found with stamped NO. 2425

A. Ten feet wide Utility Easement is hereby granted along all road frontages within each lot.
All other easements are 12' feet wide unless otherwise noted.