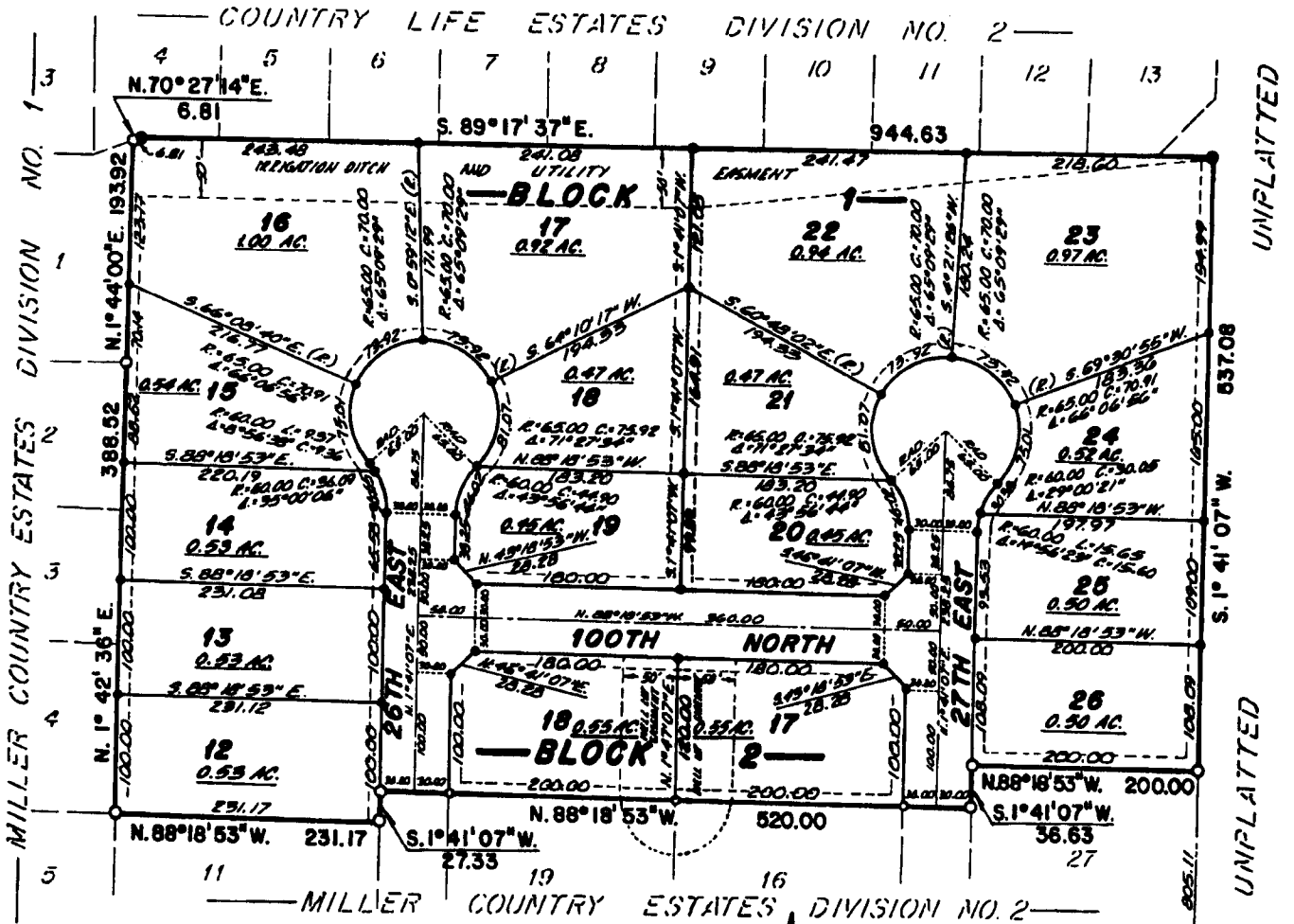


MILLER COUNTRY ESTATES DIVISION NO. 3 BONNEVILLE COUNTY, IDAHO

PART OF THE W. 1/2 S.W. 1/4 SECTION 15, T. 3 N. R. 38 E., B.M.

First American Title Company
Idaho Falls, Idaho 83404

This sketch is made solely for the purpose of assisting in locating the premises. The company assumes no liability for alleged loss or damage which may result from reliance on this map.



LEGEND & NOTES

- 5/8" x 30" Steel Re-bar not with plastic cap stamped L.S. 827
- 1/2" x 24" Steel Re-bar not with plastic cap stamped L.S. 827
- 5/8" Steel Re-bar found with caps stamped
- 1/2" Steel Re-bar found with caps stamped

--- Utility easements are ten feet wide unless otherwise noted.

The County will not maintain roads until constructed to County Standards and officially accepted.

Private driveway approaches will be constructed as shown on the approved improvement drawings on file in the office of the County Engineer and drainage swales shall be maintained by the lot owners.

Lots shown on this plat are included in a lighting district and will be assessed for the operation and maintenance.



FOUND RAILROAD SPIKE
S.W. CORNER SEC. 15
T. 3 N. R. 38 E. B.M.
C.P.C. BY L.S. 760
INSTR. NO. 637853

192795 192796
S. 1° 41' 07" W. 109.09
S. 1° 41' 07" W. 109.09
SEC. LINE - BASIS OF BEARING
AS PER COUNTRY LIFE ESTATES

UNPLATTED

UNPLATTED