

1020 Lincoln Road
 Idaho Falls, Idaho 83401 (209) 524-6175

1207TH NORTH

MIL O CEMETERY

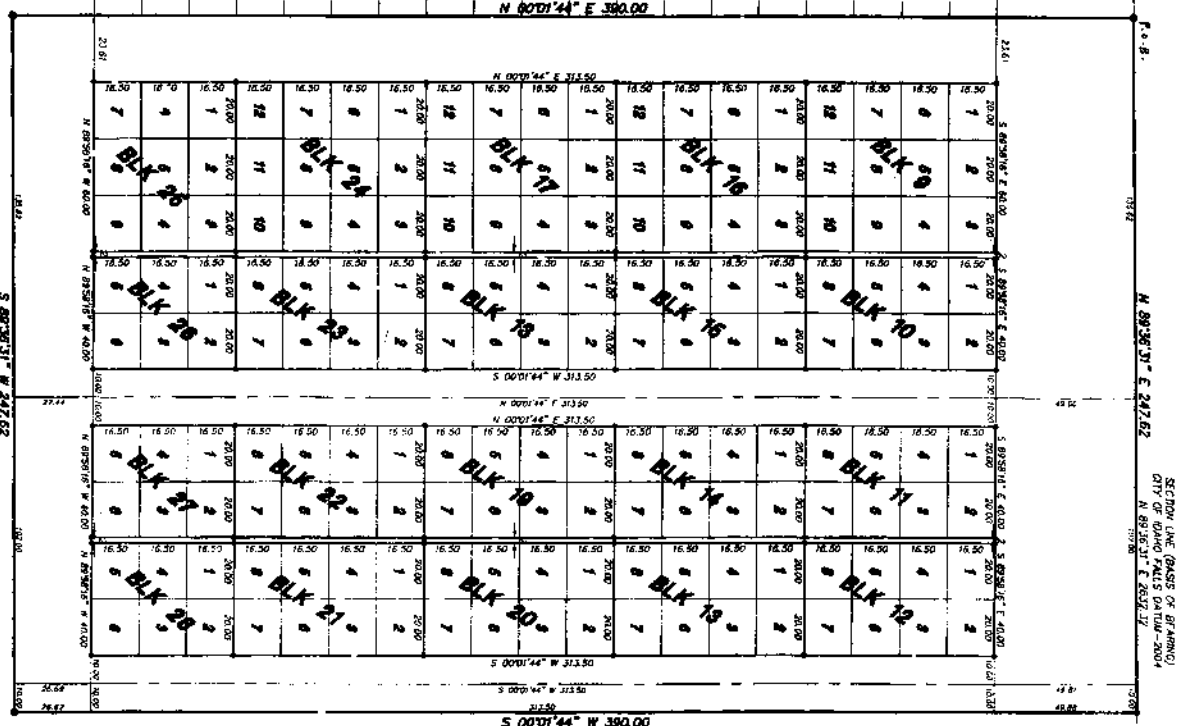
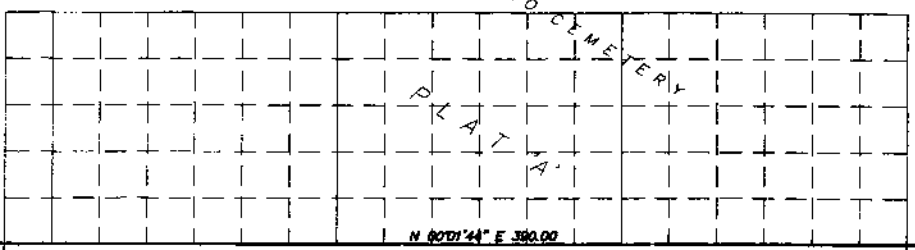
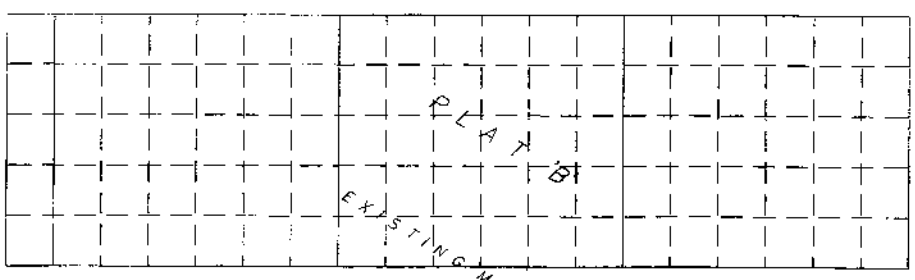
DIVISION NO. 2

BONNEVILLE COUNTY, IDAHO

BEING A PART OF THE NE 1/4 OF SECTION 9, T5N R39E S4M

Instrument # 1346143
 Idaho Falls, Bonneville County
 Recorded on: 11/11/11
 Book: 111, Page: 1
 Surveyor: M. J. ...
 Ronald Lindsey, County Recorder
 Idaho Falls, Idaho

Found along road
 1/4 COR SECTION 9
 T5N R39E S4M
 1/4 COR SECTION 9
 T5N R39E S4M
 INSTR. NO. 1346143



SECTION LINE (BASED ON BURNING)
 CITY OF IDAHO FALLS DATUM - 2004
 N 89°30'31" E 247.62
 N 89°30'31" E 247.62

RONALD LINDSEY, C.A.P.
 COUNTY RECORDER
 135 N. R. 39E S. 4M
 CORNER OF U.S. 822
 IDAHO FALLS, IDAHO 83401
 INSTR. NO. 026000



4.125	N 00°01'44" E 16.50	4.125
PLOT 7		PLOT 8
PLOT 9		PLOT 3
PLOT 2		PLOT 4
PLOT 8		PLOT 1

TYPICAL BURIAL PLOT NUMBERING FOR LOTS
 TYPICAL PLOT AREA IS 41.25 SF.

LEGEND & NOTES

- 50' x 70' Standard Burial Plot (Typical) - \$1795
- 50' x 70' Standard Burial Plot (Special) - \$1895
- 10' Standard Burial Plot (Special) - \$172

RECORDER'S CERTIFICATE

I hereby certify that the above is a true and correct copy of the original record as shown to me by the surveyor, and that the same has been recorded in the office of the County Recorder, Bonneville County, Idaho, on this 11th day of November, 2011.
 M-112
 Ronald Lindsey, County Recorder

SURVEYOR'S CERTIFICATE

I, the undersigned, being a duly licensed and sworn Surveyor, and being duly qualified in the State of Idaho, do hereby certify that the above is a true and correct copy of the original record as shown to me by the surveyor, and that the same has been recorded in the office of the County Recorder, Bonneville County, Idaho, on this 11th day of November, 2011.
 STATE OF IDAHO
 CERTIFICATE NO. 0115



