

MISKIN ADDITION

TO
THE VILLAGE OF UCON, IDAHO
Part of
NE 1/4 of Sec. 15, T.3 N., R.38 E.B.M.

First American Title Company

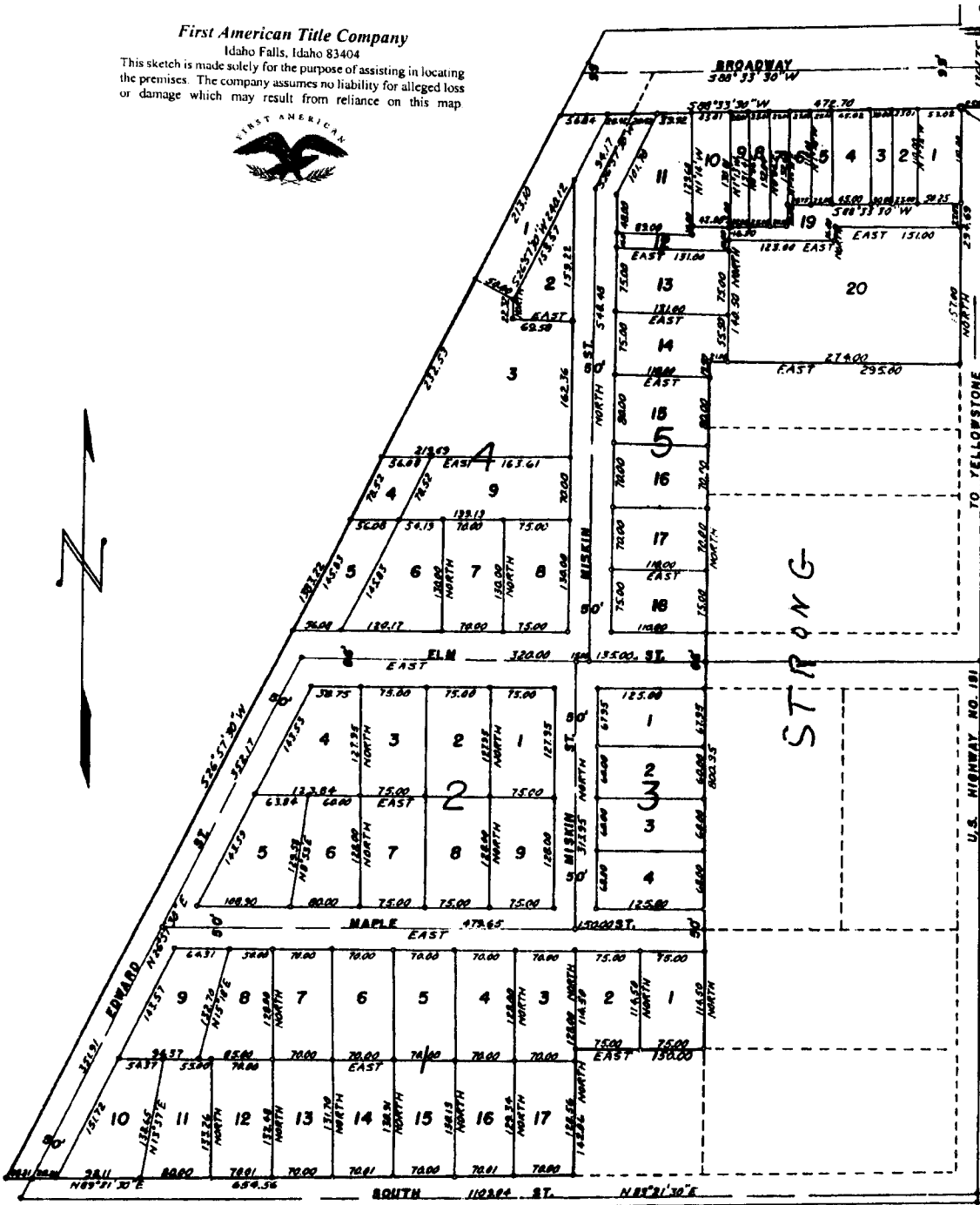
Idaho Falls, Idaho 83404

This sketch is made solely for the purpose of assisting in locating the premises. The company assumes no liability for alleged loss or damage which may result from reliance on this map



NE CORNER
NE 1/4, SECTION 18
T.3 N., R.38 E.B.M.

2" Iron Pipe (Point
of Beginning)



U.S. HIGHWAY NO. 101

TO YELLOWSTONE

BROADWAY
S 89° 53' 30" W

ELM EAST 320.00

MAPLE EAST 479.65

NORTH 112.84 ST. N 89° 21' 30" E

STRONG