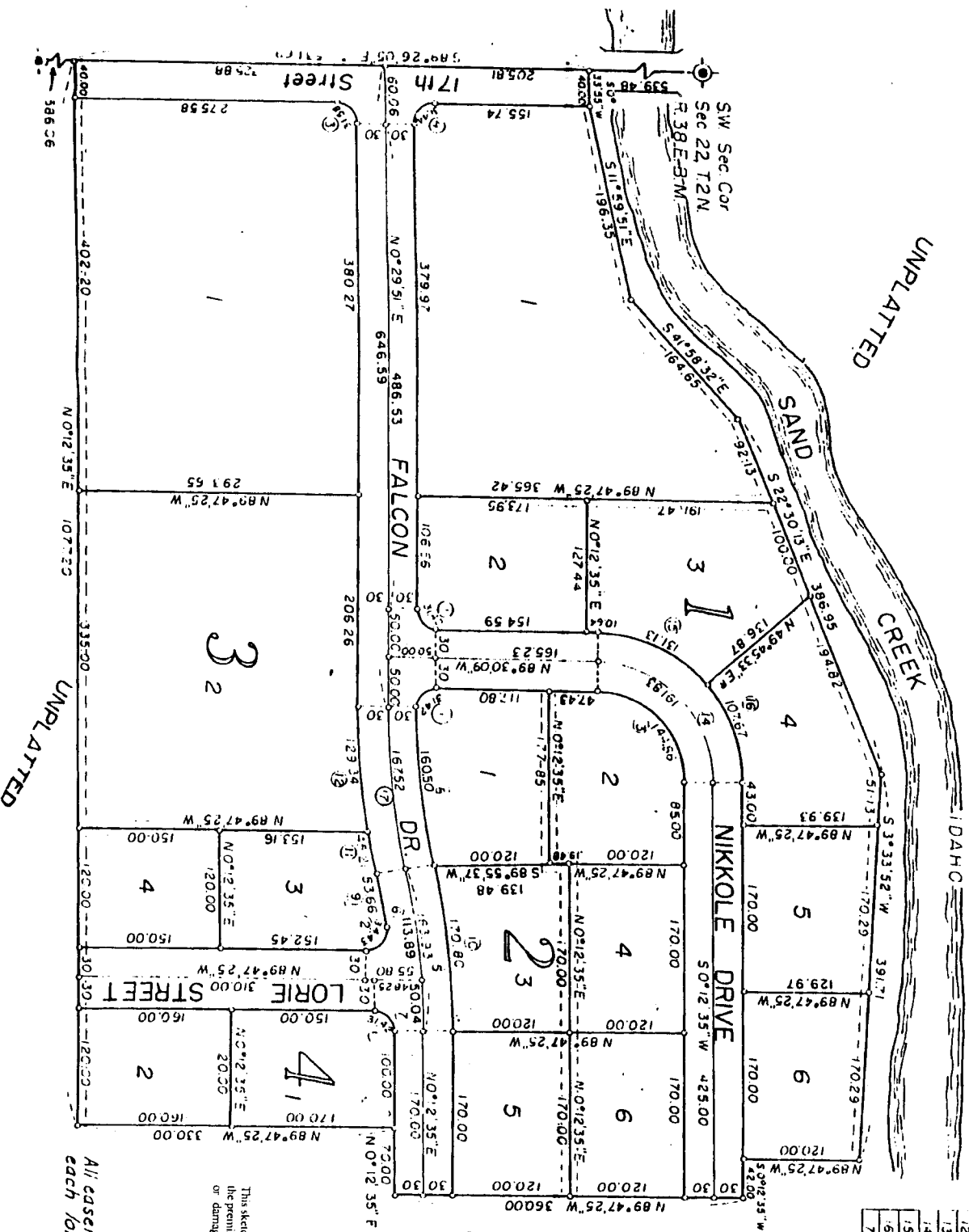


# MONTY HOWELL ADDITION

TO THE CITY OF AMMON  
BONNEVILLE COUNTY, IDAHO  
PART OF THE SW 1/4 OF SEC 22 T 2 N, R 38 E 3 W



2	198°38'25"	26.00	34.43	23.27	30.33
3	89°55'56"	20.12	31.58	20.02	28.44
4	90°34'04"	20.00	31.44	20.02	28.30
5	130°28'	71.65	163.93	82.33	163.57
5	9°07'05"	71.65	143.89	57.07	113.77
7	4°02'51"	71.65	50.04	25.03	50.03
9	13°24'44"	68.56	60.50	80.62	160.13
9	4°29'03"	68.55	53.66	26.84	53.65
10	137°07'5"	74.55	170.80	85.78	170.43
11	3°22'56"	74.55	15.21	22.61	45.20
12	5°56'18"	74.55	29.34	64.33	29.17
13	89°42'44"	92.51	144.86	92.05	130.51
14	89°42'44"	122.51	51.83	21.90	72.83
15	49°15'42"	52.51	131.33	69.93	27.13
6	4°22'22"	52.51	127.67	55.19	65.45
7	1°24'44"	71.65	57.52	84.15	167.14

All easements are 8 ft wide through each lot unless otherwise noted.



**First American Title Company**  
Idaho Falls, Idaho 83404  
This sketch is made solely for the purpose of assisting in locating the premises. The company assumes no liability for alleged loss or damage which may result from reliance on this map.