

CURVE TABLE

NAME	DELTA	ARC	RADIUS	CHORD	CHORD BEARING	CHORD DISTANCE
C1	40°22'00"	42.49	60.00	50.00	N89°57'01"W	8.47
C2	81°44'00"	84.98	60.00	50.00	S00°00'00"W	16.94
C3	81°44'00"	84.98	60.00	50.00	S00°00'00"W	16.94
C4	40°22'00"	42.49	60.00	50.00	N89°57'01"W	8.47
C5	40°22'00"	42.49	60.00	50.00	N89°57'01"W	8.47
C6	81°44'00"	84.98	60.00	50.00	S00°00'00"W	16.94
C7	81°44'00"	84.98	60.00	50.00	S00°00'00"W	16.94
C8	40°22'00"	42.49	60.00	50.00	N89°57'01"W	8.47
C9	40°22'00"	42.49	60.00	50.00	N89°57'01"W	8.47
C10	81°44'00"	84.98	60.00	50.00	S00°00'00"W	16.94
C11	81°44'00"	84.98	60.00	50.00	S00°00'00"W	16.94
C12	40°22'00"	42.49	60.00	50.00	N89°57'01"W	8.47
C13	40°22'00"	42.49	60.00	50.00	N89°57'01"W	8.47
C14	81°44'00"	84.98	60.00	50.00	S00°00'00"W	16.94
C15	81°44'00"	84.98	60.00	50.00	S00°00'00"W	16.94
C16	40°22'00"	42.49	60.00	50.00	N89°57'01"W	8.47
C17	40°22'00"	42.49	60.00	50.00	N89°57'01"W	8.47
C18	81°44'00"	84.98	60.00	50.00	S00°00'00"W	16.94
C19	81°44'00"	84.98	60.00	50.00	S00°00'00"W	16.94
C20	40°22'00"	42.49	60.00	50.00	N89°57'01"W	8.47
C21	40°22'00"	42.49	60.00	50.00	N89°57'01"W	8.47
C22	81°44'00"	84.98	60.00	50.00	S00°00'00"W	16.94
C23	81°44'00"	84.98	60.00	50.00	S00°00'00"W	16.94
C24	40°22'00"	42.49	60.00	50.00	N89°57'01"W	8.47
C25	40°22'00"	42.49	60.00	50.00	N89°57'01"W	8.47
C26	81°44'00"	84.98	60.00	50.00	S00°00'00"W	16.94
C27	81°44'00"	84.98	60.00	50.00	S00°00'00"W	16.94
C28	40°22'00"	42.49	60.00	50.00	N89°57'01"W	8.47
C29	40°22'00"	42.49	60.00	50.00	N89°57'01"W	8.47
C30	81°44'00"	84.98	60.00	50.00	S00°00'00"W	16.94
C31	81°44'00"	84.98	60.00	50.00	S00°00'00"W	16.94
C32	40°22'00"	42.49	60.00	50.00	N89°57'01"W	8.47
C33	40°22'00"	42.49	60.00	50.00	N89°57'01"W	8.47
C34	81°44'00"	84.98	60.00	50.00	S00°00'00"W	16.94
C35	81°44'00"	84.98	60.00	50.00	S00°00'00"W	16.94
C36	40°22'00"	42.49	60.00	50.00	N89°57'01"W	8.47
C37	40°22'00"	42.49	60.00	50.00	N89°57'01"W	8.47
C38	81°44'00"	84.98	60.00	50.00	S00°00'00"W	16.94
C39	81°44'00"	84.98	60.00	50.00	S00°00'00"W	16.94
C40	40°22'00"	42.49	60.00	50.00	N89°57'01"W	8.47
C41	40°22'00"	42.49	60.00	50.00	N89°57'01"W	8.47
C42	81°44'00"	84.98	60.00	50.00	S00°00'00"W	16.94
C43	81°44'00"	84.98	60.00	50.00	S00°00'00"W	16.94
C44	40°22'00"	42.49	60.00	50.00	N89°57'01"W	8.47
C45	40°22'00"	42.49	60.00	50.00	N89°57'01"W	8.47
C46	81°44'00"	84.98	60.00	50.00	S00°00'00"W	16.94
C47	81°44'00"	84.98	60.00	50.00	S00°00'00"W	16.94
C48	40°22'00"	42.49	60.00	50.00	N89°57'01"W	8.47
C49	40°22'00"	42.49	60.00	50.00	N89°57'01"W	8.47
C50	81°44'00"	84.98	60.00	50.00	S00°00'00"W	16.94
C51	81°44'00"	84.98	60.00	50.00	S00°00'00"W	16.94
C52	40°22'00"	42.49	60.00	50.00	N89°57'01"W	8.47
C53	40°22'00"	42.49	60.00	50.00	N89°57'01"W	8.47
C54	81°44'00"	84.98	60.00	50.00	S00°00'00"W	16.94
C55	81°44'00"	84.98	60.00	50.00	S00°00'00"W	16.94
C56	40°22'00"	42.49	60.00	50.00	N89°57'01"W	8.47
C57	40°22'00"	42.49	60.00	50.00	N89°57'01"W	8.47
C58	81°44'00"	84.98	60.00	50.00	S00°00'00"W	16.94
C59	81°44'00"	84.98	60.00	50.00	S00°00'00"W	16.94
C60	40°22'00"	42.49	60.00	50.00	N89°57'01"W	8.47
C61	40°22'00"	42.49	60.00	50.00	N89°57'01"W	8.47
C62	81°44'00"	84.98	60.00	50.00	S00°00'00"W	16.94
C63	81°44'00"	84.98	60.00	50.00	S00°00'00"W	16.94
C64	40°22'00"	42.49	60.00	50.00	N89°57'01"W	8.47
C65	40°22'00"	42.49	60.00	50.00	N89°57'01"W	8.47
C66	81°44'00"	84.98	60.00	50.00	S00°00'00"W	16.94
C67	81°44'00"	84.98	60.00	50.00	S00°00'00"W	16.94
C68	40°22'00"	42.49	60.00	50.00	N89°57'01"W	8.47
C69	40°22'00"	42.49	60.00	50.00	N89°57'01"W	8.47
C70	81°44'00"	84.98	60.00	50.00	S00°00'00"W	16.94
C71	81°44'00"	84.98	60.00	50.00	S00°00'00"W	16.94
C72	40°22'00"	42.49	60.00	50.00	N89°57'01"W	8.47
C73	40°22'00"	42.49	60.00	50.00	N89°57'01"W	8.47
C74	81°44'00"	84.98	60.00	50.00	S00°00'00"W	16.94
C75	81°44'00"	84.98	60.00	50.00	S00°00'00"W	16.94
C76	40°22'00"	42.49	60.00	50.00	N89°57'01"W	8.47
C77	40°22'00"	42.49	60.00	50.00	N89°57'01"W	8.47
C78	81°44'00"	84.98	60.00	50.00	S00°00'00"W	16.94
C79	81°44'00"	84.98	60.00	50.00	S00°00'00"W	16.94
C80	40°22'00"	42.49	60.00	50.00	N89°57'01"W	8.47
C81	40°22'00"	42.49	60.00	50.00	N89°57'01"W	8.47
C82	81°44'00"	84.98	60.00	50.00	S00°00'00"W	16.94
C83	81°44'00"	84.98	60.00	50.00	S00°00'00"W	16.94
C84	40°22'00"	42.49	60.00	50.00	N89°57'01"W	8.47
C85	40°22'00"	42.49	60.00	50.00	N89°57'01"W	8.47
C86	81°44'00"	84.98	60.00	50.00	S00°00'00"W	16.94
C87	81°44'00"	84.98	60.00	50.00	S00°00'00"W	16.94
C88	40°22'00"	42.49	60.00	50.00	N89°57'01"W	8.47
C89	40°22'00"	42.49	60.00	50.00	N89°57'01"W	8.47
C90	81°44'00"	84.98	60.00	50.00	S00°00'00"W	16.94
C91	81°44'00"	84.98	60.00	50.00	S00°00'00"W	16.94
C92	40°22'00"	42.49	60.00	50.00	N89°57'01"W	8.47
C93	40°22'00"	42.49	60.00	50.00	N89°57'01"W	8.47
C94	81°44'00"	84.98	60.00	50.00	S00°00'00"W	16.94
C95	81°44'00"	84.98	60.00	50.00	S00°00'00"W	16.94
C96	40°22'00"	42.49	60.00	50.00	N89°57'01"W	8.47
C97	40°22'00"	42.49	60.00	50.00	N89°57'01"W	8.47
C98	81°44'00"	84.98	60.00	50.00	S00°00'00"W	16.94
C99	81°44'00"	84.98	60.00	50.00	S00°00'00"W	16.94
C100	40°22'00"	42.49	60.00	50.00	N89°57'01"W	8.47

CURVE TABLE

MOUNTAIN RIDGE ESTATES

DIVISION NO. 4

CITY OF IONA, BONNEVILLE COUNTY, IDAHO
PART OF THE NORTHWEST 1/4 OF SEC. 12, T.2N. R.36 E.B.M.

LINE TABLE

LINE	BEARING	DISTANCE
L1	N89°57'01"W	28.70
L2	N89°57'01"W	28.70
L3	N89°57'01"W	28.70
L4	N89°57'01"W	28.70
L5	N89°57'01"W	28.70
L6	N89°57'01"W	28.70
L7	N89°57'01"W	28.70
L8	N89°57'01"W	28.70
L9	N89°57'01"W	28.70
L10	N89°57'01"W	28.70
L11	N89°57'01"W	28.70
L12	N89°57'01"W	28.70
L13	N89°57'01"W	28.70
L14	N89°57'01"W	28.70
L15	N89°57'01"W	28.70
L16	N89°57'01"W	28.70
L17	N89°57'01"W	28.70
L18	N89°57'01"W	28.70
L19	N89°57'01"W	28.70
L20	N89°57'01"W	28.70
L21	N89°57'01"W	28.70

First American Title Company
Idaho Falls, ID 83404
While this is a photographic reproduction of the recorded plat, the company assumes no liability for variations, if any, with a re-survey.

NOTES

1. The City of Iona will not maintain roads and contribute to county assistance and maintenance of roads and streets. The City of Iona will not maintain roads and contribute to county assistance and maintenance of roads and streets. The City of Iona will not maintain roads and contribute to county assistance and maintenance of roads and streets.

The City of Iona will not maintain roads and contribute to county assistance and maintenance of roads and streets. The City of Iona will not maintain roads and contribute to county assistance and maintenance of roads and streets. The City of Iona will not maintain roads and contribute to county assistance and maintenance of roads and streets.

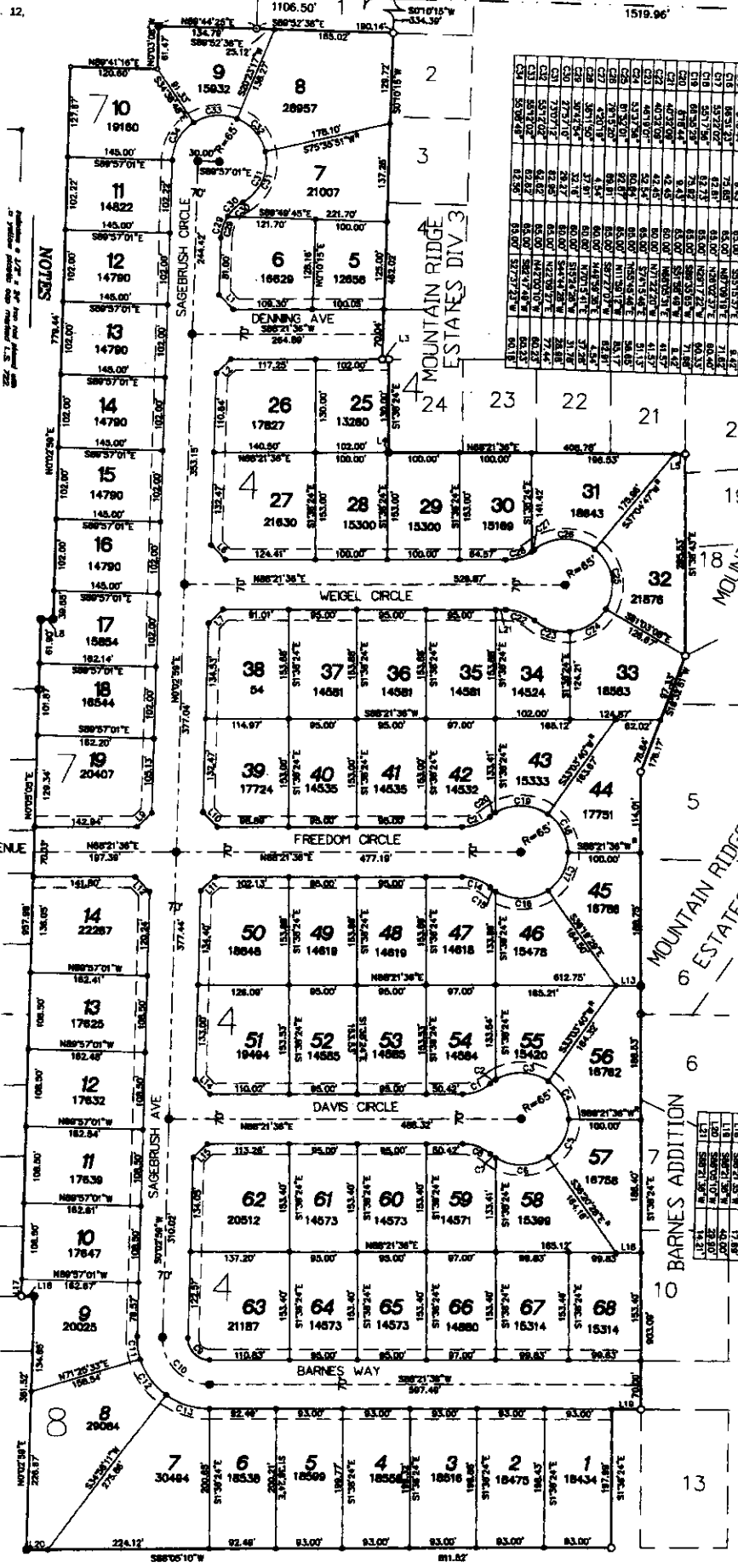
1
2
3
4
5
6

1
2
3
4
5
6

1
2
3
4
5
6

1
2
3
4
5
6

1
2
3
4
5
6



CROWLEY ROAD (4500 EAST)

SHEET 1 OF 2

1:50,000

N 1/4 COR. SEC. 12,
T.2N, R.36E.B.M.
C&P INST. #501993