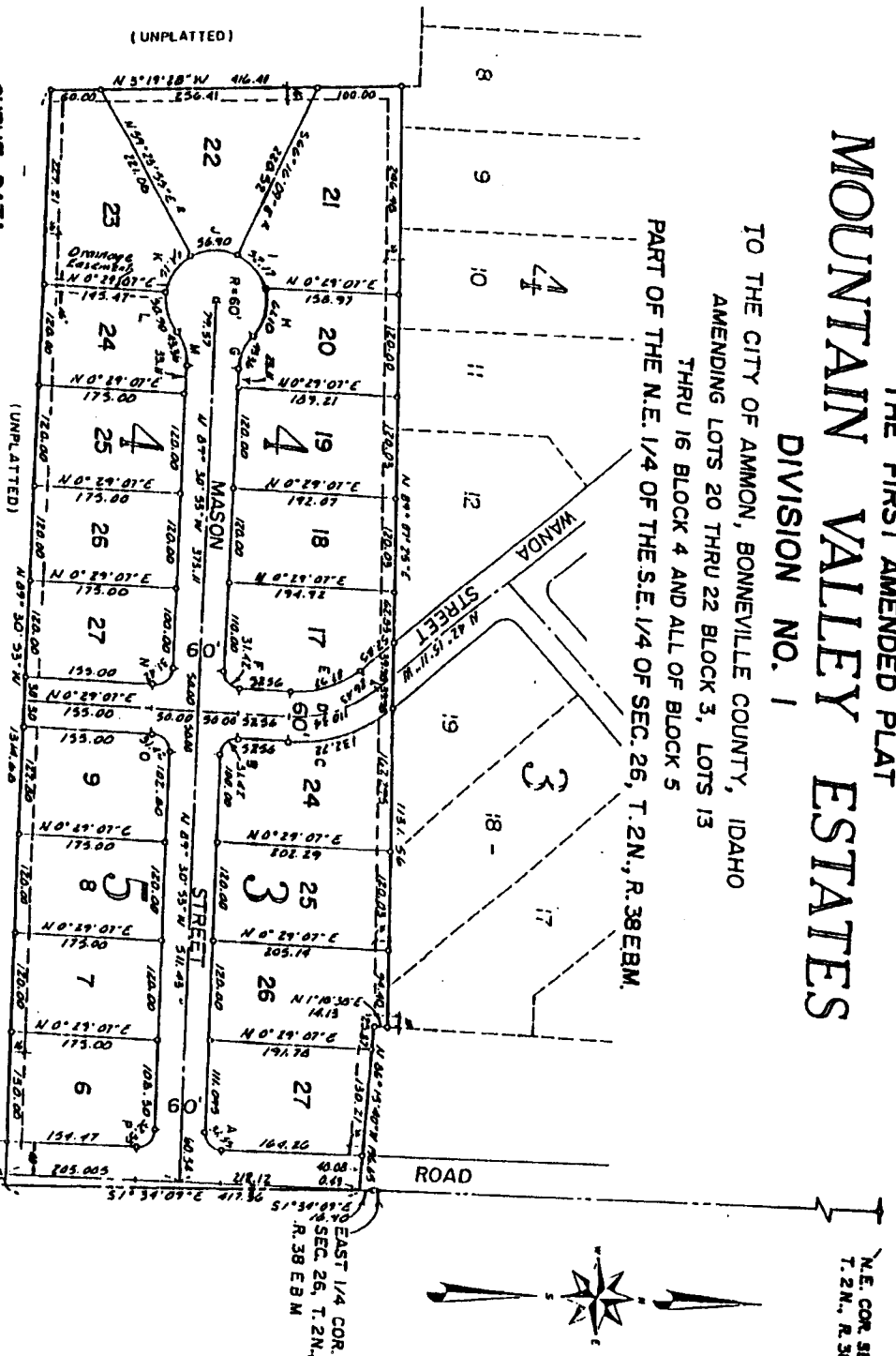


THE FIRST AMENDED PLAT MOUNTAIN VALLEY ESTATES DIVISION NO. 1

TO THE CITY OF AMMON, BONNEVILLE COUNTY, IDAHO
AMENDING LOTS 20 THRU 22 BLOCK 3, LOTS 13
THRU 16 BLOCK 4 AND ALL OF BLOCK 5
PART OF THE N.E. 1/4 OF THE S.E. 1/4 OF SEC. 26, T. 2N., R. 38E8M.



CURVE DATA

NO.	A	R	L	C	T
1	90° 22' 58"	70.00	31.45	28.36	78.13
2	90° 00' 00"	70.00	31.42	28.28	78.02
3	42° 45' 18"	177.83	132.72	129.87	88.82
4	117° 53'	110.38	107.80	87.30	87.30
5	90° 00' 00"	70.00	31.42	28.28	78.02
6	42° 45' 18"	177.83	132.72	129.87	88.82
7	117° 53'	110.38	107.80	87.30	87.30
8	90° 00' 00"	70.00	31.42	28.28	78.02
9	42° 45' 18"	177.83	132.72	129.87	88.82
10	117° 53'	110.38	107.80	87.30	87.30
11	90° 00' 00"	70.00	31.42	28.28	78.02
12	42° 45' 18"	177.83	132.72	129.87	88.82
13	117° 53'	110.38	107.80	87.30	87.30
14	90° 00' 00"	70.00	31.42	28.28	78.02
15	42° 45' 18"	177.83	132.72	129.87	88.82
16	117° 53'	110.38	107.80	87.30	87.30
17	90° 00' 00"	70.00	31.42	28.28	78.02
18	42° 45' 18"	177.83	132.72	129.87	88.82
19	117° 53'	110.38	107.80	87.30	87.30
20	90° 00' 00"	70.00	31.42	28.28	78.02
21	42° 45' 18"	177.83	132.72	129.87	88.82
22	117° 53'	110.38	107.80	87.30	87.30
23	90° 00' 00"	70.00	31.42	28.28	78.02
24	42° 45' 18"	177.83	132.72	129.87	88.82
25	117° 53'	110.38	107.80	87.30	87.30
26	90° 00' 00"	70.00	31.42	28.28	78.02
27	42° 45' 18"	177.83	132.72	129.87	88.82
28	117° 53'	110.38	107.80	87.30	87.30
29	90° 00' 00"	70.00	31.42	28.28	78.02
30	42° 45' 18"	177.83	132.72	129.87	88.82
31	117° 53'	110.38	107.80	87.30	87.30
32	90° 00' 00"	70.00	31.42	28.28	78.02
33	42° 45' 18"	177.83	132.72	129.87	88.82
34	117° 53'	110.38	107.80	87.30	87.30
35	90° 00' 00"	70.00	31.42	28.28	78.02
36	42° 45' 18"	177.83	132.72	129.87	88.82
37	117° 53'	110.38	107.80	87.30	87.30
38	90° 00' 00"	70.00	31.42	28.28	78.02
39	42° 45' 18"	177.83	132.72	129.87	88.82
40	117° 53'	110.38	107.80	87.30	87.30
41	90° 00' 00"	70.00	31.42	28.28	78.02
42	42° 45' 18"	177.83	132.72	129.87	88.82
43	117° 53'	110.38	107.80	87.30	87.30
44	90° 00' 00"	70.00	31.42	28.28	78.02
45	42° 45' 18"	177.83	132.72	129.87	88.82
46	117° 53'	110.38	107.80	87.30	87.30
47	90° 00' 00"	70.00	31.42	28.28	78.02
48	42° 45' 18"	177.83	132.72	129.87	88.82
49	117° 53'	110.38	107.80	87.30	87.30
50	90° 00' 00"	70.00	31.42	28.28	78.02
51	42° 45' 18"	177.83	132.72	129.87	88.82
52	117° 53'	110.38	107.80	87.30	87.30
53	90° 00' 00"	70.00	31.42	28.28	78.02
54	42° 45' 18"	177.83	132.72	129.87	88.82
55	117° 53'	110.38	107.80	87.30	87.30
56	90° 00' 00"	70.00	31.42	28.28	78.02
57	42° 45' 18"	177.83	132.72	129.87	88.82
58	117° 53'	110.38	107.80	87.30	87.30
59	90° 00' 00"	70.00	31.42	28.28	78.02
60	42° 45' 18"	177.83	132.72	129.87	88.82
61	117° 53'	110.38	107.80	87.30	87.30
62	90° 00' 00"	70.00	31.42	28.28	78.02
63	42° 45' 18"	177.83	132.72	129.87	88.82
64	117° 53'	110.38	107.80	87.30	87.30
65	90° 00' 00"	70.00	31.42	28.28	78.02
66	42° 45' 18"	177.83	132.72	129.87	88.82
67	117° 53'	110.38	107.80	87.30	87.30
68	90° 00' 00"	70.00	31.42	28.28	78.02
69	42° 45' 18"	177.83	132.72	129.87	88.82
70	117° 53'	110.38	107.80	87.30	87.30

First American Title Company
 Idaho Falls, Idaho 83404
 This sketch is made solely for the purpose of assisting in locating
 the premises. The company assumes no liability for alleged loss
 or damage which may result from reliance on this map.



NOTES

- 1. Indicate a 1/2" x 38" iron rod with a yellow plastic cap marked L.S. 788.
- 2. Utility comments are 6" bare lead for unless otherwise shown.
- 3. 1/4" wide utility easement is reserved along the street side of all lots.

CROWLEY ROAD N 0° 06' 09" E
 SECTION 26
 S.E. COR SE
 T. 2N., R. 38E

N.E. COR. SEC. 26
 T. 2N., R. 38E8M

