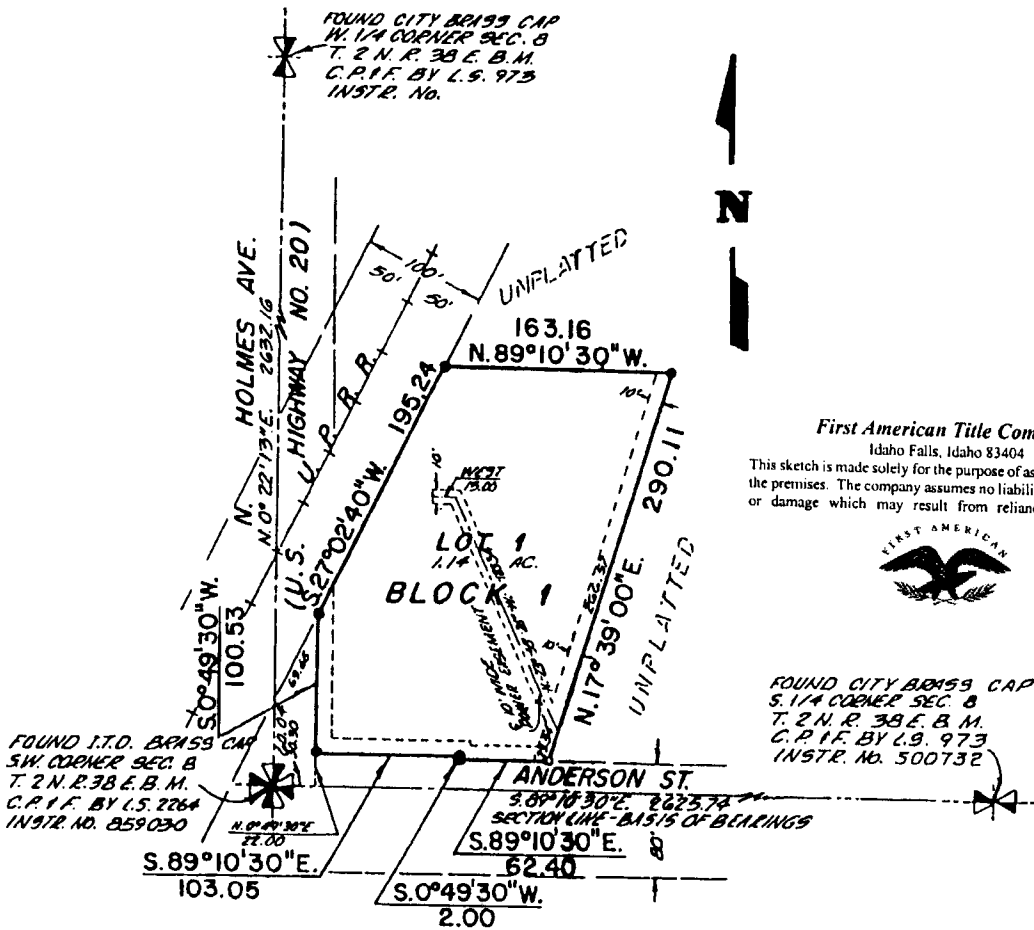


N.B.N. CAR CORNER DIVISION NO. 1

AN ADDITION TO THE CITY OF IDAHO FALLS
BONNEVILLE COUNTY, IDAHO

PART OF THE S.W. 1/4 S.W. 1/4 SECTION 8, T. 2 N., R. 38 E., B.M.



First American Title Company

Idaho Falls, Idaho 83404

This sketch is made solely for the purpose of assisting in locating the premises. The company assumes no liability for alleged loss or damage which may result from reliance on this map.



FOUND CITY BRASS CAP
S. 1/4 CORNER SEC. 8
T. 2 N. R. 38 E. B.M.
C.P.I.F. BY L.S. 973
INSTR. NO. 500732

LEGEND & NOTES

- 5/8" x 30" Steel Re-bar set with plastic cap stamped L.S. 827
 - 1/2" Steel Re-bar found with cap stamped L.S. 760
- A Ten foot wide Utility Easement is hereby granted along all street frontages. Other easements are as shown.