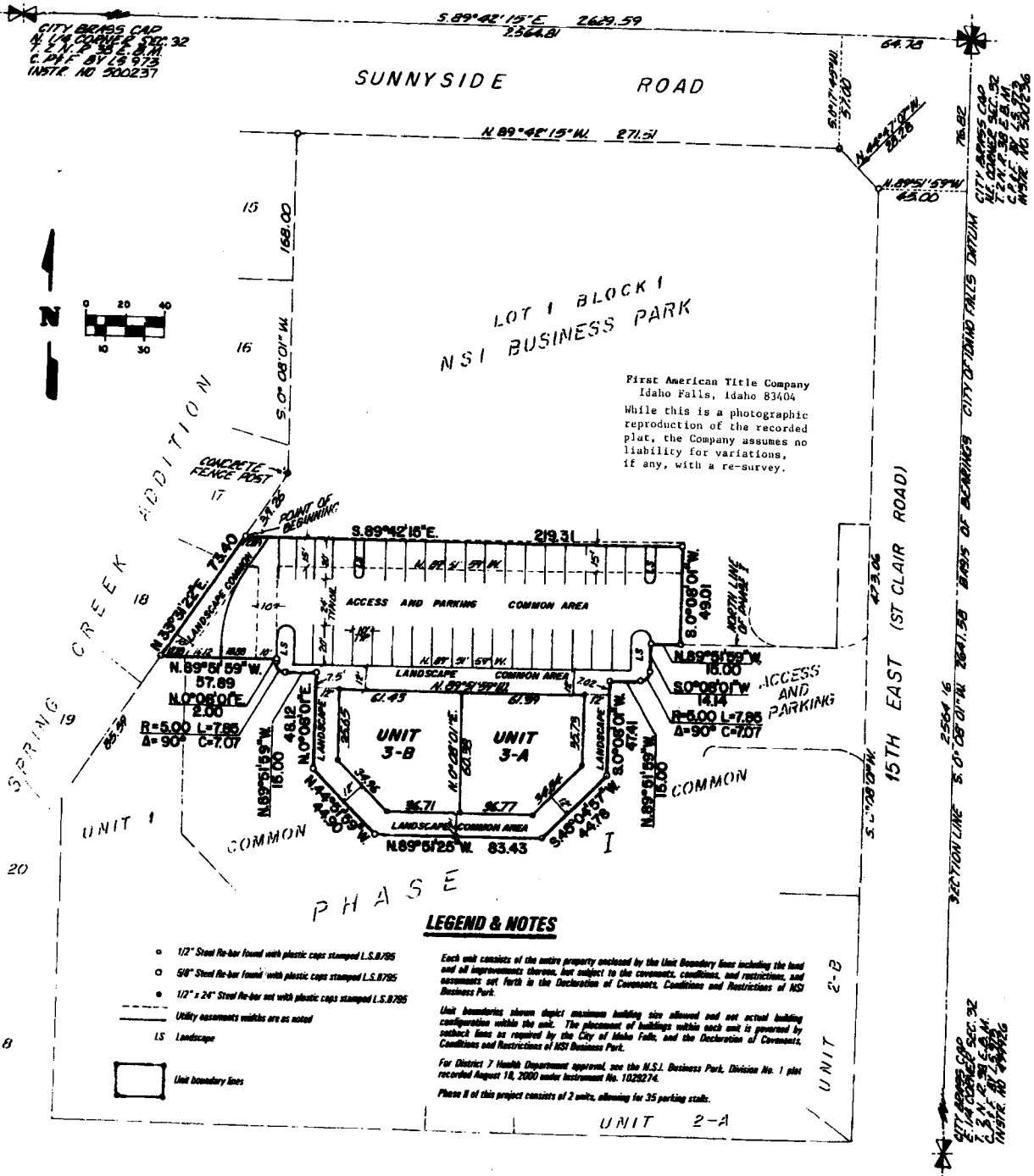


NSI BUSINESS PARK PHASE II

PURSUANT TO IDAHO CODE, TITLE 55, CHAPTER 15
CITY OF IDAHO FALLS, BONNEVILLE COUNTY, IDAHO



First American Title Company
Idaho Falls, Idaho 83404
While this is a photographic reproduction of the recorded plat, the Company assumes no liability for variations, if any, with a re-survey.

CITY BRASS CAP
N. 1/4 CORNER SEC. 32
T. 2 N. R. 25 E. S. 14
C. 24 F. BY L.S. 8785
INSTR. NO. 500231

CITY BRASS CAP
E. 1/4 CORNER SEC. 32
T. 2 N. R. 25 E. S. 14
C. 24 F. BY L.S. 8785
INSTR. NO. 500231

CITY BRASS CAP
E. 1/4 CORNER SEC. 32
T. 2 N. R. 25 E. S. 14
C. 24 F. BY L.S. 8785
INSTR. NO. 500231

CITY BRASS CAP
E. 1/4 CORNER SEC. 32
T. 2 N. R. 25 E. S. 14
C. 24 F. BY L.S. 8785
INSTR. NO. 500231



LOT 1 BLOCK 1
NSI BUSINESS PARK

PHASE I

LEGEND & NOTES

- 1/2" Steel Re-bar found with plastic caps stamped L.S.8785
- 5/8" Steel Re-bar found with plastic caps stamped L.S.8785
- 1/2" x 24" Steel Re-bar set with plastic caps stamped L.S.8785
- Utility easement widths are as noted
- LS Landscape
- Unit boundary lines

Each unit consists of the entire property enclosed by the Unit Boundary lines including the land and all improvements thereon, but subject to the covenants, conditions, and restrictions, and easements set forth in the Declaration of Covenants, Conditions and Restrictions of NSI Business Park.

Unit boundaries shown depict maximum building size allowed and not actual building configuration within the unit. The placement of buildings within each unit is governed by setback lines as required by the City of Idaho Falls, and the Declaration of Covenants, Conditions and Restrictions of NSI Business Park.

For District 7 Health Department approval, see the N.S.I. Business Park, Division No. 1 plat recorded August 18, 2000 under Instrument No. 1028274.

Phase II of this project consists of 2 units, allowing for 35 parking stalls.

UNIT 2-A

UNIT 2-B

UNIT 2-A