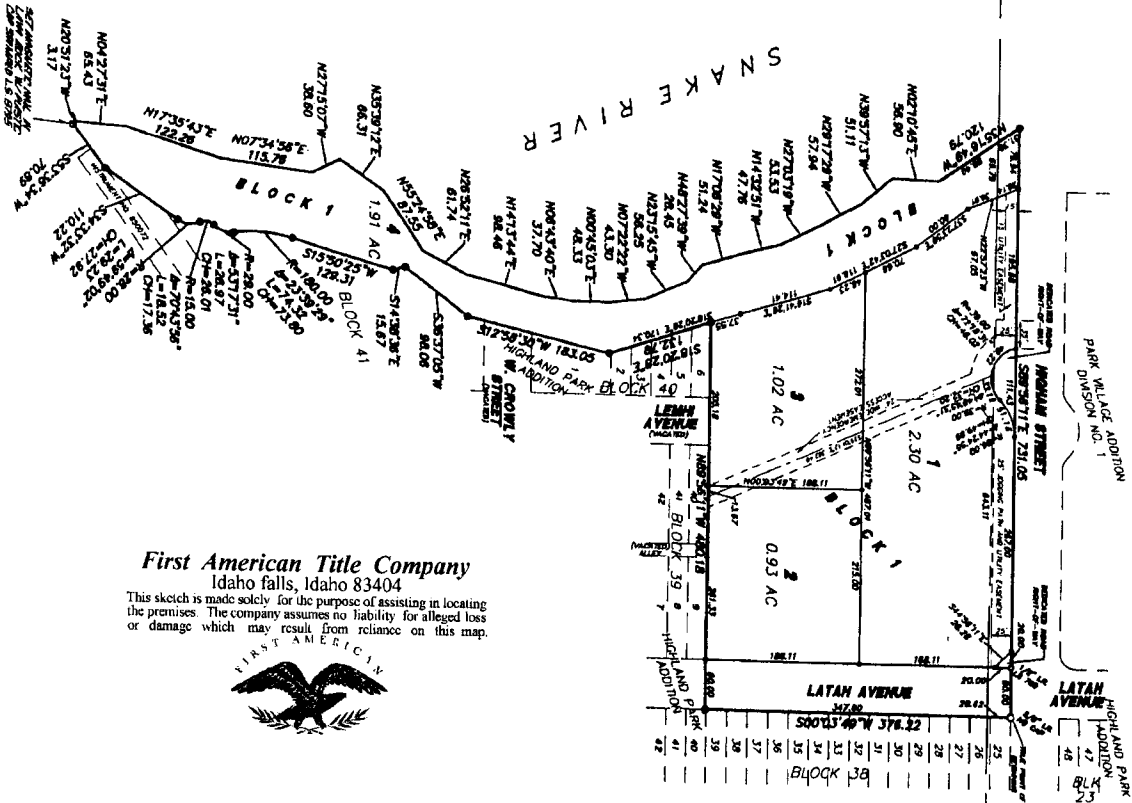


THE NARROWS

DIVISION NO. 1

AN ADDITION TO THE CITY OF IDAHO FALLS, BONNEVILLE COUNTY, IDAHO

BEING A REPLAT OF LOTS 10-39 AND PART OF LOTS 9 AND 40, BLOCK 39, LOTS 722 AND PART OF LOTS 18, BLOCK 40, PORTION OF BLOCK 41 AND PORTIONS OF VACATED LEMHI AND W. CROWLEY AVENUES AND VACATED ALLEYS, HIGHLAND PARK ADDITION, TO THE CITY OF IDAHO FALLS, BONNEVILLE COUNTY, IDAHO IN THE N.E. 1/4 OF SECTION 13 AND S.E. 1/4 OF SECTION 12 T.2N. R.37E. B.M.



First American Title Company
Idaho falls, Idaho 83404
This sketch is made solely for the purpose of assisting in locating the premises. The company assumes no liability for alleged loss or damage which may result from reliance on this map.



LEGEND & NOTES

- 5/8" x 30" Steel rebar set with plastic cap stamped L.S. 8795
 - 1/2" x 24" Steel rebar set with plastic cap stamped L.S. 8795
 - 5/8" x 30" Steel rebar found
 - 1/2" x 24" Steel rebar found with plastic cap stamped L.S. 780
- All utility easements are as shown

N. 1/4 COR. SECTION 13
C&W BY L.S. 873
NSTR. No. 507148

S. 1/4 COR. SECTION 12
C&W BY L.S. 872
NSTR. No. 507151

N.E. COR. SECTION 13
C&W BY L.S. 873
NSTR. No. 507148