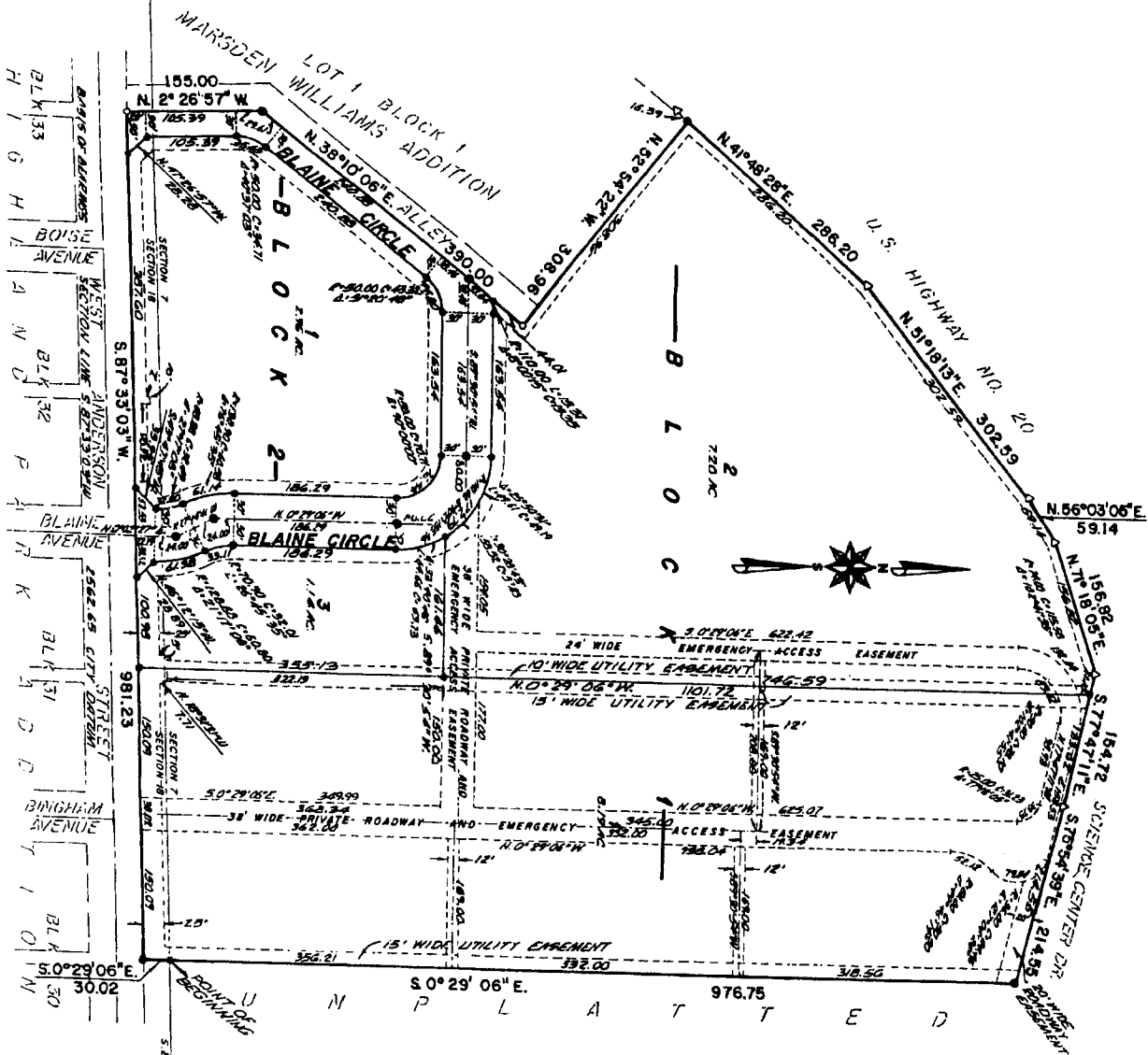


NAUVOO VILLAGE

Division No. 1

An Addition to the City of Idaho Falls, Bonneville County, Idaho

BEING PART OF THE S. 1/2 OF THE S.W. 1/4 OF SECTION 7 AND PART OF THE N. 1/2 OF THE N.W. 1/4 OF SECTION 18 T.2N. R.38 E.B.M.



LEGEND & NOTES

- 5/8" x 3/8" Steel rebar set with plastic cap stamped L.S. 8795
- 1/2" x 24" Steel rebar set with plastic cap stamped L.S. 8795
- 1/2" Steel rebar found with no caps
- △ Highway right-of-way markers found

First American Title Company
Idaho falls, Idaho 83404

This sketch is made solely for the purpose of assisting in locating the premises. The company assumes no liability for alleged loss or damage which may result from reliance on this map.

